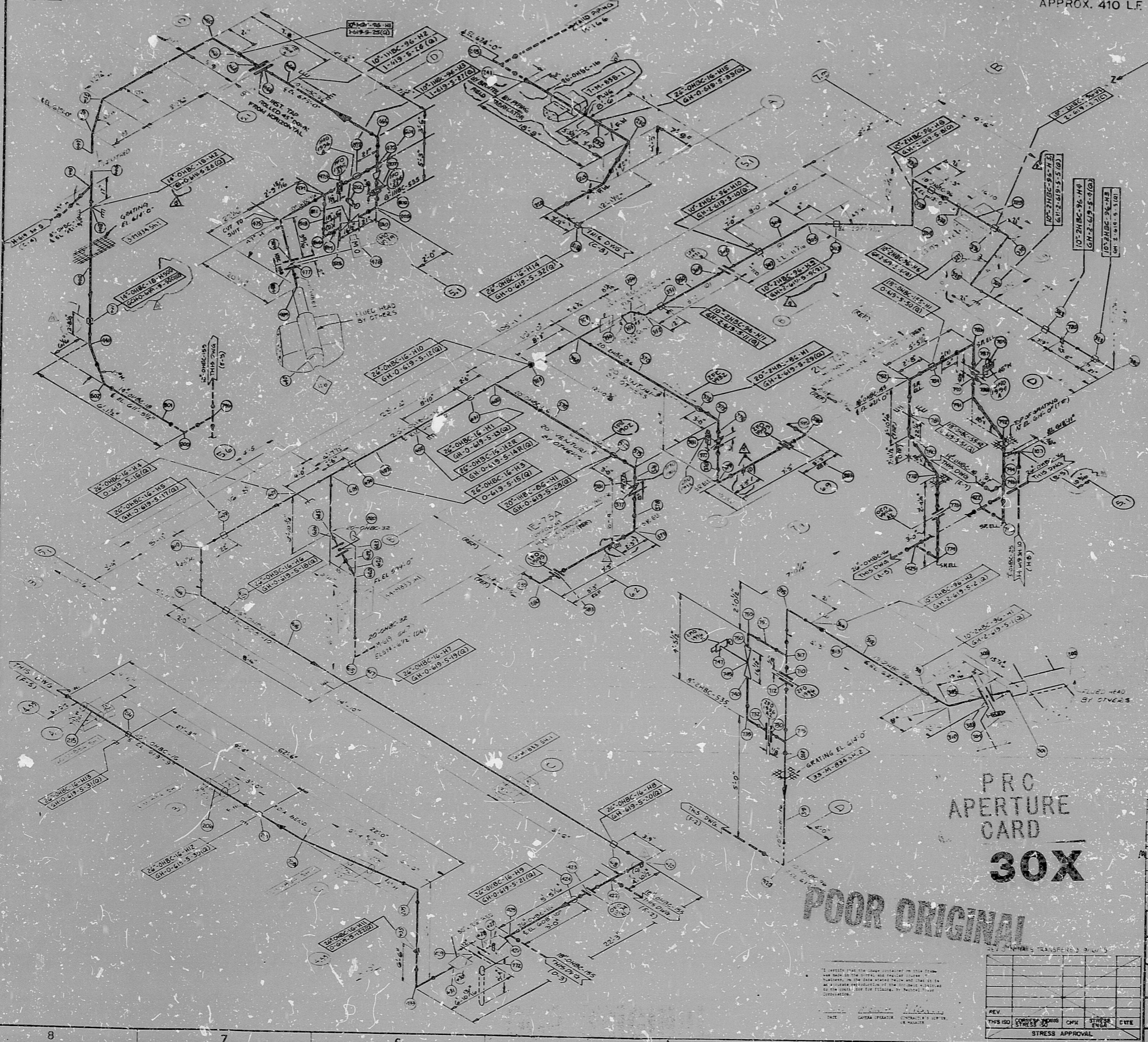


H 619 SH 5 (A)

APPROX. 410 LF

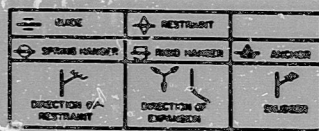


SYNOPSIS ANALYSIS DATA

DATE	
BY	
CHKD BY	
APP'D BY	
REVISED BY	
REVISED DATE	
REVISED REASON	

SYNOPSIS ANALYSIS DATA

DATE	
BY	
CHKD BY	
APP'D BY	
REVISED BY	
REVISED DATE	
REVISED REASON	



- NOTES:
1. ALL PIPE TO BE FABRICATED AND INSTALLED IN ACCORDANCE WITH SPECIFICATIONS OF SECTION 22.00, PART 22.00.00.
 2. FOR MATERIAL DESCRIPTION OF PIPE, VALVES AND FITTINGS, SEE PIPING CLASS SPECIFICATIONS, PART 22.00.
 3. FOR PIPE AND INSTRUMENT SYMBOLS SEE THE APPROPRIATE PIPING CLASS SPECIFICATIONS.
 4. FOR INSTRUMENT SYMBOLS SEE THE APPROPRIATE PIPING CLASS SPECIFICATIONS.
 5. FOR INSTRUMENT CONNECTION DETAILS SEE DRAWING 22-401.
 6. ALL INSTRUMENTS ARE TO BE INSTALLED IN ACCORDANCE WITH THE INSTRUMENT SYMBOLS AND CONNECTIONS SHOWN IN THIS DRAWING.
 7. FOR INSTRUMENT CONNECTION SYMBOLS SEE THE APPROPRIATE PIPING CLASS SPECIFICATIONS.
 8. FOR INSTRUMENT CONNECTION SYMBOLS SEE THE APPROPRIATE PIPING CLASS SPECIFICATIONS.
 9. FOR INSTRUMENT CONNECTION SYMBOLS SEE THE APPROPRIATE PIPING CLASS SPECIFICATIONS.
 10. FOR INSTRUMENT CONNECTION SYMBOLS SEE THE APPROPRIATE PIPING CLASS SPECIFICATIONS.
 11. FOR INSTRUMENT CONNECTION SYMBOLS SEE THE APPROPRIATE PIPING CLASS SPECIFICATIONS.
 12. FOR INSTRUMENT CONNECTION SYMBOLS SEE THE APPROPRIATE PIPING CLASS SPECIFICATIONS.
 13. ALL PIPE TO BE INSTALLED IN ACCORDANCE WITH THE INSTRUMENT SYMBOLS AND CONNECTIONS SHOWN IN THIS DRAWING.
 14. FOR INSTRUMENT CONNECTION SYMBOLS SEE THE APPROPRIATE PIPING CLASS SPECIFICATIONS.
 15. FOR INSTRUMENT CONNECTION SYMBOLS SEE THE APPROPRIATE PIPING CLASS SPECIFICATIONS.

PRO APERTURE CARD
30X

POOR ORIGINAL

REV	DATE	BY	CHKD BY	APP'D BY

BECHTEL
AN IRVING-CLOUD COMPANY

MIDLAND PLANT UNITS 1 & 2
CONSUMERS POWER COMPANY

HANGER ISOMETRIC
SERVICE WATER RETURN - SYSTEM A
UNIT 1 & 2

7220 H619 SH 5 (A) 8

17"
11"
8.5"
8.5"
11"
17"

17"
11"
8.5"
8.5"
11"
17"

RIDS

8302150293

