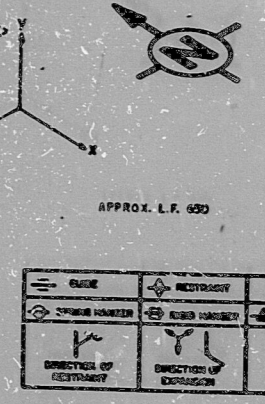
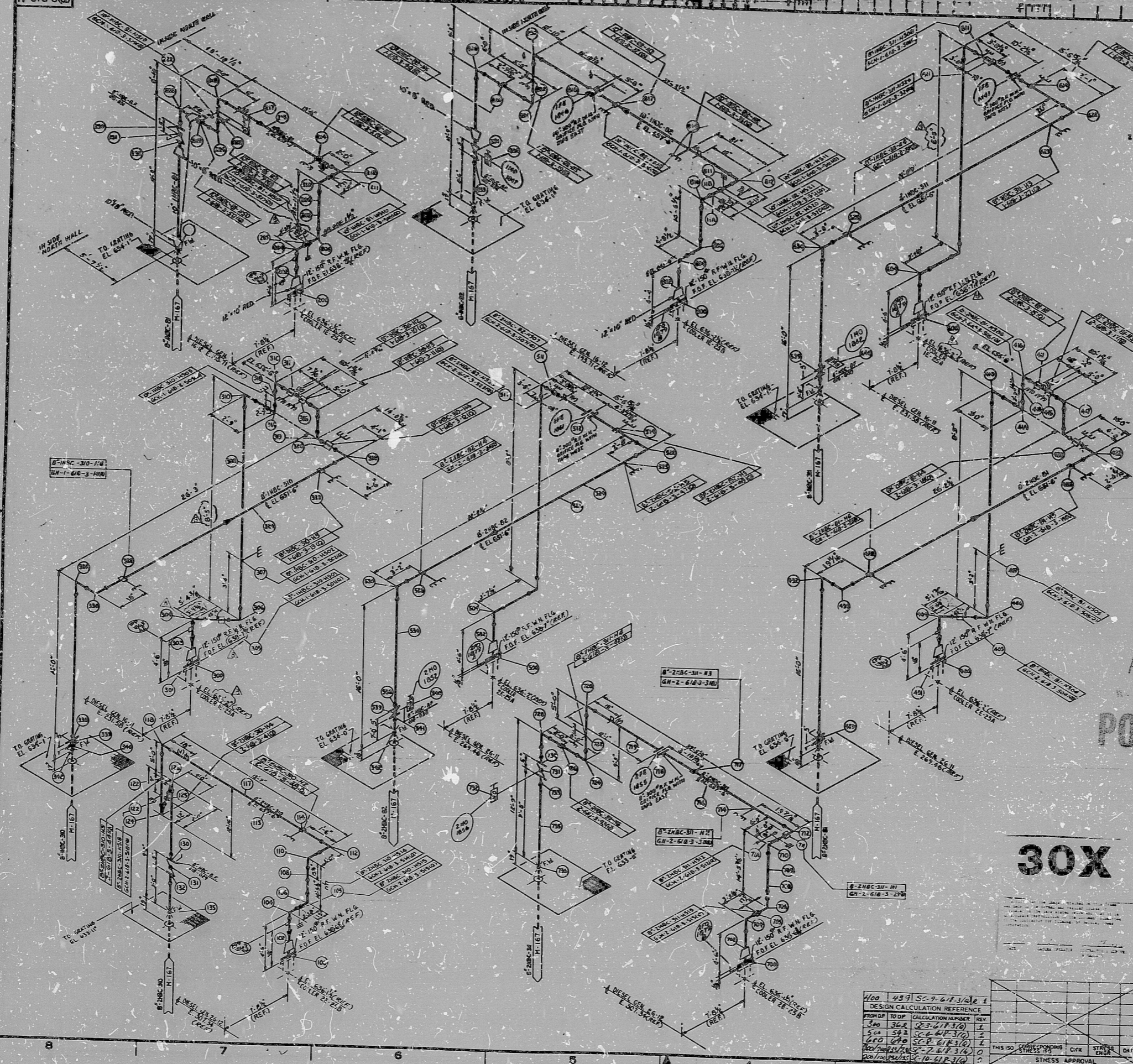


H-618-3(Q)



PRO APERTURE CARD  
POOR ORIGINAL

30X

REVISED TO REFLECT REV 3 OF H-618-3(Q) 10/20/60	REVISED TO REFLECT REV 4 OF H-618-3(Q) 10/20/60	REVISED TO REFLECT REV 5 OF H-618-3(Q) 10/20/60	REVISED TO REFLECT REV 6 OF H-618-3(Q) 10/20/60
REVISED TO REFLECT REV 7 OF H-618-3(Q) 10/20/60	REVISED TO REFLECT REV 8 OF H-618-3(Q) 10/20/60	REVISED TO REFLECT REV 9 OF H-618-3(Q) 10/20/60	REVISED TO REFLECT REV 10 OF H-618-3(Q) 10/20/60
REVISED TO REFLECT REV 11 OF H-618-3(Q) 10/20/60	REVISED TO REFLECT REV 12 OF H-618-3(Q) 10/20/60	REVISED TO REFLECT REV 13 OF H-618-3(Q) 10/20/60	REVISED TO REFLECT REV 14 OF H-618-3(Q) 10/20/60
REVISED TO REFLECT REV 15 OF H-618-3(Q) 10/20/60	REVISED TO REFLECT REV 16 OF H-618-3(Q) 10/20/60	REVISED TO REFLECT REV 17 OF H-618-3(Q) 10/20/60	REVISED TO REFLECT REV 18 OF H-618-3(Q) 10/20/60
REVISED TO REFLECT REV 19 OF H-618-3(Q) 10/20/60	REVISED TO REFLECT REV 20 OF H-618-3(Q) 10/20/60	REVISED TO REFLECT REV 21 OF H-618-3(Q) 10/20/60	REVISED TO REFLECT REV 22 OF H-618-3(Q) 10/20/60

<b>BECHTEL</b>	
MIDLAND PLANT UNITS 1 & 2	
COMMERCIAL POWER COMPANY	
HANGER ISOMETRIC	
SERVICE WATER SYSTEM	
DIESEL GEN BLDG HEATERS	
7220'	H-618-3 (Q)

4/00	4/03	SC-7-6/1-3/2/1
DESIGN CALCULATION REFERENCE		
PROLOG TOPIC CALCULATION REFERENCE		
3/60	3/62	SC-7-6/1-3/2/1
5/60	5/62	SC-7-6/1-3/2/1
10/60	10/62	SC-7-6/1-3/2/1
10/60	10/62	SC-7-6/1-3/2/1
10/60	10/62	SC-7-6/1-3/2/1
10/60	10/62	SC-7-6/1-3/2/1

DESIGNER	CHEK	STRESS	DATE
STRESS APPROVAL			

11

11

8.5

8.5

11

17

17

11

8.5

8.5

11

17

RIDS

8302150284

