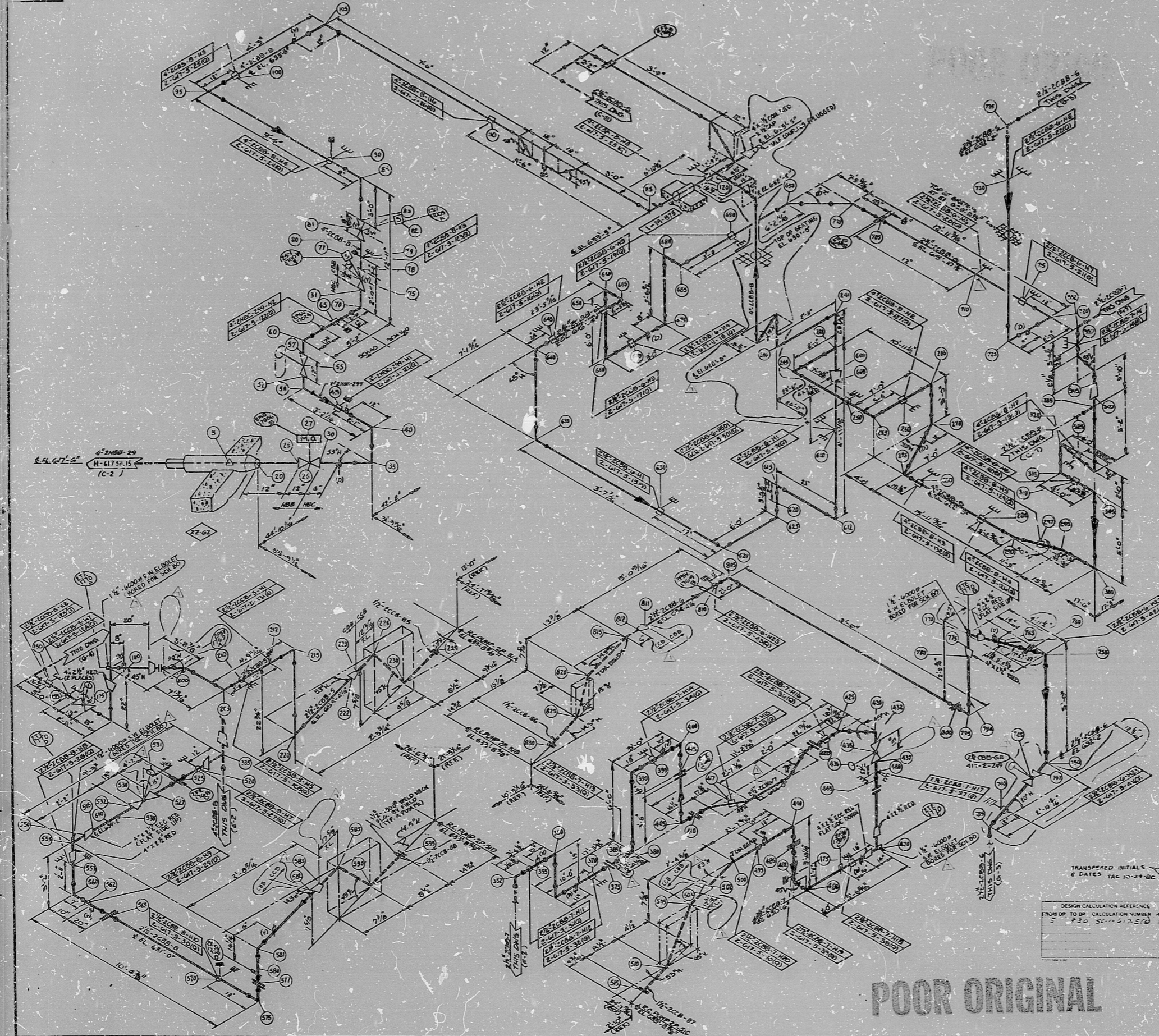


H-617 SH.5 (Q)



APPROX. LF 4-32

⊖	+
○	□
→	←
↘	↙

⊖ CURVE
 + RESTRAINT
 ○ SPRING NUMBER
 □ HANGER NUMBER
 → ANCHOR
 ↘ DIRECTION OF RESTRAINT
 ↙ DIRECTION OF EXPANSION
 ⚡ SHOCKED

- NOTES:
- ALL PIPING TO BE FABRICATED AND PICTURED IN ACCORDANCE WITH SPECIFICATIONS T-1290, H-500, S-250, D-200, E-200, L-500
 - FOR MATERIAL DESCRIPTION OF PIPE, VALVE AND FITTINGS, SEE PIPING CLASS SHEET H-1-11
 - FOR TYPICAL AND UNUSUAL SYMBOLS SEE H-1-11
 - FOR REDUCING SIZE SEE H-500
 - FOR UNUSUAL CONNECTIONS SEE H-500
 - FOR HANGER AND SUPPORT INFORMATION SEE H-1-11
 - FOR HANGER AND SUPPORT INFORMATION SEE H-1-11
 - FOR HANGER AND SUPPORT INFORMATION SEE H-1-11
 - FOR HANGER AND SUPPORT INFORMATION SEE H-1-11
 - FOR HANGER AND SUPPORT INFORMATION SEE H-1-11
 - FOR HANGER AND SUPPORT INFORMATION SEE H-1-11
 - FOR HANGER AND SUPPORT INFORMATION SEE H-1-11
 - FOR HANGER AND SUPPORT INFORMATION SEE H-1-11
 - FOR HANGER AND SUPPORT INFORMATION SEE H-1-11
 - FOR HANGER AND SUPPORT INFORMATION SEE H-1-11

PROC
APERTURE
CARD
30X

DESIGNATED BY	DATE	REVISION

DESIGN CALCULATION REFERENCE
FROM TOP OF CALCULATION NUMBER H-1
H-500, S-250, D-200, E-200, L-500

DESIGNER: J. H. ...
CHECKER: ...
DATE: ...

BECHTEL
485 2012 NICHOLS

MIDLAND PLANT UNITS 1 & 2
CONSUMERS POWER COMPANY
HANGER ISOMETRIC
COMPONENT COOLING WATER SYSTEM
(FOR RETURN HEADERS FROM R.C. PUMP SEALS)

7220 H-617 SH.5 (Q) 7

POOR ORIGINAL

11
8
11
8.5
11
17

11
8
11
8.5
11
17

RIDS

8302150262

