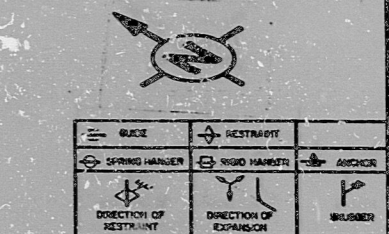
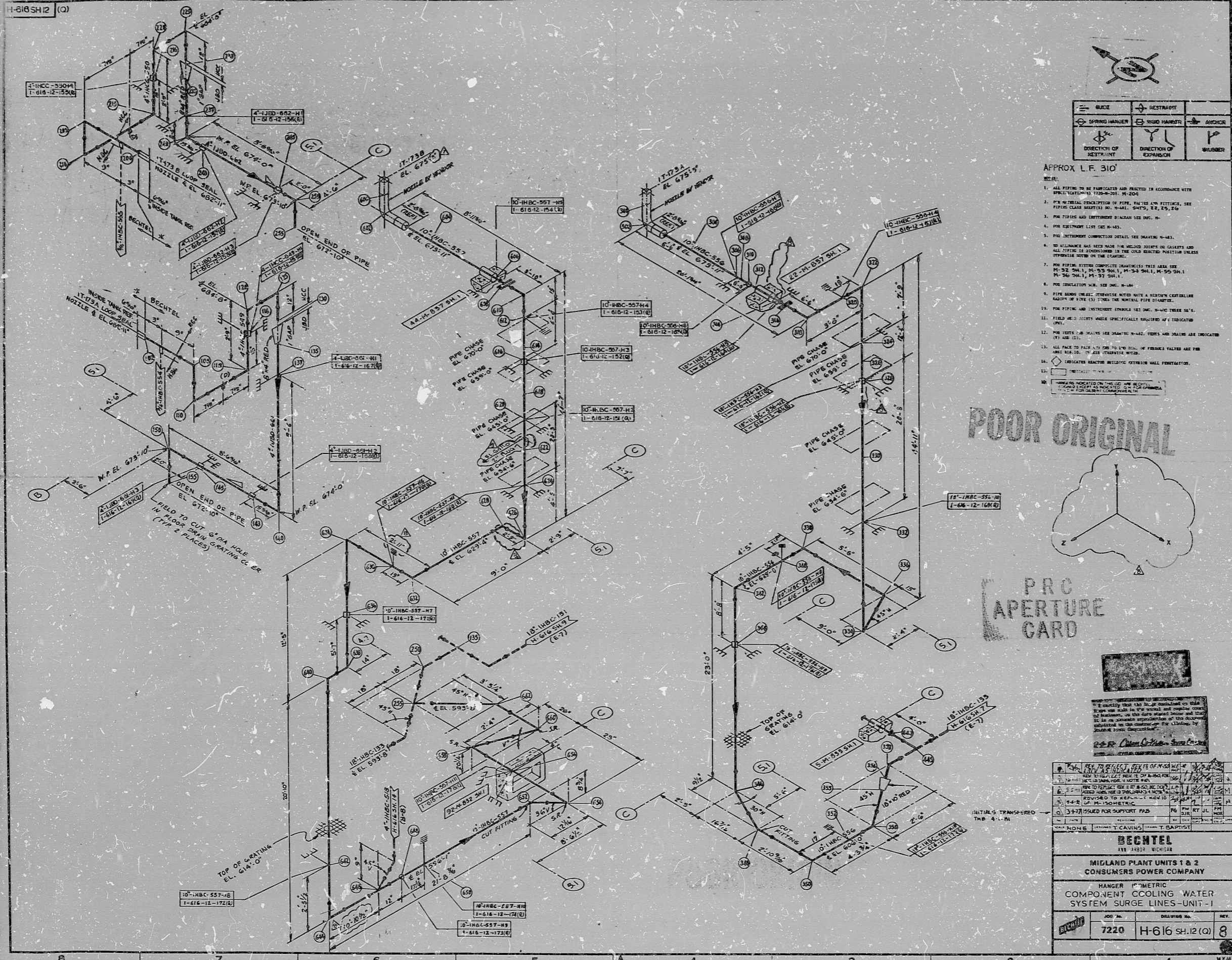
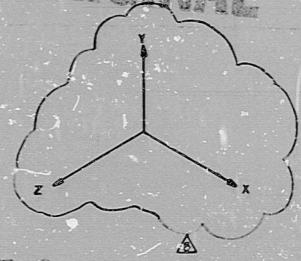


H-616 SH12 (C)



- APPROX. L.F. 310
1. ALL PIPING TO BE FABRICATED AND INSTALLED IN ACCORDANCE WITH SPECIFICATION 1220-8-201, M-204.
 2. PIPE MATERIAL DESCRIPTION OF PIPE, FITTINGS AND FLEXIBLES, SEE PIPING CLASSIFICATION NO. M-441, M-442, M-443, M-444, M-445, M-446.
 3. FOR PIPING AND INSTRUMENT SYMBOLS SEE SPEC. M-441.
 4. FOR INSTRUMENT CONNECTION DETAIL SEE DRAWING M-441.
 5. FOR WELDING SEE SPEC. M-441.
 6. FOR PIPING FITTING COMPLETE DRAWINGS THIS AREA SEE M-52, M-53, M-54, M-55, M-56, M-57, M-58, M-59, M-60, M-61, M-62, M-63, M-64, M-65, M-66, M-67, M-68, M-69, M-70, M-71, M-72, M-73, M-74, M-75, M-76, M-77, M-78, M-79, M-80, M-81, M-82, M-83, M-84, M-85, M-86, M-87, M-88, M-89, M-90, M-91, M-92, M-93, M-94, M-95, M-96, M-97, M-98, M-99, M-100.
 7. FOR PIPING AND INSTRUMENT SYMBOLS SEE SPEC. M-441, M-442, M-443, M-444, M-445, M-446.
 8. FOR PIPING AND INSTRUMENT SYMBOLS SEE SPEC. M-441, M-442, M-443, M-444, M-445, M-446.
 9. FOR PIPING AND INSTRUMENT SYMBOLS SEE SPEC. M-441, M-442, M-443, M-444, M-445, M-446.
 10. FOR PIPING AND INSTRUMENT SYMBOLS SEE SPEC. M-441, M-442, M-443, M-444, M-445, M-446.
 11. FOR PIPING AND INSTRUMENT SYMBOLS SEE SPEC. M-441, M-442, M-443, M-444, M-445, M-446.
 12. FOR PIPING AND INSTRUMENT SYMBOLS SEE SPEC. M-441, M-442, M-443, M-444, M-445, M-446.
 13. FOR PIPING AND INSTRUMENT SYMBOLS SEE SPEC. M-441, M-442, M-443, M-444, M-445, M-446.
 14. FOR PIPING AND INSTRUMENT SYMBOLS SEE SPEC. M-441, M-442, M-443, M-444, M-445, M-446.
 15. FOR PIPING AND INSTRUMENT SYMBOLS SEE SPEC. M-441, M-442, M-443, M-444, M-445, M-446.
 16. FOR PIPING AND INSTRUMENT SYMBOLS SEE SPEC. M-441, M-442, M-443, M-444, M-445, M-446.
 17. FOR PIPING AND INSTRUMENT SYMBOLS SEE SPEC. M-441, M-442, M-443, M-444, M-445, M-446.
 18. FOR PIPING AND INSTRUMENT SYMBOLS SEE SPEC. M-441, M-442, M-443, M-444, M-445, M-446.
 19. FOR PIPING AND INSTRUMENT SYMBOLS SEE SPEC. M-441, M-442, M-443, M-444, M-445, M-446.
 20. FOR PIPING AND INSTRUMENT SYMBOLS SEE SPEC. M-441, M-442, M-443, M-444, M-445, M-446.

POOR ORIGINAL



PRC APERTURE CARD

BECHTEL
178 ARBOR VILLE, MISSOURI

DATE: 11/15/66

BY: T. CAVINS

CHECKED: T. CAVINS

APPROVED: T. CAVINS

| | | | |
|----|------|----------------|---|
| 7 | 7220 | H-616 SH12 (C) | 8 |
| 8 | | | |
| 9 | | | |
| 10 | | | |
| 11 | | | |
| 12 | | | |
| 13 | | | |
| 14 | | | |
| 15 | | | |
| 16 | | | |
| 17 | | | |
| 18 | | | |
| 19 | | | |
| 20 | | | |

| | | | |
|--|----------------|---------------------------|--|
| BECHTEL | | MIGLAND PLANT UNITS 1 & 2 | |
| 178 ARBOR VILLE, MISSOURI | | CONSUMERS POWER COMPANY | |
| HANGER ISOMETRIC COMPONENT COOLING WATER SYSTEM SURGE LINES-UNIT-1 | | | |
| 7220 | H-616 SH12 (C) | 8 | |

RIDS

8302150253

