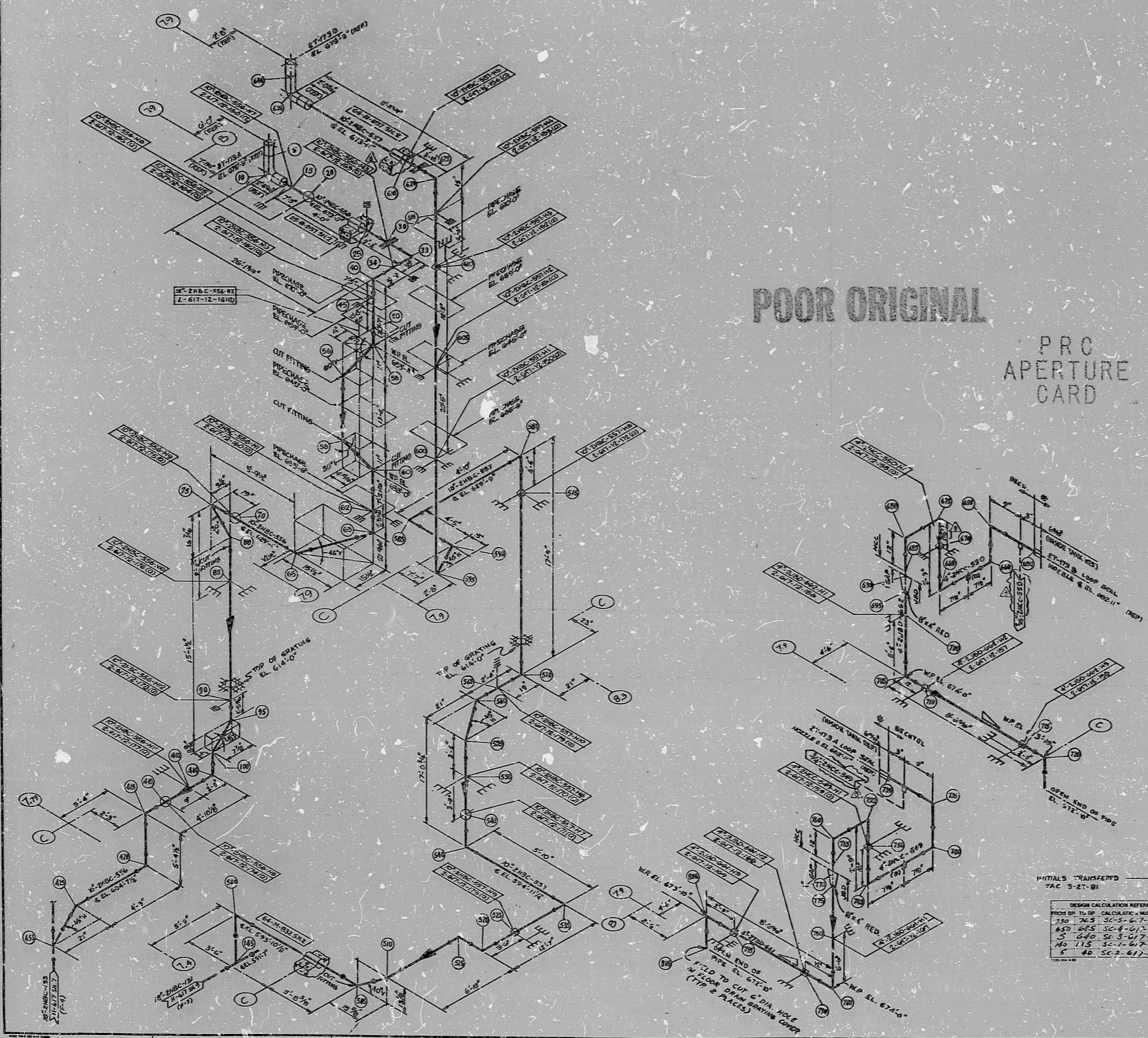


H-617 SH12 (O)



POOR ORIGINAL

PRO APERTURE CARD



APPROX. I.F. = 322

- NOTES:
- ALL PIPING TO BE FABRICATED AND INSTALLED IN ACCORDANCE WITH SPECIFICATIONS 2200-100-100-100.
 - FOR MATERIAL SPECIFICATIONS, FITTINGS, VALVES AND FITTINGS, SEE ITEM 2200-100-100-100-100-100.
 - FOR PIPING AND EQUIPMENT STANDARDS, SEE 2200-100-100-100-100-100.
 - FOR TOLERANCES, SEE 2200-100-100-100-100-100.
 - FOR WELDING CONNECTIONS, SEE 2200-100-100-100-100-100.
 - FOR ALL OTHERS, SEE 2200-100-100-100-100-100.
 - FOR PIPING SYSTEMS, SEE 2200-100-100-100-100-100.
 - FOR INSULATION, SEE 2200-100-100-100-100-100.
 - FOR WELDING, SEE 2200-100-100-100-100-100.
 - FOR PIPING AND EQUIPMENT, SEE 2200-100-100-100-100-100.
 - FIELD FIELD NOTES, SPECIFICALLY REFERRED TO IN THIS DRAWING.
 - FOR FIELD AND SHOP, SEE 2200-100-100-100-100-100.
 - ALL PIPING TO BE INSTALLED IN ACCORDANCE WITH THE ABOVE NOTES.
 - INDICATED SIZES REFERRED TO IN THIS DRAWING.
 - INDICATED SIZES REFERRED TO IN THIS DRAWING.

30X

CERTIFICATE OF MICROFILMING

I certify that the image produced on this film was made in the original and correct copy of the drawing, on the date stated below and that it is an accurate reproduction of the document submitted to the contractor for filing, by the contractor.

DATE: 3-27-91

BY: [Signature]

TITLE: [Title]

NO.	DESCRIPTION	DATE	BY	CHKD.
1	REVISED TO REFLECT...			
2	REVISED TO REFLECT...			
3	REVISED TO REFLECT...			
4	REVISED TO REFLECT...			
5	REVISED TO REFLECT...			
6	REVISED TO REFLECT...			
7	REVISED TO REFLECT...			
8	REVISED TO REFLECT...			
9	REVISED TO REFLECT...			
10	REVISED TO REFLECT...			

DESIGN CALCULATION REFERENCE

FROM OR TO OF CALCULATION - NUMBER REV

230 265 300-6-7-1200 I

230 265 300-6-7-1200 I

230 265 300-6-7-1200 I

230 265 300-6-7-1200 I

230 265 300-6-7-1200 I

RECHTEL

1300 AVENUE BICHSEL

GRANDLAND PLANT UNITS 1 & 2

CONSUMERS POWER COMPANY

HANGER ISOM, TIC

COMPONENT COOLING WATER

SYSTEM SURGE LINES-UNIT #2

7220 H-617 SH.12 (O) B

17"

11"

8.5"

8.5"

11"

17"

17"

11"

8.5"

8.5"

11"

17"

RIDS;

8302150246

