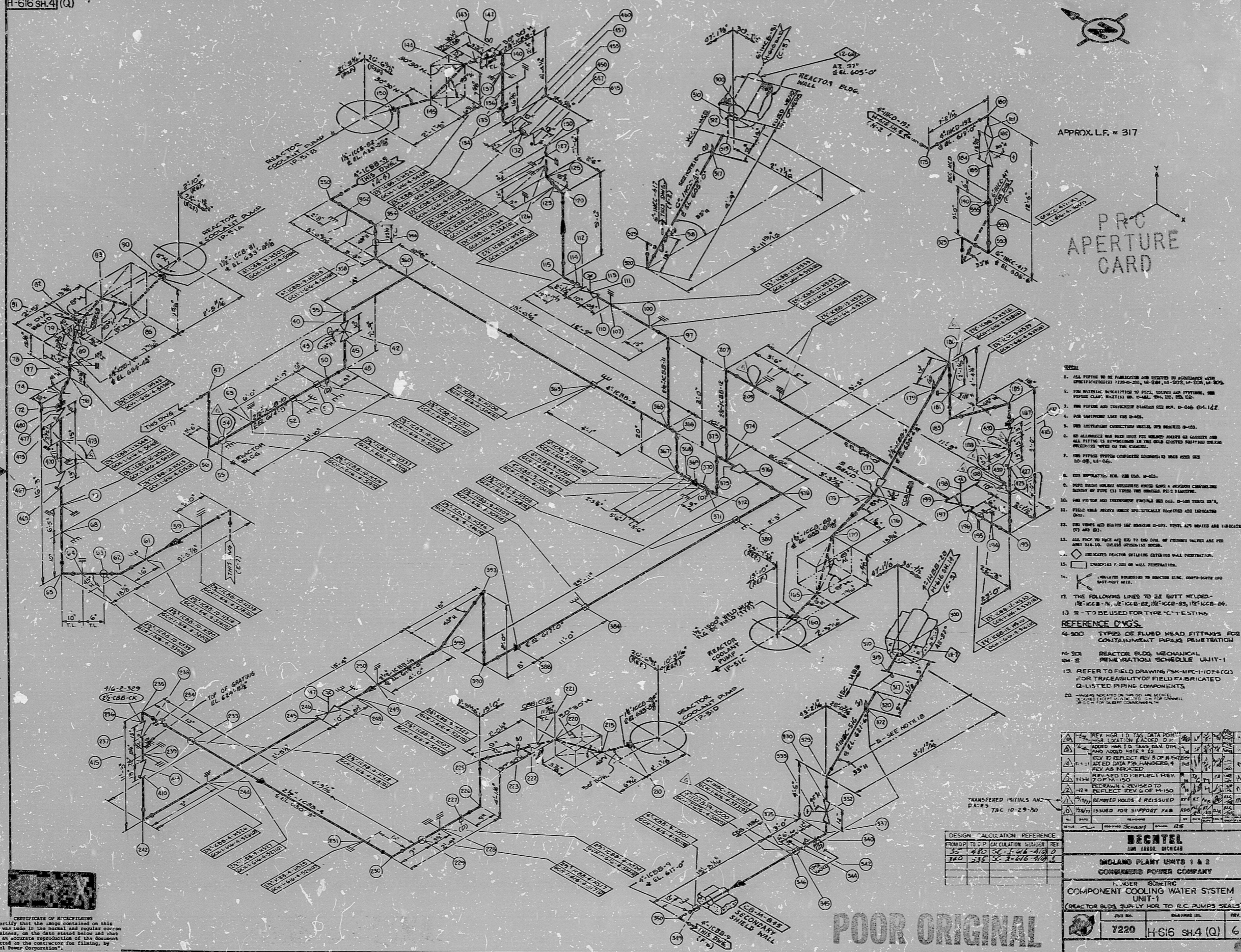


H-616 SH.4 (Q)



- NOTES:
1. ALL FITTINGS TO BE FABRICATED AND RECEIVED BY APPROVED CODE SPECIFICATIONS (ASME SECTION VIII, DIVISION 1, OR SECTION IX).
 2. FOR MATERIAL SPECIFICATIONS TO PIPES, VALVES AND FITTINGS, SEE PIPING SPECIFICATIONS, P. 2-4-2, 2-4-3, 2-4-4, 2-4-5.
 3. FOR PIPING AND FITTINGS DIMENSIONS, SEE SPEC. 2-4-2, 2-4-3, 2-4-4, 2-4-5.
 4. FOR DIMENSIONS, SEE 2-4-2, 2-4-3, 2-4-4, 2-4-5.
 5. FOR DIMENSIONS, SEE 2-4-2, 2-4-3, 2-4-4, 2-4-5.
 6. ALL DIMENSIONS UNLESS OTHERWISE SPECIFIED ARE IN INCHES AND ALL FITTINGS TO BE FABRICATED IN THE FIELD SHALL BE TO THE DIMENSIONS SPECIFIED ON THE DRAWING.
 7. FOR PIPING SYSTEMS, SEE 2-4-2, 2-4-3, 2-4-4, 2-4-5.
 8. FOR DIMENSIONS, SEE 2-4-2, 2-4-3, 2-4-4, 2-4-5.
 9. FOR DIMENSIONS, SEE 2-4-2, 2-4-3, 2-4-4, 2-4-5.
 10. FOR DIMENSIONS, SEE 2-4-2, 2-4-3, 2-4-4, 2-4-5.
 11. FOR DIMENSIONS, SEE 2-4-2, 2-4-3, 2-4-4, 2-4-5.
 12. FOR DIMENSIONS, SEE 2-4-2, 2-4-3, 2-4-4, 2-4-5.
 13. FOR DIMENSIONS, SEE 2-4-2, 2-4-3, 2-4-4, 2-4-5.
 14. FOR DIMENSIONS, SEE 2-4-2, 2-4-3, 2-4-4, 2-4-5.
 15. FOR DIMENSIONS, SEE 2-4-2, 2-4-3, 2-4-4, 2-4-5.
 16. FOR DIMENSIONS, SEE 2-4-2, 2-4-3, 2-4-4, 2-4-5.
 17. FOR DIMENSIONS, SEE 2-4-2, 2-4-3, 2-4-4, 2-4-5.
 18. FOR DIMENSIONS, SEE 2-4-2, 2-4-3, 2-4-4, 2-4-5.
 19. FOR DIMENSIONS, SEE 2-4-2, 2-4-3, 2-4-4, 2-4-5.
 20. FOR DIMENSIONS, SEE 2-4-2, 2-4-3, 2-4-4, 2-4-5.
- REFERENCE PAGES:
1. 2-4-2, 2-4-3, 2-4-4, 2-4-5
 2. 2-4-2, 2-4-3, 2-4-4, 2-4-5
 3. 2-4-2, 2-4-3, 2-4-4, 2-4-5
 4. 2-4-2, 2-4-3, 2-4-4, 2-4-5
 5. 2-4-2, 2-4-3, 2-4-4, 2-4-5
 6. 2-4-2, 2-4-3, 2-4-4, 2-4-5
 7. 2-4-2, 2-4-3, 2-4-4, 2-4-5
 8. 2-4-2, 2-4-3, 2-4-4, 2-4-5
 9. 2-4-2, 2-4-3, 2-4-4, 2-4-5
 10. 2-4-2, 2-4-3, 2-4-4, 2-4-5
 11. 2-4-2, 2-4-3, 2-4-4, 2-4-5
 12. 2-4-2, 2-4-3, 2-4-4, 2-4-5
 13. 2-4-2, 2-4-3, 2-4-4, 2-4-5
 14. 2-4-2, 2-4-3, 2-4-4, 2-4-5
 15. 2-4-2, 2-4-3, 2-4-4, 2-4-5
 16. 2-4-2, 2-4-3, 2-4-4, 2-4-5
 17. 2-4-2, 2-4-3, 2-4-4, 2-4-5
 18. 2-4-2, 2-4-3, 2-4-4, 2-4-5
 19. 2-4-2, 2-4-3, 2-4-4, 2-4-5
 20. 2-4-2, 2-4-3, 2-4-4, 2-4-5

DESIGN CALCULATION REFERENCE

FROM DP TO CP CALCULATION SHEET REF

1-5-57 2-4-2 2-4-3 2-4-4 2-4-5

3-2-57 2-4-2 2-4-3 2-4-4 2-4-5

4-2-57 2-4-2 2-4-3 2-4-4 2-4-5

| REACTOR | |
|---------------------------------------------------|----------------|
| INDIAN POINT PLANT 1 & 2 | |
| GENERAL POWER COMPANY | |
| REACTOR BUILDING SUPPLY WATER SYSTEM | |
| UNIT 1 | |
| REACTOR BUILDING SUPPLY WATER TO R.C. PUMPS SEALS | |
| 7220 | H-616 SH.4 (Q) |
| | 6 |

POOR ORIGINAL

I certify that the image contained on this slide was taken in the correct and proper course of business, on the date stated below and that it is an accurate reproduction of the document submitted to the contractor for filing, by the General Power Corporation.

John L. Lorton, Sr. Contract Administrator

8.5" 11" 17" 8.5" 11" 17"

RIDS

8302150233

