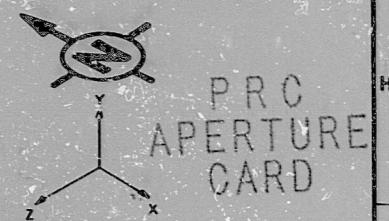
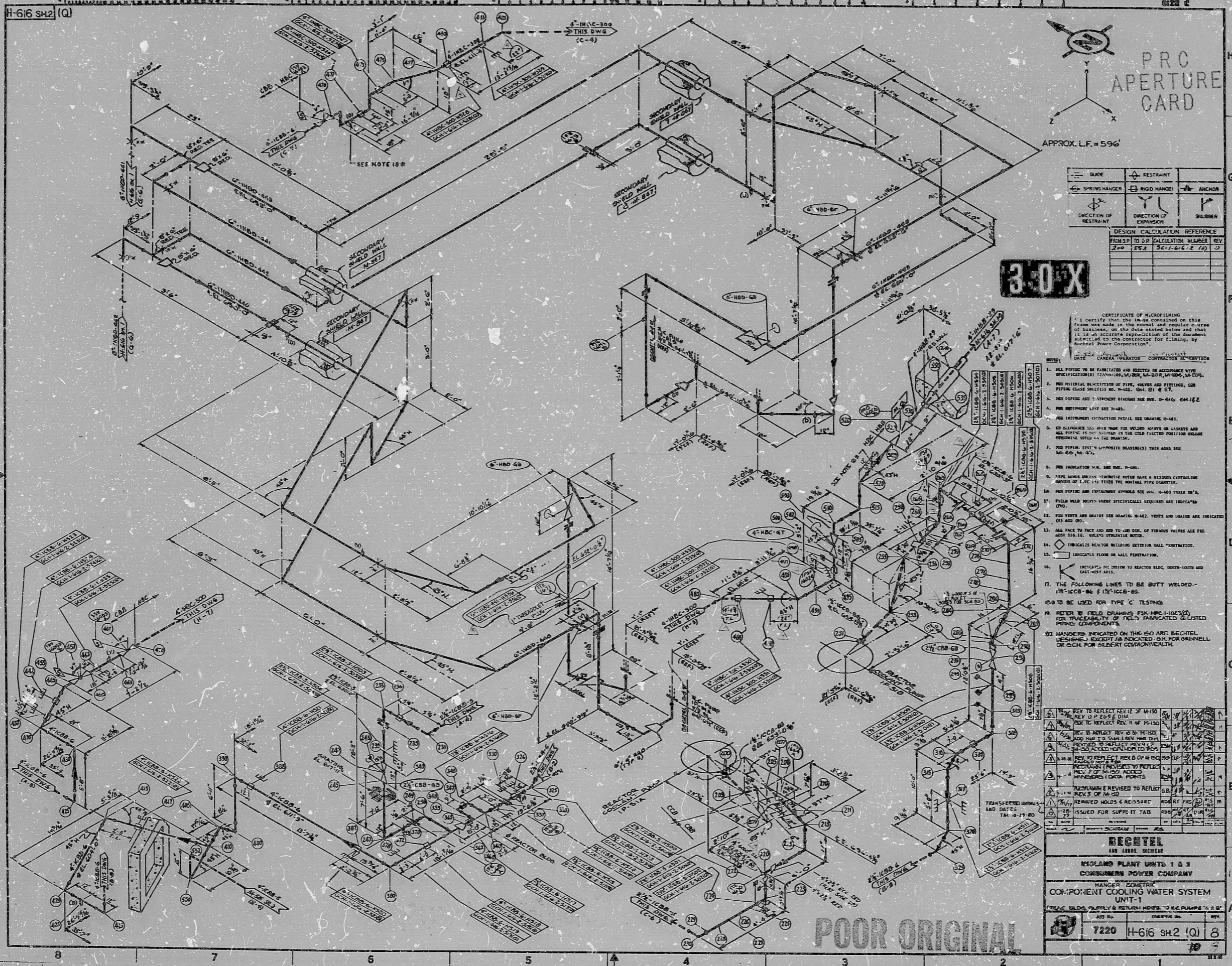


H-616 SH2 (Q)



APPROX. L.F. = 596'

GUIDE	RESTRAINT	ANCHOR
SPRING HANGER	RIGID HANGER	SLABBER
DIRECTION OF RESTRAINT	DIRECTION OF EXPANSION	

DESIGN	CALCULATION	REFERENCE
200	202	50-1-61-2 (1)

3-0 X

CERTIFICATE OF MICROFILMING  
 I certify that the image contained on this frame was made in the normal and regular course of business, on the date stated below and that it is an accurate reproduction of the document submitted to the contractor for filming, by Bechtel Power Corporation.

DATE: 10/15/68  
 CAMERA OPERATOR: CONTRACTOR SUPERVISOR

1. ALL PIPING TO BE FABRICATED AND INSTALLED IN ACCORDANCE WITH SPECIFICATIONS: 72-NH-209, 64-209, 64-209, 64-209, 64-209.
2. FOR MATERIAL SPECIFICATION OF PIPE, VALVES AND FITTINGS, SEE PIPING CLASS SPECIFICATION, 64-209, 64-209, 64-209.
3. FOR PIPING AND INSTRUMENT SYMBOLS SEE SPEC. 64-646, 64-646.
4. FOR INSTRUMENT LIST SEE 64-483.
5. FOR INSTRUMENT CONNECTIONS SEE DRAWING 64-483.
6. ALL ALLOWABLE TOLERANCES FOR WELDED JOINTS OR ASSETS AND ALL FITTINGS TO BE INSTALLED IN THE CORRECT POSITION UNLESS OTHERWISE NOTED ON THE DRAWINGS.
7. FOR PIPING SYSTEMS COMPATIBLE DRAWINGS THIS AREA SEE 64-646, 64-646.
8. FOR INSULATION V.L. SEE SPEC. 64-480.
9. PIPE HANGERS SHALL BE INSTALLED WITH A HANGER CONTROLLING HANGER OF 1/2" TO 1" TIMES THE NOMINAL PIPE DIAMETER.
10. FOR PIPING AND INSTRUMENT SYMBOLS SEE SPEC. 64-646, 64-646.
11. FIELD WELD DETAILS WHERE SPECIFICALLY REQUIRED ARE INDICATED ON THE DRAWINGS.
12. FOR VENTS AND DRAINS SEE DRAWING 64-483. VENTS AND DRAINS ARE INDICATED ON THE DRAWINGS.
13. ALL FACE TO FACE AND END TO END DIM. OF FURNISH VALVES ARE PER 64-483. UNLESS OTHERWISE NOTED.
14. DIMENSIONAL SECTION BUILDING EXTERIOR WALL PENETRATION.
15. DIMENSIONAL SECTION BUILDING EXTERIOR WALL PENETRATION.
16. INDICATES BY DASH TO REACTOR BLDG. NORTH-SOUTH AND EAST-WEST AXIS.
17. THE FOLLOWING LINES TO BE BUTT WELDED - 1/2" ICCB-86 & 1/2" ICCB-86.
18. TO BE USED FOR TYPE 'C' TESTING.
19. REFER TO FIELD DRAWINGS FOR M.P.C. HANGERS (S) FOR TRACEABILITY OF FIELD FABRICATED & LISTED HANGERS COMPONENTS.
20. HANGERS INDICATED ON THIS ISO ARE BECTHEL DESIGNED EXCEPT AS INDICATED FOR ORINELL OR B.C.H. FOR SELECTED COMPONENTS.

REV	BY	DATE	DESCRIPTION
1	...	...	...
2	...	...	...
3	...	...	...
4	...	...	...
5	...	...	...
6	...	...	...
7	...	...	...
8	...	...	...
9	...	...	...
10	...	...	...
11	...	...	...
12	...	...	...
13	...	...	...
14	...	...	...
15	...	...	...
16	...	...	...
17	...	...	...
18	...	...	...
19	...	...	...
20	...	...	...

**BECTHEL**  
 480 18002, BECTHEL

MIDLAND PLANT UNITS 1 & 2  
 CONSUMERS POWER COMPANY

HANGER ISOMETRIC  
 COMPONENT COOLING WATER SYSTEM  
 UNIT-1  
 (REACTOR BLDG. SUPPLY & RETURN HOSES TO REC. PUMPS) 6.8"

7220 H-616 SH2 (Q) 8

POOR ORIGINAL

17  
 11  
 8.5  
 8.5  
 11  
 17

17  
 11  
 8.5  
 8.5  
 11  
 17

RIDS

8302150224

