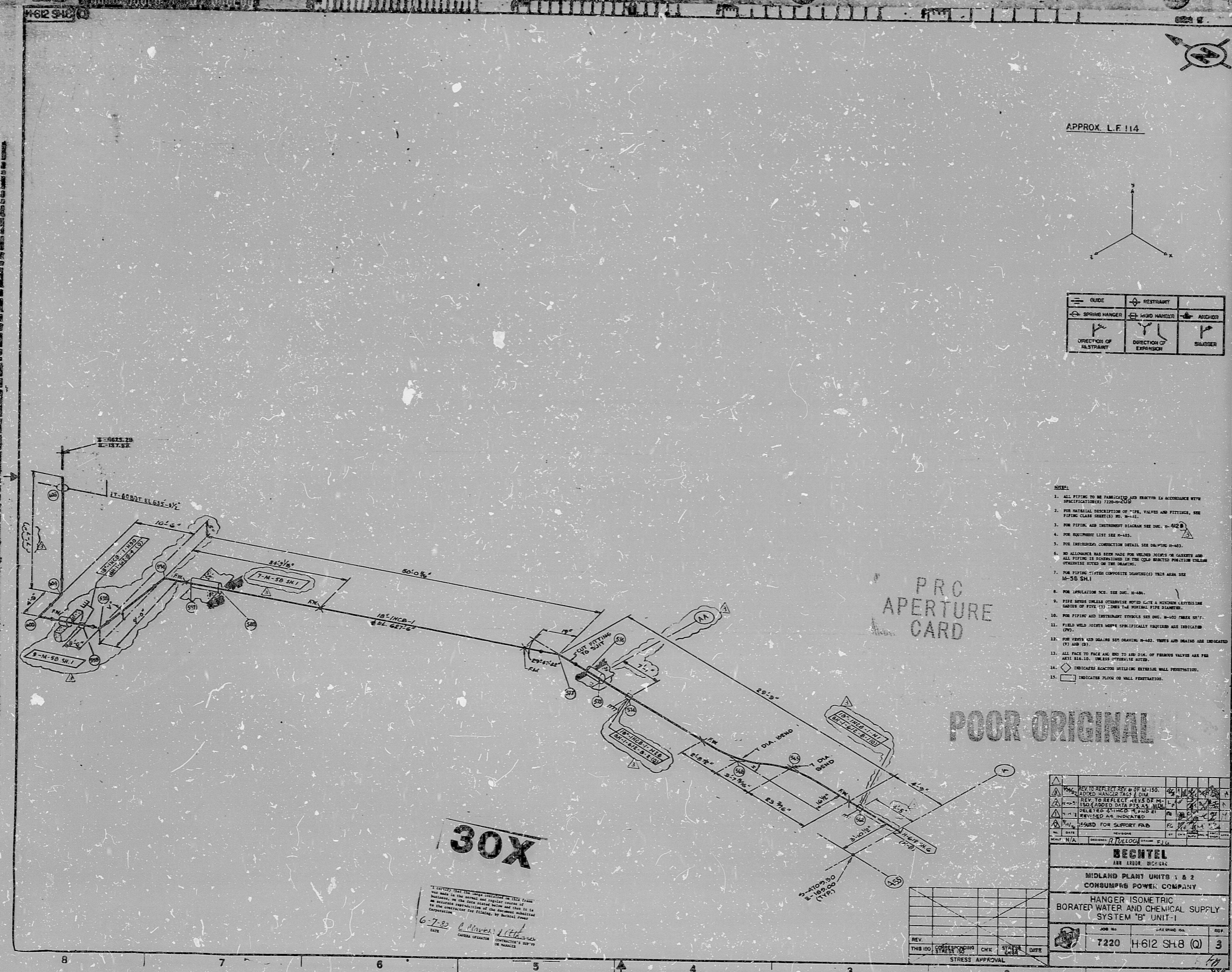


17"
11"
8.5"
8.5"
11"
17"

17"
11"
8.5"
8.5"
11"
17"



APPROX. L.F. 114

GUIDE	RESTRAINT
SPRING HANGER	HARD HANGER
ANCHOR	
DIRECTION OF RESTRAINT	DIRECTION OF EXPANSION
SLASHER	

- NOTES:
1. ALL PIPING TO BE FABRICATED AND ERRECTED IN ACCORDANCE WITH SPECIFICATIONS 1200-20-15.
 2. FOR MATERIAL DESCRIPTION OF PIPE, VALVES AND FITTINGS, SEE PIPING CLASS SHEET(S) NO. H-11.
 3. FOR PIPING AND INSTRUMENT DIAGRAM SEE DOC. H-412.
 4. FOR EQUIPMENT LIST SEE H-43.
 5. FOR INSTRUMENT CONNECTION DETAIL SEE DRAWING H-45.
 6. NO ALLOWANCE HAS BEEN MADE FOR WELDED JOINTS OR GASKETS AND ALL PIPING IS DIMENSIONED BY THE UNLAWYERED POSITION UNLESS OTHERWISE NOTED ON THE DRAWING.
 7. FOR PIPING SYSTEM COMPOSITE DRAWING(S) THIS AREA SEE H-50 SH-1.
 8. FOR INSULATION SEE DOC. H-44.
 9. PIPE SPREAD SHEETS OTHERWISE NOTED CARRY A HANGER CATEGORY NUMBER OF FIVE (5) TIMES THE NORMAL FOR DIMENSIONS.
 10. FOR PIPING AND INSTRUMENT SYMBOLS SEE DOC. H-40 THREE SETS.
 11. FIELD WELD JOINTS WERE SPECIFICALLY IDENTIFIED AND INDICATED (PW).
 12. FOR WELDS AND BEARING SEE DRAWING H-42. TYPES AND DEATHS ARE INDICATED (T) AND (D).
 13. ALL FACE TO FACE AND END TO END DIA. OF FLEXIBLE VALVES ARE PER ANSI B16-10. UNLESS OTHERWISE NOTED.
 14. INDICATES REACTOR SHIELDING EXTENSION WALL PENETRATION.
 15. INDICATES FLOOR OR WALL PENETRATION.

PRO APERTURE CARD

POOR ORIGINAL

30X

I CERTIFY THAT THE DATA CONTAINED ON THIS DRAWING WAS OBTAINED FROM THE FIELD AND IS ACCURATE AND COMPLETE AS FAR AS THE INFORMATION AVAILABLE TO ME AT THE TIME OF THE FIELD SURVEY IS CONCERNED. I AM A REGISTERED PROFESSIONAL ENGINEER AND HOLD A LICENSE IN THE STATE OF CALIFORNIA. I AM THE CONTRACTOR FOR THE DESIGN OF THIS PROJECT BY BECHTEL CORPORATION.

6-7-83
DATE
C. M. M...
CONTRACTOR'S SUP'Y
IN CHARGE

REV.	DATE	BY	CHKD.	DATE	STRESS APPROVAL

<p>REVISIONS:</p> <p>REV. 1: REVISED TO REFLECT REV. OF M-150 DIV. TO REFLECT REV. OF M-150 (ADDED DATA PITS AS SHOWN ON M-150 DIVISION DRAWING) AT REVISION AS INDICATED.</p> <p>REV. 2: REVISION FOR SUPPORT PAD.</p>	<p>DATE: 6-7-83</p> <p>BY: C. M. M...</p> <p>CHKD.: [Signature]</p> <p>DATE: [Blank]</p>
<p>BECHTEL AN ARBOR, CALIF. CO.</p> <p>MIDLAND PLANT UNITS 1 & 2 CONSUMERS POWER COMPANY</p> <p>HANGER ISOMETRIC BORATED WATER AND CHEMICAL SUPPLY SYSTEM "B" UNIT-1</p> <p>JOB NO. 7220 H612 SH-8 (Q) 3</p> <p>DATE: 6-7-83</p>	

RIDS

8302150199

