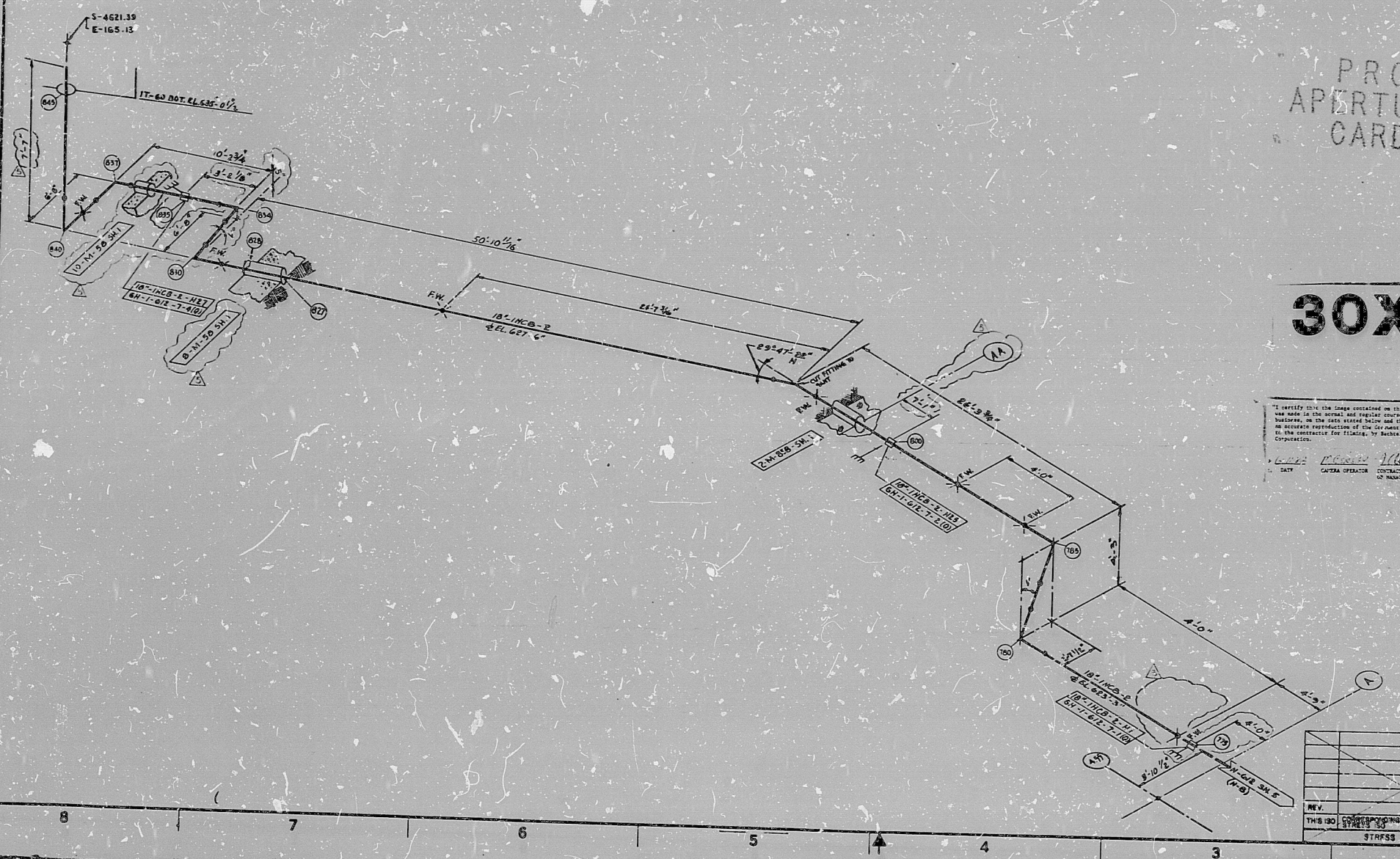


17"
11"
8.5"
8.5"
11"
17"

H-612 SH7(Q)

This drawing and the sample it covers are the property of BECHTEL. They are loaned to you for your use only and should not be reproduced, copied, loaned, exhibited or used in any way without express permission from BECHTEL.



PRC
APERTURE
CARD

30X

APPROX. L.F. 110

- NOTES:
1. ALL PIPING TO BE FABRICATED AND TRACED IN ACCORDANCE WITH SPECIFICATIONS 7220-M-200.
 2. FOR MATERIAL DESCRIPTION OF P.P.E. VALVES AND FITTINGS, SEE PIPING PLANT SPECIFICATIONS NO. 7-4-61.
 3. FOR PIPING AND INSTRUMENT DIAGRAM SIZE DIM. 9-412B.
 4. FOR EQUIPMENT LIST SEE W-443.
 5. FOR INSTRUMENT CONNECTION DETAIL SEE DRAWING W-431.
 6. NO ALLOWANCE HAS BEEN MADE FOR WELDED JOINTS OR GASKETS AND ALL PIPING IS DIMENSIONED TO THE COLD EXHAUST POINT UNLESS OTHERWISE NOTED ON THE DRAWING.
 7. FOR PIPING SYSTEM COMPILIT DRAWING(S) THIS AREA SEE M-50 SH. 1.
 8. FOR INSULATION SCR. SEE DIM. W-434.
 9. PIPE BENDS UNLESS OTHERWISE NOTED HAVE A MINIMUM CENTERLINE RADIUS OF FIVE (5) TIMES THE NOMINAL PIPE DIAMETER.
 10. FOR PIPING AND INSTRUMENT SYMBOLS SEE DIM. W-400 THREE SHEETS.
 11. FIELD WELD JOINTS WHERE SPECIFICALLY NOTED ARE INDICATED (WJ).
 12. FOR VERTS AND DRAINS SEE DIM. W-442. VERTS AND LEAKS ARE INDICATED (V) AND (L).
 13. ALL FACE TO FACE AND END TO END DIM. ON PIPING VALVES ARE PER ANSI B16.10. UNLESS OTHERWISE NOTED.
 14. INDICATES FLOOR OR WALL PENETRATION.
 15. INDICATES FLANGE OR WALL PENETRATION.
 16. DIMENSIONS INDICATED ON THIS DRAWING ARE NOMINAL UNLESS OTHERWISE SPECIFIED FOR AN EQUIPMENT OR MATERIAL.

VERIFY THAT THE DIMENSIONS ON THIS DRAWING ARE THE SAME AS THE DIMENSIONS ON THE PIPING PLANT SPECIFICATIONS. IF ANY DISCREPANCY IS FOUND, NOTIFY THE CONTRACTOR FOR CLARIFICATION. BY SIGNING THIS DRAWING, THE CONTRACTOR ACCEPTS RESPONSIBILITY FOR THE ACCURACY OF THE DIMENSIONS.

POOR ORIGINAL

REV.	NO.	DESCRIPTION	DATE	BY	CHECKED	DATE
1	1	ISSUED FOR SUPPORT FAB. EG. 7220				

BECHTEL
AND ASSOCIATES
MIDLAND PLANT UNITS 1 & 2
CONSUMERS POWER COMPANY

HANGER ISOMETRIC
BORATED WATER AND CHEMICAL SUPPLY
SYSTEM "A"
UNIT-1

7220 H-612 SH7(Q) 5

REV.	NO.	DESCRIPTION	DATE	BY	CHECKED

17"
11"
8.5"
8.5"
11"
17"

RIDS

8302150197

