

17

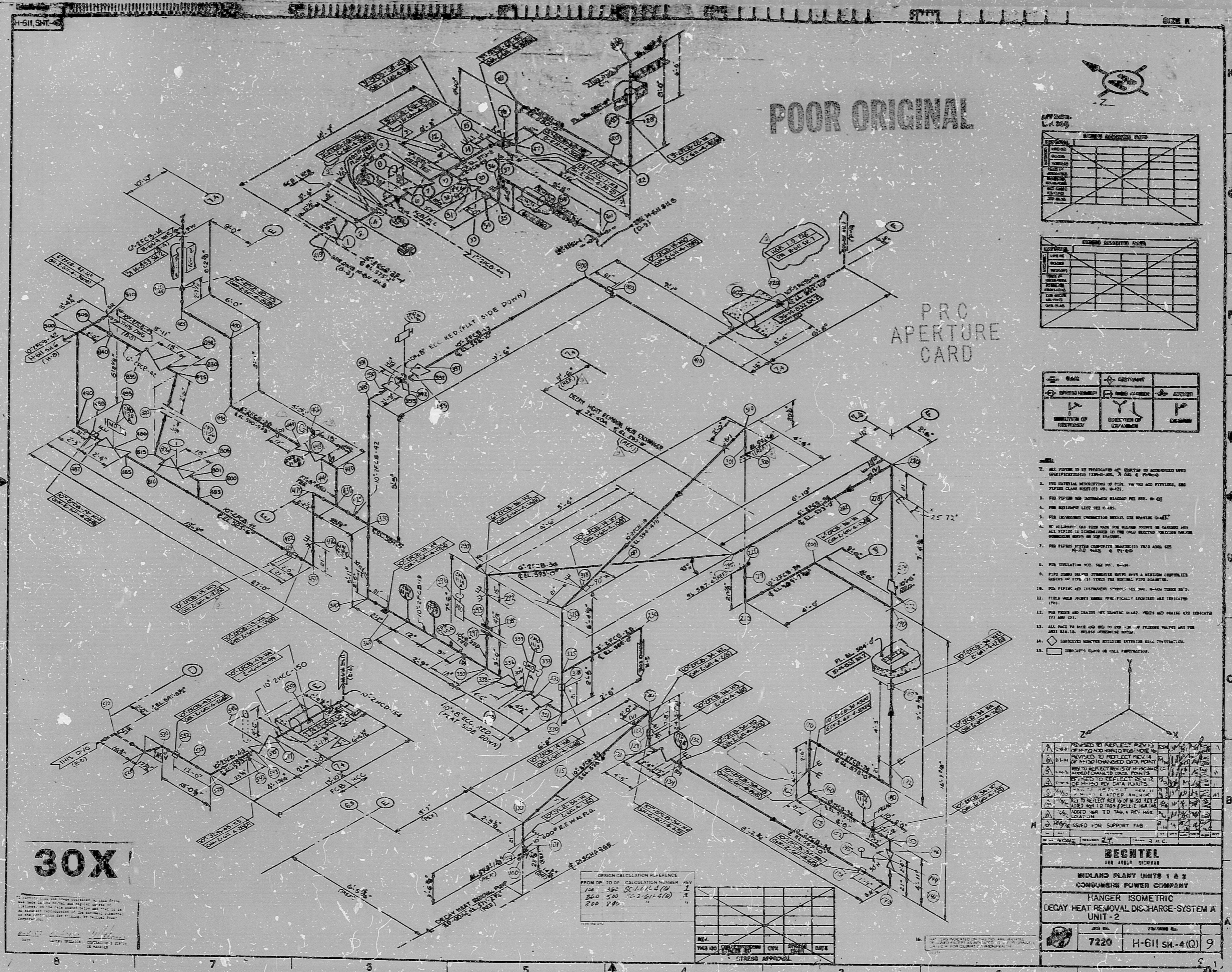
11

8.5

8.5

11

17



NO.	DATE	DESCRIPTION

NO.	DATE	DESCRIPTION

FLOW DIRECTION	DIRECTION OF EXPANSION

- ALL PIPING TO BE PROVIDED WITH WEIGHTS TO MAINTAIN PROPER CLEARANCES TO STRUCTURAL MEMBERS AND TO PREVENT SWAYING.
- FOR GENERAL INFORMATION OF FIELD, THE WEIGHTS AND FITTINGS, SEE PIPING CLASS SPECIFICATIONS, 10-101.
- FOR PIPING AND INSTRUMENTATION, SEE SPEC. 10-101.
- FOR INSTRUMENTATION, SEE SPEC. 10-101.
- IF ALLOWED, THE WEIGHTS FOR WEIGHTS SHOULD BE GARNERED AND ALL TYPES IS SUBMITTED TO THE FIELD SELECTED WEIGHTS FOR CONSTRUCTION OF THE ENGINEER.
- FOR PIPING SYSTEMS, WEIGHTS SHALL BE AS SHOWN ON THE DRAWING.
- FOR INSTRUMENTATION, SEE SPEC. 10-101.
- FOR PIPING AND INSTRUMENTATION, SEE SPEC. 10-101.
- FOR PIPING AND INSTRUMENTATION, SEE SPEC. 10-101.
- FOR PIPING AND INSTRUMENTATION, SEE SPEC. 10-101.
- FOR PIPING AND INSTRUMENTATION, SEE SPEC. 10-101.
- FOR PIPING AND INSTRUMENTATION, SEE SPEC. 10-101.
- FOR PIPING AND INSTRUMENTATION, SEE SPEC. 10-101.
- FOR PIPING AND INSTRUMENTATION, SEE SPEC. 10-101.
- FOR PIPING AND INSTRUMENTATION, SEE SPEC. 10-101.

NO.	DATE	DESCRIPTION	BY	CHKD.

BECHTEL
188 ASSECA BLDG.
MIDLAND PLANT UNITS 1 & 2
CONSUMERS POWER COMPANY
HANGER ISOMETRIC
DECAY HEAT REMOVAL DISCHARGE SYSTEM A
UNIT 2

7220 H-611 SH-4(O) 9

30X

CONSTRUCTION OF THIS DRAWING IS BASED ON THE ORIGINAL DESIGN PROVIDED BY THE CLIENT. THE CONTRACTOR SHALL BE RESPONSIBLE FOR THE ACCURACY OF THE INFORMATION PROVIDED BY THE CLIENT. THE CONTRACTOR SHALL BE RESPONSIBLE FOR THE ACCURACY OF THE INFORMATION PROVIDED BY THE CLIENT.

DESIGN CALCULATION REFERENCE
FROM DP TO DP CALCULATION NUMBER
100 500 2011 4.1 (1)
200 500 2011 4.1 (2)
300 500 2011 4.1 (3)

NO.	DATE	DESCRIPTION	BY	CHKD.

17

11

8.5

8.5

11

17

RIDS

8302150164

