

H-610

SIZE E

POOR ORIGINAL

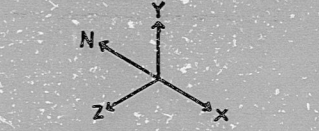
APPROX LFE 330

NO.	DATE	BY	CHKD BY	REVISION

NO.	DATE	BY	CHKD BY	REVISION

□	BLANK	⊕	RESTRAINT
○	SPRING HANGER	⊖	DRUM HANGER
⊙	DIRECTION OF RESTRAINT	⊕	DIRECTION OF EXPANSION
⊖		⊙	DISORDER

- NOTES:
- ALL PIPING TO BE FABRICATED AND ERUPTED IN ACCORDANCE WITH SPECIFICATIONS 7220-4-600
 - FOR MATERIAL DESCRIPTION OF PIPE, VALVES AND FITTINGS, SEE PIPING CLASS SHEETS 30-1-60-00
 - THE PIPING AND INSTRUMENT DIAGRAM IS TO BE IN ACCORDANCE WITH THE PIPING AND INSTRUMENT SYMBOLS SEE 30-1-60-00
 - NO ALLOWANCE HAS BEEN MADE FOR WELDED JOINTS OR GASKETS AND ALL PIPING IS DIMENSIONED TO THE CENTER LINE UNLESS OTHERWISE NOTED
 - THE PIPING SYSTEM CAPACITY (CS) THIS AREA IS 4-5-6
 - SEE 30-1-60-00
 - PIPE BENDS UNLESS OTHERWISE NOTED HAVE A MINIMUM CIRCULAR RADIUS OF FIVE (5) TIMES THE NOMINAL PIPE DIAMETER
 - THE PIPING AND INSTRUMENT SYMBOLS SEE 30-1-60-00
 - FIELD WELD JOINTS WHERE SPECIFICALLY NOTED ARE INDICATED (FW). THE WELD JOINTS ARE INDICATED BY AN "X" OR "Y" CHARACTER AS INDICATED (X, Y)
 - UNLESS OTHERWISE NOTED ALL WELD CONNECTIONS ARE 3/4" AND SHALL BE MADE AS NOTED
 - ALL WELD JOINTS AND ENDS TO END WITH OF FIELD WELD JOINTS ARE PER ASH 90-10 UNLESS OTHERWISE NOTED
 - INDICATED REACTOR BLOWS PENETRATION



NO.	DATE	BY	CHKD BY	REVISION

BECHTEL
AN IRVING COMPANY

MIDLAND PLANT UNITS 1 & 2
CONSUMERS POWER COMPANY

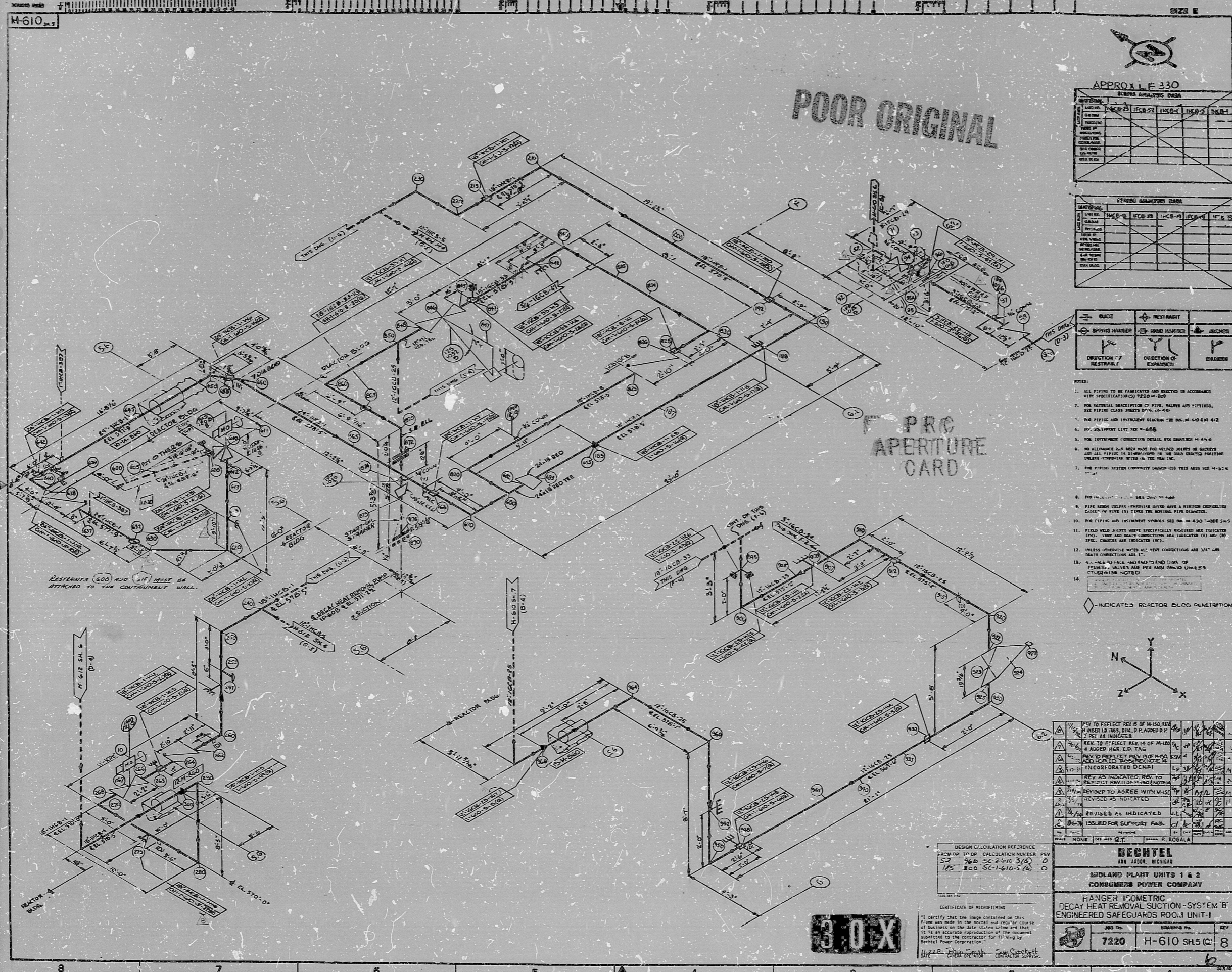
HANGER ISOMETRIC
DECAY HEAT REMOVAL SUCTION SYSTEM 'B'
ENGINEERED SAFEGUARDS ROOM, UNIT-1

7220	H-610 SH5 (C)	8
------	---------------	---

DESIGN CALCULATION REFERENCE
FROM TOP OF CALCULATION NUMBER PEV
324 866 SC-2-616 326
175 800 SC-1-616-2 (A)

30-X

CERTIFICATE OF MICROFILMING
I certify that the image contained on this frame was made in the normal and regular course of business on the date hereon shown and that it is an accurate reproduction of the document submitted to the contractor for filing by Bechtel Power Corporation.



11
8.5
8.5
11
8.5
11
17

11
8.5
8.5
11
8.5
11
17

RIDS

8302150149

