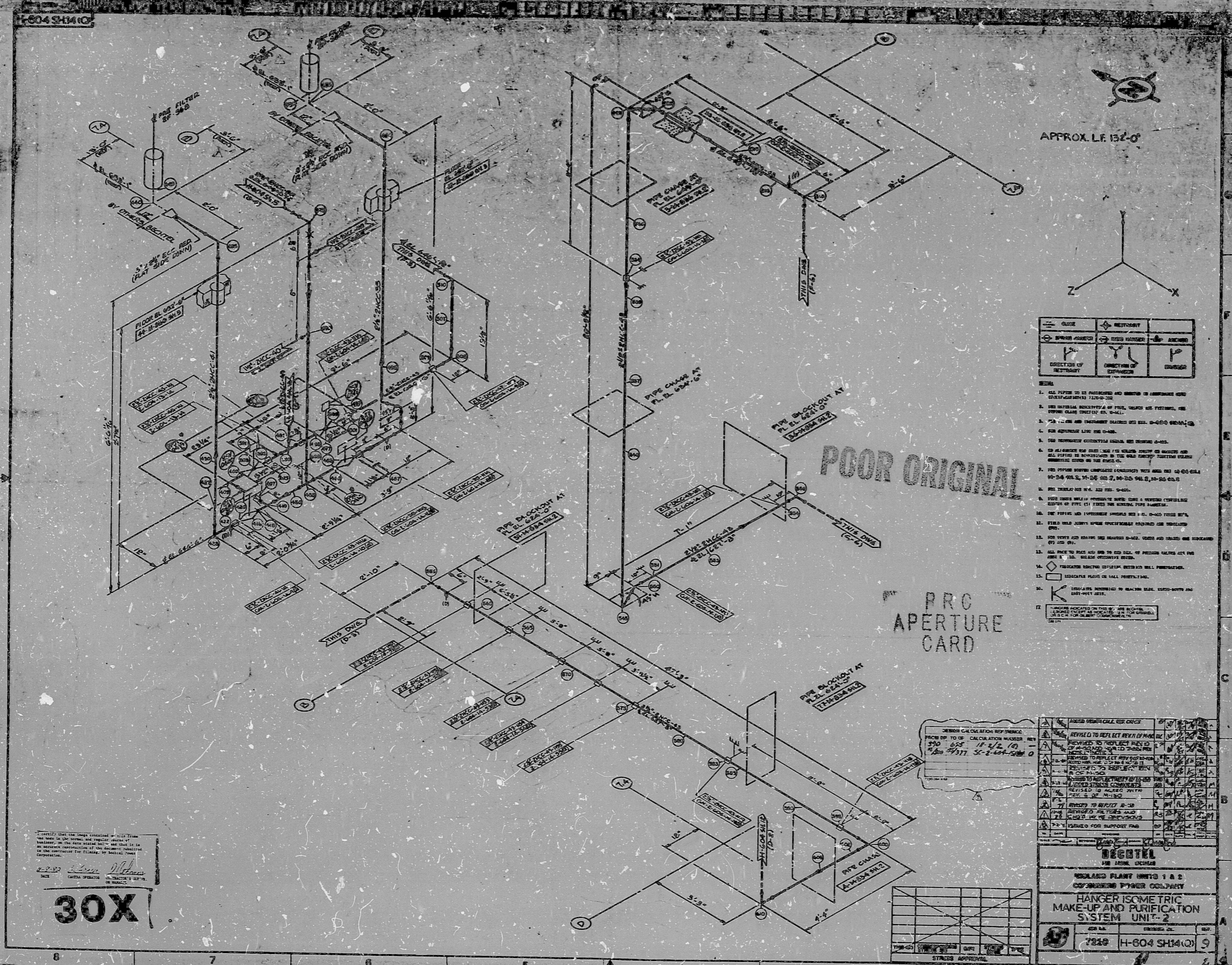
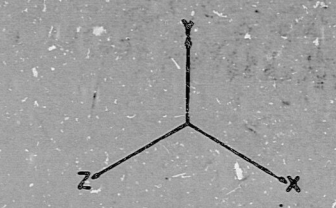


17"
11"
8.5"
8.5"
11"
17"

17"
11"
8.5"
8.5"
11"
17"



APPROX. L.F. 132'-0"



PIPE	VALVE	ANCHOR
PIPE BRACKET	PIPE COUPLER	ANCHOR
DIRECTION OF FLOW	DIRECTION OF FLOW	DIRECTION OF FLOW

- GENERAL
1. ALL PIPING TO BE FABRICATED AND INSTALLED IN ACCORDANCE WITH THE REQUIREMENTS OF THE DESIGN.
 2. THE MATERIAL SPECIFICATIONS OF PIPE, VALVES AND FITTINGS, THE PIPE COUPLER SHALL BE AS SPECIFIED.
 3. ALL PIPING AND FITTINGS SHALL BE WELDED TO THE DESIGN REQUIREMENTS.
 4. FOR APERTURE LINES USE 1/2" DIA.
 5. FOR INSTRUMENT CONNECTIONS USE 1/4" DIA.
 6. TO ALL WELDS USE 1/8" DIA. WELDED JOINTS OR WELDS FOR ALL PIPING TO BE WELDED IN THE FIELD EXCEPT THOSE WELDS SPECIFICALLY NOTED ON THE DRAWING.
 7. FOR PIPING WELDS COMPLIANCE WITH THE DESIGN SHALL BE AS SPECIFIED.
 8. FOR WELDS USE 1/8" DIA. WELDED JOINTS OR WELDS.
 9. FOR WELDS USE 1/8" DIA. WELDED JOINTS OR WELDS.
 10. FOR WELDS USE 1/8" DIA. WELDED JOINTS OR WELDS.
 11. FOR WELDS USE 1/8" DIA. WELDED JOINTS OR WELDS.
 12. FOR WELDS USE 1/8" DIA. WELDED JOINTS OR WELDS.
 13. FOR WELDS USE 1/8" DIA. WELDED JOINTS OR WELDS.
 14. FOR WELDS USE 1/8" DIA. WELDED JOINTS OR WELDS.
 15. FOR WELDS USE 1/8" DIA. WELDED JOINTS OR WELDS.
 16. FOR WELDS USE 1/8" DIA. WELDED JOINTS OR WELDS.
 17. FOR WELDS USE 1/8" DIA. WELDED JOINTS OR WELDS.

POOR ORIGINAL

PRC APERTURE CARD

DESIGN CALCULATION FOR REFERENCE FROM DES TO BE CALCULATION NUMBER REV 150 05 11-4-70 150 7977 5-1-64-200 0

NO.	REVISION	DATE	BY	CHKD.
1	REVISED TO REFLECT REV. OF PRC			
2	REVISED TO REFLECT REV. OF PRC			
3	REVISED TO REFLECT REV. OF PRC			
4	REVISED TO REFLECT REV. OF PRC			
5	REVISED TO REFLECT REV. OF PRC			
6	REVISED TO REFLECT REV. OF PRC			
7	REVISED TO REFLECT REV. OF PRC			
8	REVISED TO REFLECT REV. OF PRC			
9	REVISED TO REFLECT REV. OF PRC			
10	REVISED TO REFLECT REV. OF PRC			
11	REVISED TO REFLECT REV. OF PRC			
12	REVISED TO REFLECT REV. OF PRC			
13	REVISED TO REFLECT REV. OF PRC			
14	REVISED TO REFLECT REV. OF PRC			
15	REVISED TO REFLECT REV. OF PRC			
16	REVISED TO REFLECT REV. OF PRC			
17	REVISED TO REFLECT REV. OF PRC			

30X

DEGTEL	
FOR ARMO. CORP.	
ROSLAND PLANT UNITS 1 & 2	
COAST GUARD POWER COMPANY	
HANGER ISOMETRIC	
MAKE-UP AND PURIFICATION	
SYSTEM UNIT-2	
DES. NO.	7810
PROJECT NO.	H-804 SH14(O) 9

RIDS

8302150117

