

11  
8.5"

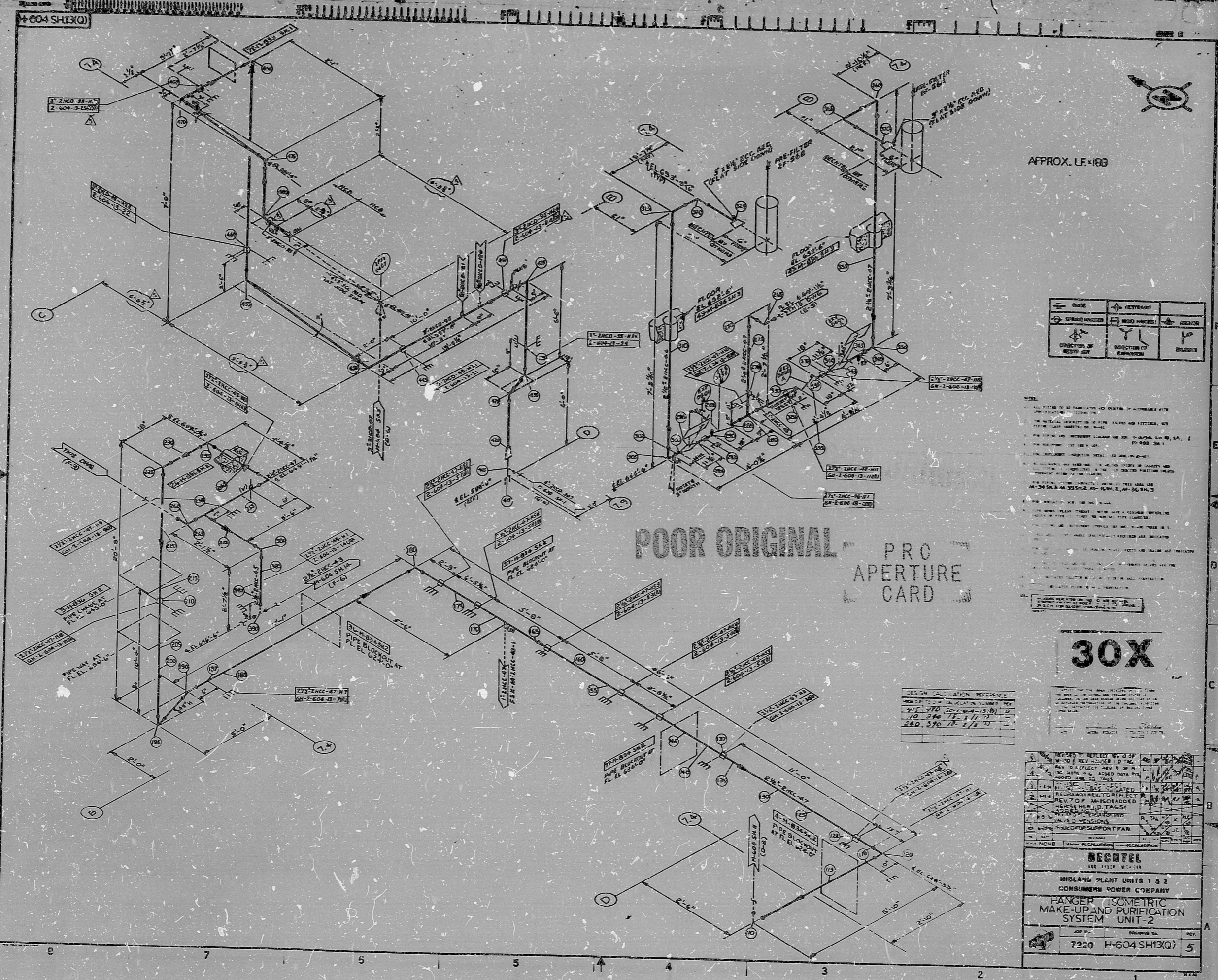
11  
8.5"

8.5"

11"

17"

This drawing and the design it represents are the property of BHEL. They are made based on the information supplied by the customer. The customer is responsible for the accuracy of the information supplied. The customer is also responsible for the accuracy of the information supplied. The customer is also responsible for the accuracy of the information supplied.



APPROX. LF:168

	VALVE		TANK
	PIPE		FILTER
	NOZZLE		SUPPORT
	DIRECTION OF EXPANSION		NOZZLE

NOTE:  
 1. ALL PIPES TO BE FABRICATED AND WELDED TO ACCORDANCE WITH THE REQUIREMENTS OF THE ISOMETRIC SYSTEM.  
 2. THE MATERIAL SPECIFICATION OF THE PIPES AND FITTINGS, SEE THE SPECIFICATION SHEET NO. 1-900-SH-10, SA, 1-900-SH-11, 1-900-SH-12, 1-900-SH-13, 1-900-SH-14, 1-900-SH-15, 1-900-SH-16, 1-900-SH-17, 1-900-SH-18, 1-900-SH-19, 1-900-SH-20, 1-900-SH-21, 1-900-SH-22, 1-900-SH-23, 1-900-SH-24, 1-900-SH-25, 1-900-SH-26, 1-900-SH-27, 1-900-SH-28, 1-900-SH-29, 1-900-SH-30, 1-900-SH-31, 1-900-SH-32, 1-900-SH-33, 1-900-SH-34, 1-900-SH-35, 1-900-SH-36, 1-900-SH-37, 1-900-SH-38, 1-900-SH-39, 1-900-SH-40, 1-900-SH-41, 1-900-SH-42, 1-900-SH-43, 1-900-SH-44, 1-900-SH-45, 1-900-SH-46, 1-900-SH-47, 1-900-SH-48, 1-900-SH-49, 1-900-SH-50, 1-900-SH-51, 1-900-SH-52, 1-900-SH-53, 1-900-SH-54, 1-900-SH-55, 1-900-SH-56, 1-900-SH-57, 1-900-SH-58, 1-900-SH-59, 1-900-SH-60, 1-900-SH-61, 1-900-SH-62, 1-900-SH-63, 1-900-SH-64, 1-900-SH-65, 1-900-SH-66, 1-900-SH-67, 1-900-SH-68, 1-900-SH-69, 1-900-SH-70, 1-900-SH-71, 1-900-SH-72, 1-900-SH-73, 1-900-SH-74, 1-900-SH-75, 1-900-SH-76, 1-900-SH-77, 1-900-SH-78, 1-900-SH-79, 1-900-SH-80, 1-900-SH-81, 1-900-SH-82, 1-900-SH-83, 1-900-SH-84, 1-900-SH-85, 1-900-SH-86, 1-900-SH-87, 1-900-SH-88, 1-900-SH-89, 1-900-SH-90, 1-900-SH-91, 1-900-SH-92, 1-900-SH-93, 1-900-SH-94, 1-900-SH-95, 1-900-SH-96, 1-900-SH-97, 1-900-SH-98, 1-900-SH-99, 1-900-SH-100.

POOR ORIGINAL PRO APERTURE CARD

30X

DESIGN CALCULATION REFERENCE

NO.	DATE	BY	CHKD.
1	17/11/73	...	...
2	17/11/73	...	...
3	17/11/73	...	...

1	REVISION	DATE	BY
1	ISSUED FOR REVIEW	17/11/73	...
2	REVISED	17/11/73	...
3	ISSUED FOR FABRICATION	17/11/73	...

BHEL	
INDIAN POWER PLANT UNITS 1 & 2	
CONSUMERS POWER COMPANY	
PANGER ISOMETRIC MAKE-UP AND PURIFICATION SYSTEM UNIT-2	
JOB NO.	REV.
7220 H-604 SH13(Q)	5

11  
8.5"

11  
8.5"

8.5"

11"

17"

RIDS

8302150111

