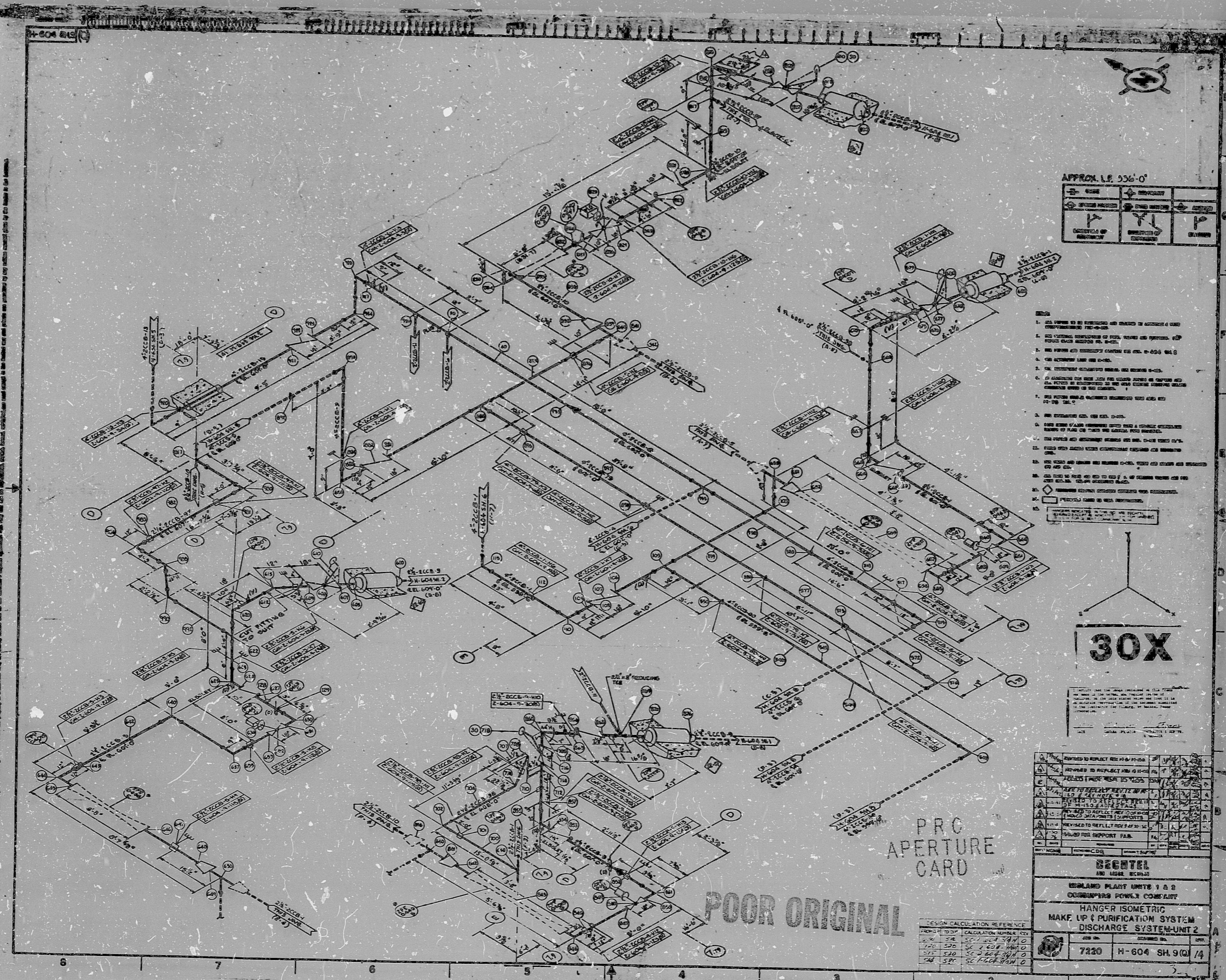


17"
11"
8.5"
8.5"
11"
17"



APPROX. L.P. 956'-0"

SYMBOL	DESCRIPTION
(Symbol)	(Description)
(Symbol)	(Description)
(Symbol)	(Description)

1. ALL WORK IS TO BE PERFORMED AND CHECKED TO ACCORDANCE WITH THE REQUIREMENTS OF THE CONTRACT.
2. THE CONTRACTOR SHALL BE RESPONSIBLE FOR THE PROTECTION OF ALL EXISTING UTILITIES AND STRUCTURES.
3. THE CONTRACTOR SHALL BE RESPONSIBLE FOR THE PROTECTION OF ALL EXISTING STRUCTURES AND UTILITIES.
4. THE CONTRACTOR SHALL BE RESPONSIBLE FOR THE PROTECTION OF ALL EXISTING STRUCTURES AND UTILITIES.
5. THE CONTRACTOR SHALL BE RESPONSIBLE FOR THE PROTECTION OF ALL EXISTING STRUCTURES AND UTILITIES.
6. THE CONTRACTOR SHALL BE RESPONSIBLE FOR THE PROTECTION OF ALL EXISTING STRUCTURES AND UTILITIES.
7. THE CONTRACTOR SHALL BE RESPONSIBLE FOR THE PROTECTION OF ALL EXISTING STRUCTURES AND UTILITIES.
8. THE CONTRACTOR SHALL BE RESPONSIBLE FOR THE PROTECTION OF ALL EXISTING STRUCTURES AND UTILITIES.
9. THE CONTRACTOR SHALL BE RESPONSIBLE FOR THE PROTECTION OF ALL EXISTING STRUCTURES AND UTILITIES.
10. THE CONTRACTOR SHALL BE RESPONSIBLE FOR THE PROTECTION OF ALL EXISTING STRUCTURES AND UTILITIES.

30X

POOR ORIGINAL

REVISION	DATE	BY	DESCRIPTION
1			
2			
3			
4			
5			
6			
7			
8			
9			
10			

SECRET	
ESLAND PLANT UNITS 1 & 2	
CONTAINING POWER COMPLIANT	
HANGER ISOMETRIC	
MAKE UP (PURIFICATION SYSTEM)	
DISCHARGE SYSTEM-UNIT 2	
7220	H-604 SH.9(Q) 14

DESIGN	CALCULATION	REFERENCE
SR	SC	SC
SR	SC	SC
SR	SC	SC
SR	SC	SC

RIDS

8302150096

