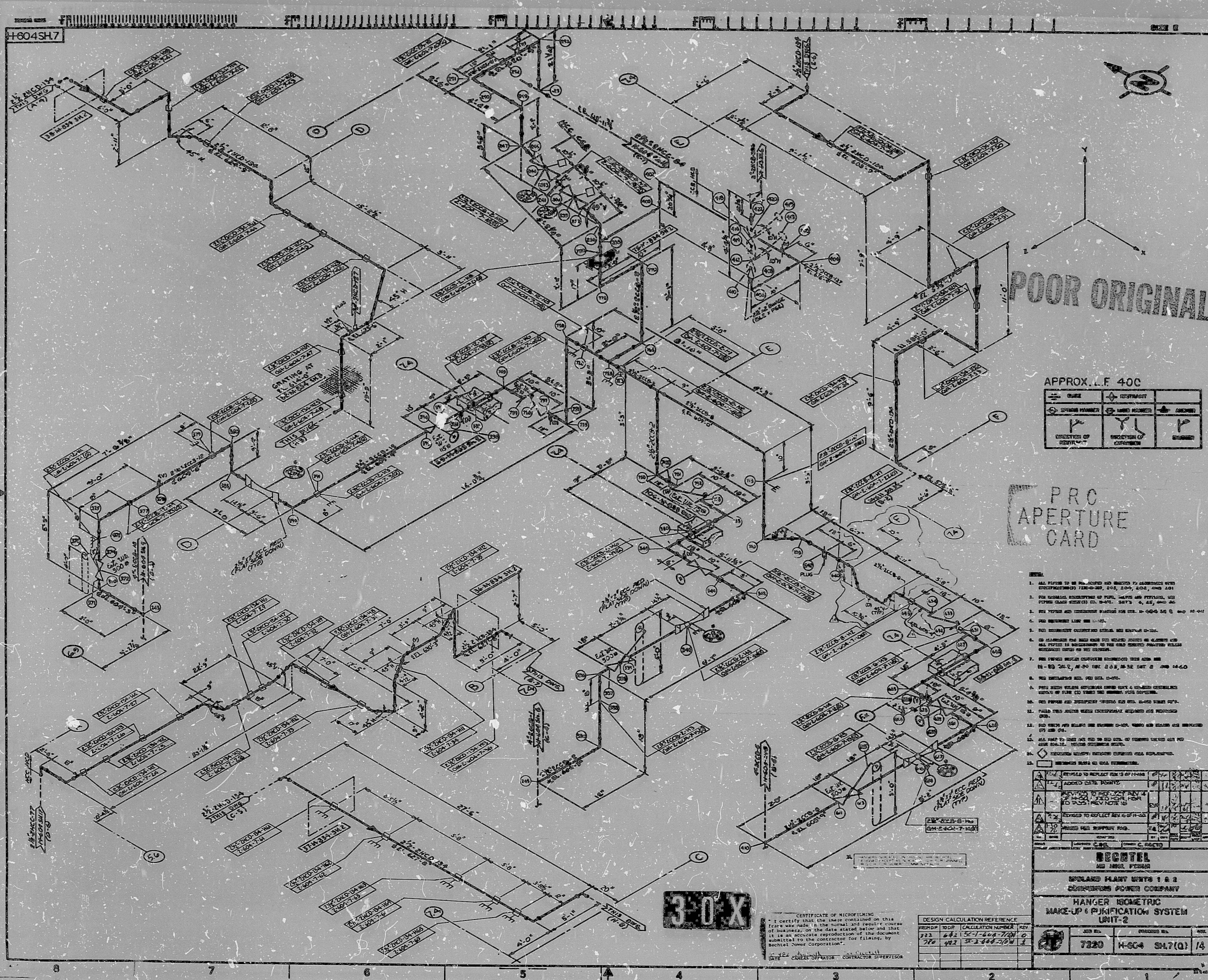


17"  
11"  
8.5"  
8.5"  
11"  
17"



POOR ORIGINAL

APPROX. L.F. 400

WELD	WELD	WELD
PLATE	PLATE	PLATE
BRACE	BRACE	BRACE
HANGER	HANGER	HANGER

PRO APERTURE CARD

1. ALL PARTS TO BE MANUFACTURED AND SUPPLIED BY APPROVED SUPPLIERS (SPECIFICATIONS) 1500-100, 200, 200, 200, AND 201
2. FOR GENERAL SPECIFICATIONS OF STEEL, WELDS AND FITTINGS, USE STEEL SPECIFICATIONS (AISC) 1500-100, 200, 200, AND 201
3. FOR WELDS AND CONNECTIONS, REFER TO AISC 1500-100, 200, 200, AND 201
4. ALL DIMENSIONS UNLESS OTHERWISE SPECIFIED ARE IN INCHES
5. ALL DIMENSIONS SHOWN ON THIS DRAWING ARE APPROXIMATE
6. ALL DIMENSIONS SHOWN ON THIS DRAWING ARE APPROXIMATE
7. ALL DIMENSIONS SHOWN ON THIS DRAWING ARE APPROXIMATE
8. ALL DIMENSIONS SHOWN ON THIS DRAWING ARE APPROXIMATE
9. ALL DIMENSIONS SHOWN ON THIS DRAWING ARE APPROXIMATE
10. ALL DIMENSIONS SHOWN ON THIS DRAWING ARE APPROXIMATE
11. ALL DIMENSIONS SHOWN ON THIS DRAWING ARE APPROXIMATE
12. ALL DIMENSIONS SHOWN ON THIS DRAWING ARE APPROXIMATE
13. ALL DIMENSIONS SHOWN ON THIS DRAWING ARE APPROXIMATE
14. ALL DIMENSIONS SHOWN ON THIS DRAWING ARE APPROXIMATE
15. ALL DIMENSIONS SHOWN ON THIS DRAWING ARE APPROXIMATE

3-0 X

CERTIFICATE OF MICROFILMING  
I certify that the data contained on this  
film was taken in the normal and useful course  
of business, on the data stated below and that  
it is an accurate reproduction of the document  
submitted to the contractor for filming, by  
Bechtel Power Corporation.

DATE: 12-24-64  
FILM: 3-0 X  
CONTRACTOR: BECHTEL POWER CORPORATION

FORM NO.	REVISION	DATE	BY	CHKD.
720	1	12-24-64	J. W. [unclear]	[unclear]
720	2	1-2-65	[unclear]	[unclear]

BECHTEL AND ASSOCIATED POWER	
ISLAND PLANT UNITS 1 & 2 CHANDLER POWER COMPANY	
HANGER ISOMETRIC MAKE-UP & PURIFICATION SYSTEM UNIT-2	
JOB NO. 7220	DRAWING NO. H-604 34.7(0) 14

17"  
11"  
8.5"  
8.5"  
11"  
17"



RIDS

8302150092

