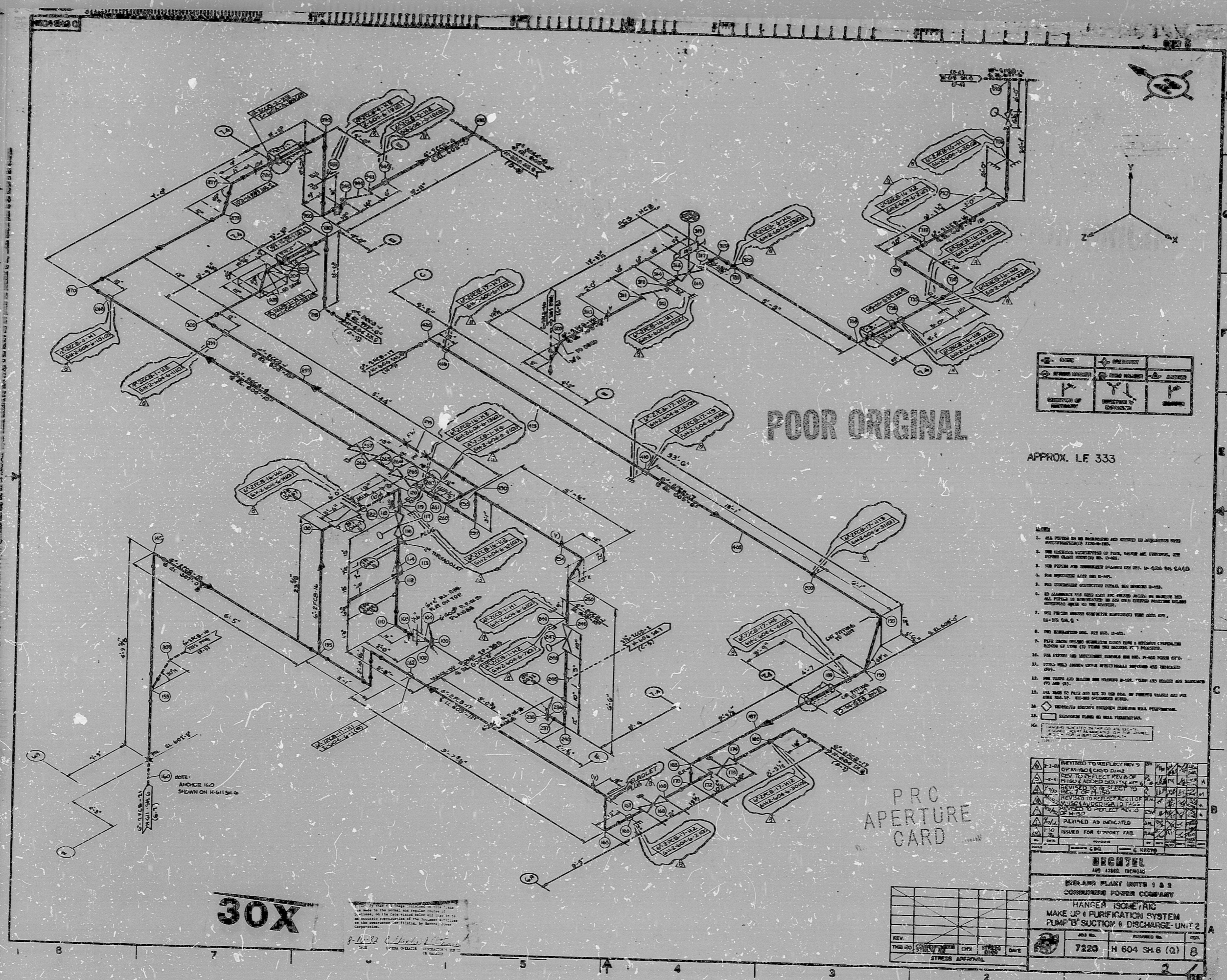


17"  
11"  
8.5"  
8.5"  
11"  
17"

17"  
11"  
8.5"  
8.5"  
11"  
17"



POOR ORIGINAL


APPROX. LF 333

- 1. ALL PIPING TO BE RECONSTRUCTED AND REDESIGNED TO ACCORDANCE WITH RECOMMENDED PIPING SPECIFICATIONS.
- 2. THE EXHAUSTION SYSTEMS OF THIS UNIT ARE TO BE REDESIGNED TO ACCORDANCE WITH THE RECOMMENDED PIPING SPECIFICATIONS.
- 3. THE EXHAUSTION SYSTEMS OF THIS UNIT ARE TO BE REDESIGNED TO ACCORDANCE WITH THE RECOMMENDED PIPING SPECIFICATIONS.
- 4. THE EXHAUSTION SYSTEMS OF THIS UNIT ARE TO BE REDESIGNED TO ACCORDANCE WITH THE RECOMMENDED PIPING SPECIFICATIONS.
- 5. THE EXHAUSTION SYSTEMS OF THIS UNIT ARE TO BE REDESIGNED TO ACCORDANCE WITH THE RECOMMENDED PIPING SPECIFICATIONS.
- 6. THE EXHAUSTION SYSTEMS OF THIS UNIT ARE TO BE REDESIGNED TO ACCORDANCE WITH THE RECOMMENDED PIPING SPECIFICATIONS.
- 7. THE EXHAUSTION SYSTEMS OF THIS UNIT ARE TO BE REDESIGNED TO ACCORDANCE WITH THE RECOMMENDED PIPING SPECIFICATIONS.
- 8. THE EXHAUSTION SYSTEMS OF THIS UNIT ARE TO BE REDESIGNED TO ACCORDANCE WITH THE RECOMMENDED PIPING SPECIFICATIONS.
- 9. THE EXHAUSTION SYSTEMS OF THIS UNIT ARE TO BE REDESIGNED TO ACCORDANCE WITH THE RECOMMENDED PIPING SPECIFICATIONS.
- 10. THE EXHAUSTION SYSTEMS OF THIS UNIT ARE TO BE REDESIGNED TO ACCORDANCE WITH THE RECOMMENDED PIPING SPECIFICATIONS.
- 11. THE EXHAUSTION SYSTEMS OF THIS UNIT ARE TO BE REDESIGNED TO ACCORDANCE WITH THE RECOMMENDED PIPING SPECIFICATIONS.
- 12. THE EXHAUSTION SYSTEMS OF THIS UNIT ARE TO BE REDESIGNED TO ACCORDANCE WITH THE RECOMMENDED PIPING SPECIFICATIONS.
- 13. THE EXHAUSTION SYSTEMS OF THIS UNIT ARE TO BE REDESIGNED TO ACCORDANCE WITH THE RECOMMENDED PIPING SPECIFICATIONS.
- 14. THE EXHAUSTION SYSTEMS OF THIS UNIT ARE TO BE REDESIGNED TO ACCORDANCE WITH THE RECOMMENDED PIPING SPECIFICATIONS.
- 15. THE EXHAUSTION SYSTEMS OF THIS UNIT ARE TO BE REDESIGNED TO ACCORDANCE WITH THE RECOMMENDED PIPING SPECIFICATIONS.
- 16. THE EXHAUSTION SYSTEMS OF THIS UNIT ARE TO BE REDESIGNED TO ACCORDANCE WITH THE RECOMMENDED PIPING SPECIFICATIONS.
- 17. THE EXHAUSTION SYSTEMS OF THIS UNIT ARE TO BE REDESIGNED TO ACCORDANCE WITH THE RECOMMENDED PIPING SPECIFICATIONS.
- 18. THE EXHAUSTION SYSTEMS OF THIS UNIT ARE TO BE REDESIGNED TO ACCORDANCE WITH THE RECOMMENDED PIPING SPECIFICATIONS.
- 19. THE EXHAUSTION SYSTEMS OF THIS UNIT ARE TO BE REDESIGNED TO ACCORDANCE WITH THE RECOMMENDED PIPING SPECIFICATIONS.
- 20. THE EXHAUSTION SYSTEMS OF THIS UNIT ARE TO BE REDESIGNED TO ACCORDANCE WITH THE RECOMMENDED PIPING SPECIFICATIONS.

PRO APERTURE CARD

30X

REV	DATE	BY	CHKD	DATE	BY
1					
2					
3					
4					
5					
6					
7					
8					
9					
10					
11					
12					
13					
14					
15					
16					
17					
18					
19					
20					

7220 H 604 SH.6 (Q) 8



RIDS

8307150088

