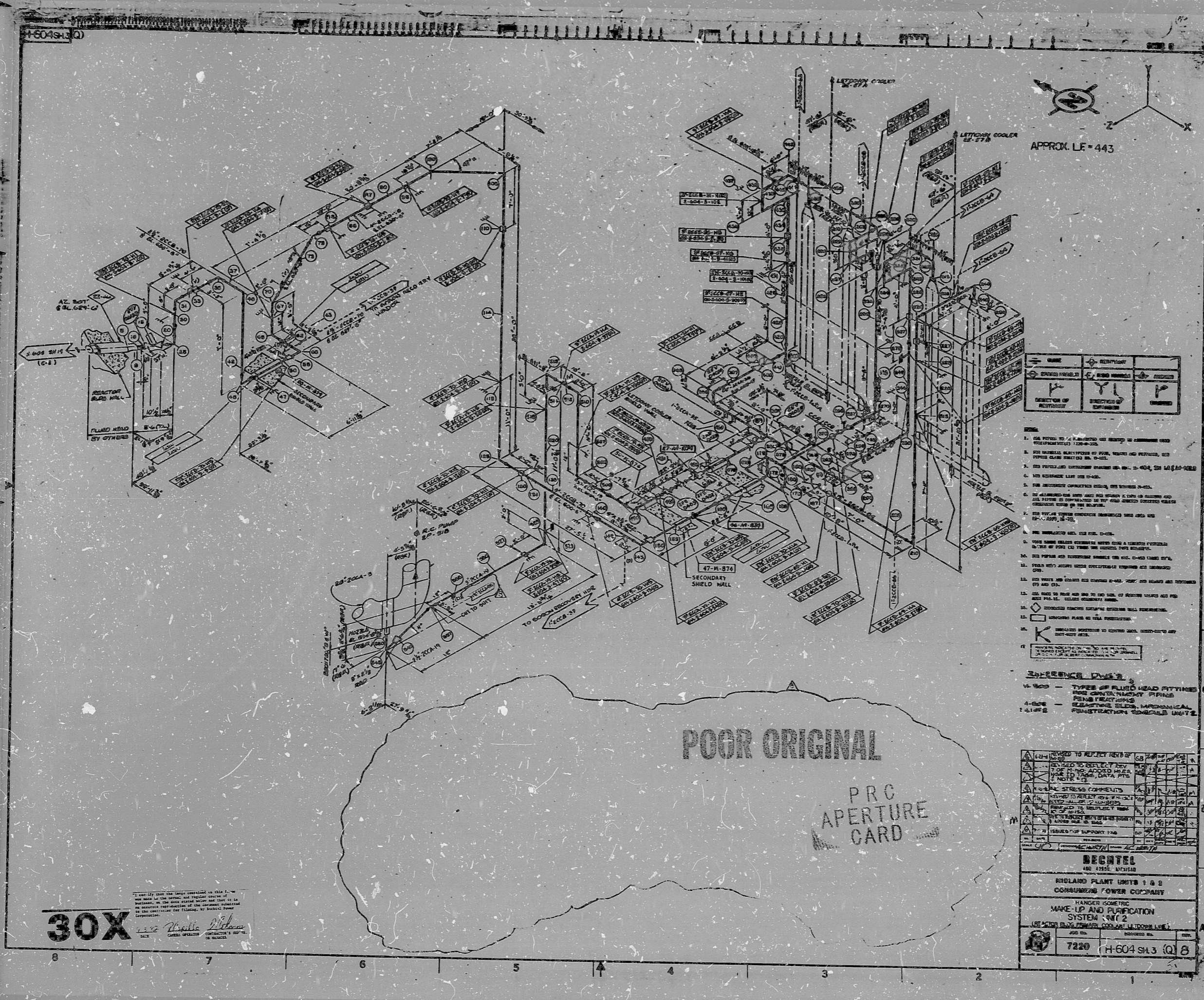


11  
8.5  
8.5  
11  
17

11  
8.5  
8.5  
11  
17



SYMBOL	DESCRIPTION
(Symbol)	SPRING HEADS
(Symbol)	PIPE HEADS
(Symbol)	DIRECTION OF FLOW
(Symbol)	DIRECTION OF EXPANSION

- 1. SEE PIPING TO BE FABRICATED AND INSTALLED IN ACCORDANCE WITH SPECIFICATIONS 1200-0-100.
- 2. FOR MATERIAL SPECIFICATIONS OF PIPES, FITTINGS AND FLANGES, SEE PIPING SPECIFICATION 1200-0-100.
- 3. THE PIPING AND EQUIPMENT SHALL BE IN ACCORDANCE WITH THE ASME CODE.
- 4. THE PIPING SHALL BE WELDED.
- 5. THE PIPING SHALL BE WELDED TO THE REACTOR VESSEL.
- 6. THE PIPING SHALL BE WELDED TO THE REACTOR VESSEL AND ALL PIPING IS SUPPORTED BY THE REACTOR VESSEL.
- 7. THE PIPING SHALL BE WELDED TO THE REACTOR VESSEL.
- 8. THE PIPING SHALL BE WELDED TO THE REACTOR VESSEL.
- 9. THE PIPING SHALL BE WELDED TO THE REACTOR VESSEL.
- 10. THE PIPING SHALL BE WELDED TO THE REACTOR VESSEL.
- 11. THE PIPING SHALL BE WELDED TO THE REACTOR VESSEL.
- 12. THE PIPING SHALL BE WELDED TO THE REACTOR VESSEL.
- 13. THE PIPING SHALL BE WELDED TO THE REACTOR VESSEL.
- 14. THE PIPING SHALL BE WELDED TO THE REACTOR VESSEL.
- 15. THE PIPING SHALL BE WELDED TO THE REACTOR VESSEL.
- 16. THE PIPING SHALL BE WELDED TO THE REACTOR VESSEL.
- 17. THE PIPING SHALL BE WELDED TO THE REACTOR VESSEL.

POOR ORIGINAL  
PRC  
APERTURE  
CARD

**30X**  
DATE: 11/19/64  
DRAWN BY: [Signature]  
CHECKED BY: [Signature]  
APPROVED BY: [Signature]

**REVISIONS**

NO.	DESCRIPTION	DATE	BY
1	ISSUED FOR SUPPORT FAB	11/19/64	[Signature]

**BECHTEL**  
480 AVENUE OF THE STARS  
REDLAND PLANT UNITS 1 & 2  
COMMERCE POWER COMPANY

HANGER SYSTEM  
MAKE-UP AND PURIFICATION  
SYSTEM (NO. 2)  
USE WITH PLUG FLOW COOLANT LEAKAGE UNIT

7220 H-604 SH3 (Q) B

RIDS

830215008

