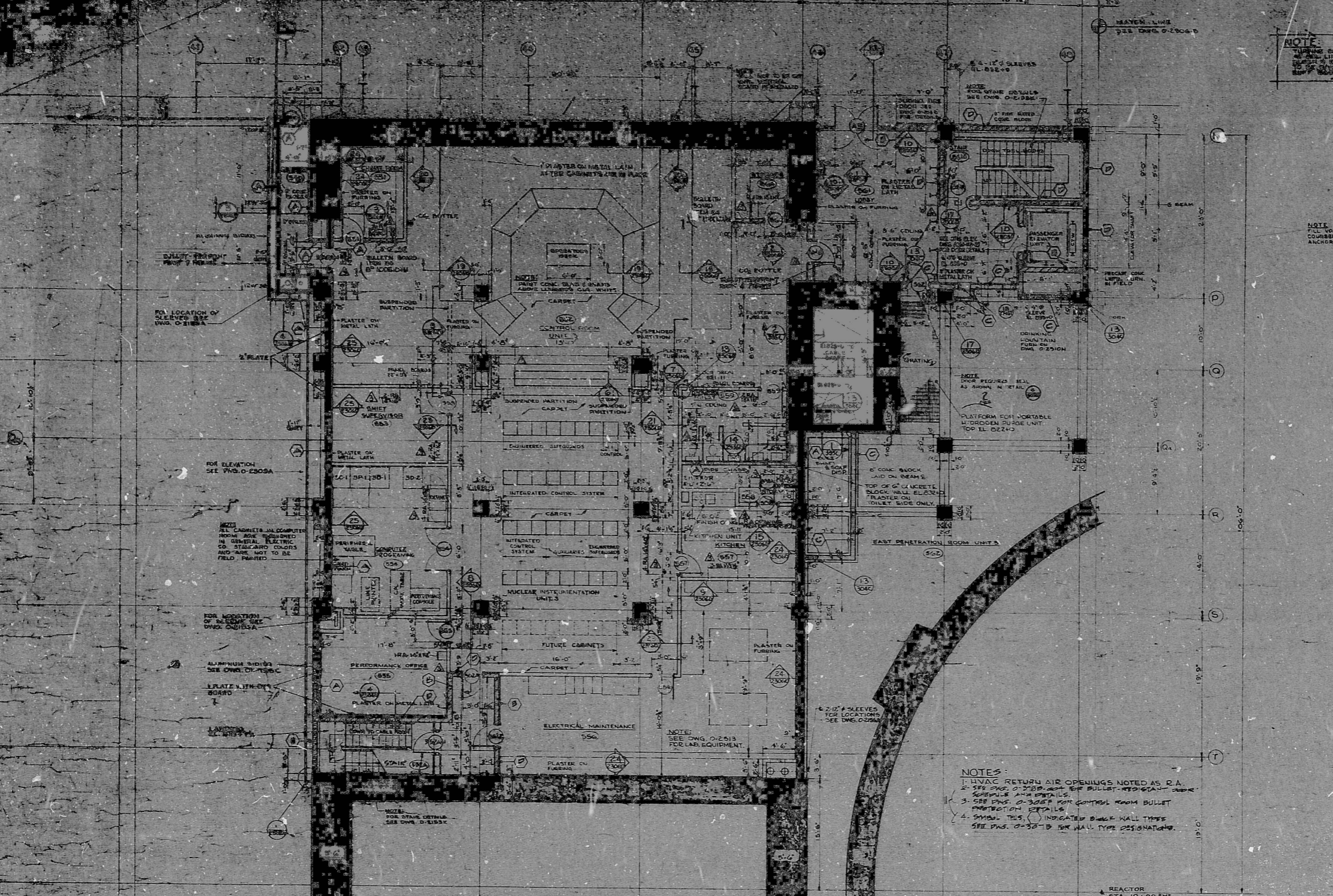


34"
22"
17"
11"
8.5"
11"
8.5"
11"
17"
22"
34"

34"
22"
17"
11"
8.5"
11"
8.5"
11"
17"
22"
34"



NOTE:
TURNING INSIDE SIDE OF WALL
MAY BE LATH (CONCRETE)
OR LATH (CONCRETE)
REINFORCED WITH 2x4x8 (DO NOT
USE REINFORCED CONCRETE)

NOTE:
FILL VOIDS OF TWO CONCRETE BLOCK
COURSES WITH ABOUT AT EL 822+0 FOR
ANCHORAGE OF ELEVATOR RAIL BRACKET.

FOR LOCATION OF
SLEEVES SEE
DWG. O-2306A

FOR ELEVATION
SEE DWG. O-2306A

ALL CABINETS AND COMPART-
MENT ROOF REQUIRED IN
GENERAL ELECTRIC
TO STEEL AND CON-
CRETE AND ARE NOT TO BE
FIELD PAINTED

FOR LOCATION OF
SLEEVES SEE
DWG. O-2306A

ALUMINUM SIDING
SEE DWG. O-2306A

PLATE WITH
GYP BOARD

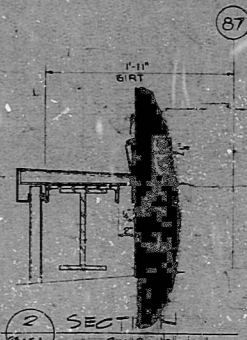
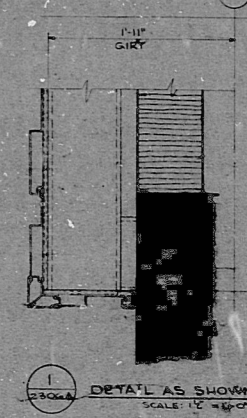
FOR LOCATION OF
SLEEVES SEE
DWG. O-2306A

NOTE:
FOR STAIR DETAILS
SEE DWG. O-2306A

NOTE:
TOP OF G. OF CONCRETE
BLOCK SHALL BE REINFORCED
WITH PLASTER ON
INSIDE SIDE ONLY.

NOTE:
FOR STAIR DETAILS
SEE DWG. O-2306A

NOTES:
1. HVAC RETURN AIR OPENINGS NOTED AS R.A.
2. SEE DWG. O-2306A FOR BULLET PROTECTION
3. SEE DWG. O-2306A FOR CONTROL ROOM BULLET
PROTECTION DETAILS
4. SYMBOL THIS () INDICATED DOUBLE WALL TYPES
SEE DWG. O-2306A FOR WALL TYPE DESIGNATIONS.



1 PLAN AT EL 822+0 - UNIT 3
SCALE: 1/8" = 1'-0"

- ITEM 62-1 (SPEC. NO. 06-111-1) ELEVATOR ELEVATOR
- ITEM 77-2 (NOT POINT) DISPOSABLE FOR KITCHEN UNIT
- ITEM 62-2 (GENERAL PURPOSE CONCRETE CO.) PRECAST CONCRETE LINTELS
- ITEM 77-3 (CLARK CEMENT-PUTTING CO.) KITCHEN UNIT
- ITEM 75-1 (SPEC. NO. 06-111-2) STONE FRONT MATERIAL AND CEILING AND SHADOWWOOD FRIED
- ITEM 78-3 (SHERWIN WILLIAMS CO.) LATHING AND PLASTERING
- ITEM 98 CARPET
- ITEM 62 (SPEC. NO. 06-111-1) MASONRY UNITS (UNIT WEIGHT CONCRETE BLOCK AND CONCRETE BLOCK) (SPECIALTY)
- ITEM 71 FINISH HARDWARE
- ITEM 70-1 (SPEC. NO. 06-111-1) SLIDING SIDE DOORS AND HARDWARE
- ITEM 70-2 (SPECIALTY) HOLLOW METAL DOORS AND FRAMES
- ITEM 70-3 (SPECIALTY) FINISH HARDWARE
- ITEM 71-2 (SPEC. NO. 06-111-2) CERAMIC TILE
- ITEM 72-1 (SPEC. NO. 06-111-1) VINYL-ASBESTOS TILE
- ITEM 79-3 (SPECIALTY) VINYL WALL COVERING
- ITEM 62 (SPECIALTY) WALL TILES FOR MASONRY WALLS
- ITEM 76-4 (SPECIALTY) TOILET PARTITIONS
- ITEM 74-2 (SPECIALTY) ACOUSTICAL CEILING
- ITEM 62-11 (SPEC. NO. 06-111-1) LUMINOUS CEILING
- ITEM 76-3 (SPECIALTY) MIRRORS AND PAPER HOLDERS
- ITEM 167-1 (MASON FIELD) SEE DWG. O-2306A FOR EXAMINATION SHOW ON FIELD ZONE

NOTES ON PLASTERING (SEE SPEC. 06-111-1)

1. THE PLASTERING CONTRACTOR SHALL EXAMINE ALL SURFACES BEFORE PLASTER IS APPLIED AND SHALL NOTIFY THE ENGINEER OF ALL UNSATISFACTORY CONDITIONS.
2. PLASTER ON GYPSUM LATH TO BE TWO-COAT PROCESS.
3. PLASTER ON METAL LATH TO BE THREE-COAT PROCESS.
4. BOTTOM EDGE OF PLASTER ABOVE TERRAZZO BASE AND ENTIRE PERIMETER OF ALL DOOR FRAMES SHALL HAVE A 1/4" SQUARE GASKET BEAD INSTALLED TO STOP THE PLASTER.
5. ALL INSIDE AND OUTSIDE CORNERS SHALL USE METAL REINFORCEMENT.
6. PLASTER DETAILS AT DOOR FRAMES ARE SHOWN IN SECTION 28 AND 25 ON DWG. O-2306A.
7. BASE BEAD FOR TERRAZZO TO BE INSTALLED BY PLASTERING CONTRACTOR BEFORE TERRAZZO WORK STARTS.
8. EXTENSION JOINTS TO BE INSTALLED IN PLASTER WHERE NOTED ON DRAWINGS.
9. METAL LATH SHALL BE USED OVER ALL CONCRETE OR CONCRETE BLOCK THAT IS TO BE PLASTERED WITH OUT FURRING.
10. ALL BACKSCOTTS ON PARTITIONS SHALL BE EXTENDED TO SLAB OR BEAMS ABOVE CEILING.
11. SPEC. 06-111-1 COVERS ONLY PLASTERING REQUIRED BY DWG. O-2306A AND O-2306B.

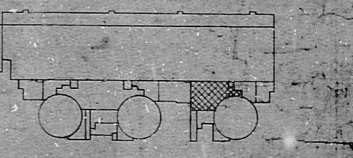
NOTES ON CONCRETE MASONRY

1. SEE O-2306A FOR NOTES ON CONCRETE MASONRY UNITS AND REINFORCEMENT.
2. CONCRETE BRICK SHALL BE LAID IN TWO (2) WYTHES IN A COMMON RUNNING BOND WITH REINFORCING AND JOINT TREATMENT TO BE AS NOTED ON O-2306A.

QA CONDITION 1
BLOCK WALL TYPES C & D ONLY
QA CONDITION 3
BLOCK WALL TYPES E & F ONLY

SYMBOLS
CONCRETE BLOCK
PRECAST CONCRETE BLOCK
STEEL STUD AND PARTITION
CONCRETE BRICK

REFERENCE DWGS.
GENERAL ARRANGEMENT - EL. 822+0 - 0-2306A THRU
ARCHITECTURAL - AUXILIARY BLDG. - EL. 822+0 - 0-2306B
ARCHITECTURAL - DOOR SCHEDULE - 0-54A THRU
CONCRETE - PLAN AT EL. 822+0 - 0-2306C
ELEC. CONTROL BOARDS - PLAN AT EL. 822+0 - 0-2306D
LIGHTING - PLAN AT EL. 822+0 - 0-2306E
TOILET ACCESSORY INSULATION - 0-2306F
TOILET ACCESSORY - MOUNTING HEIGHTS - 0-2306G



WORK THIS DWG. WITH O-2306B

DUKE POWER COMPANY
OCONEE NUCLEAR STATION UNITS #3
GENERAL ARRANGEMENT
AUXILIARY BUILDING
PLAN AT EL 822+0
SAFE LOAD PATHS

FINISH SCHEDULE - EL. 822+0 - AUXILIARY BUILDING

ROOM	FLOOR	BASE	WALLS	WALL FINISH AND PAINT	CEILING	CEILING HEIGHT	REMARKS
550 CORRIDOR		TERRAZZO	CERAMIC TILE	PLASTER	VINYL-ASBESTOS TILE	8'-0"	
551 CHANGING ROOM		TERRAZZO	CERAMIC TILE	PLASTER	VINYL-ASBESTOS TILE	8'-0"	
552 MEN'S ROOM		TERRAZZO	CERAMIC TILE	PLASTER	VINYL-ASBESTOS TILE	8'-0"	
553 WOMEN'S ROOM		TERRAZZO	CERAMIC TILE	PLASTER	VINYL-ASBESTOS TILE	8'-0"	
554 TOILET SUPERVISOR		TERRAZZO	CERAMIC TILE	PLASTER	VINYL-ASBESTOS TILE	8'-0"	
555 OPERATOR'S OFFICE		TERRAZZO	CERAMIC TILE	PLASTER	VINYL-ASBESTOS TILE	8'-0"	
556 ELECTRICAL MAINTENANCE		TERRAZZO	CERAMIC TILE	PLASTER	VINYL-ASBESTOS TILE	8'-0"	
557 KITCHEN		TERRAZZO	CERAMIC TILE	PLASTER	VINYL-ASBESTOS TILE	8'-0"	
558 STOVE		TERRAZZO	CERAMIC TILE	PLASTER	VINYL-ASBESTOS TILE	8'-0"	
559 OPERATOR'S REST ROOM		TERRAZZO	CERAMIC TILE	PLASTER	VINYL-ASBESTOS TILE	8'-0"	
560 UNASSIGNED ROOM		TERRAZZO	CERAMIC TILE	PLASTER	VINYL-ASBESTOS TILE	8'-0"	

PAINTING SCHEDULE - AUXILIARY BUILDING
EL. 822+0

MATERIAL / EQUIPMENT TO BE PAINTED	SHERWIN WILLIAMS COLOR & NO.	DPOC FINISHING SYSTEM	REMARKS
1. INTERIOR WALLS	AL-18	7A	
2. INTERIOR CEILING	AL-18	7A	
3. INTERIOR METAL DOOR FRAMES	AL-18	7A	
4. INTERIOR METAL DOOR INTERIORS	AL-18	7A	
5. ELEVATOR DOORS	AL-18	7A	

NO.	REVISIONS	CHKD.	APPR.	DATE	DRAWN	DATE

REL TO STEAM FOR INFORMATION

DWG. NO. O-2306A-6LP

RIAS

8109220658

