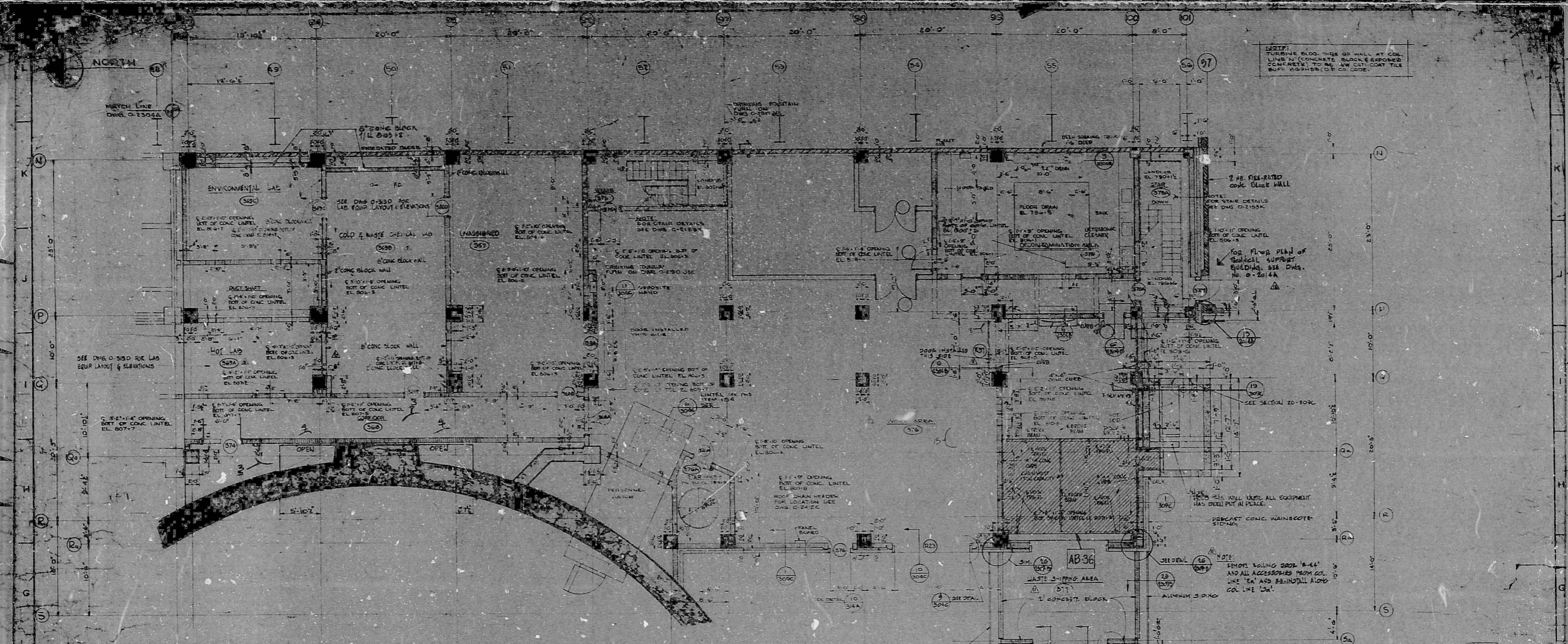
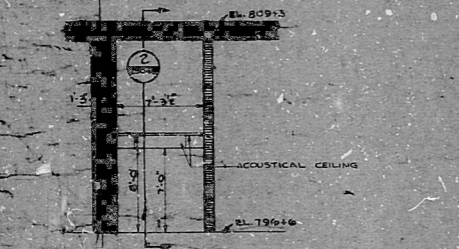


34"  
22"  
17"  
11"  
8.5"  
11"  
17"  
22"  
34"

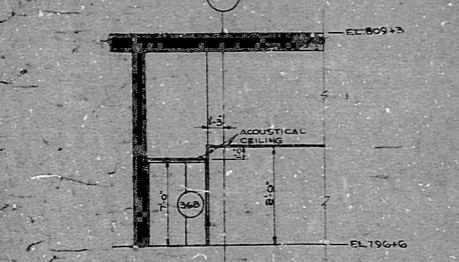
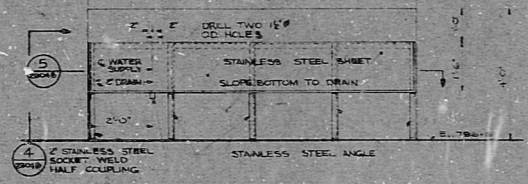
34"  
22"  
17"  
11"  
8.5"  
11"  
17"  
22"  
34"



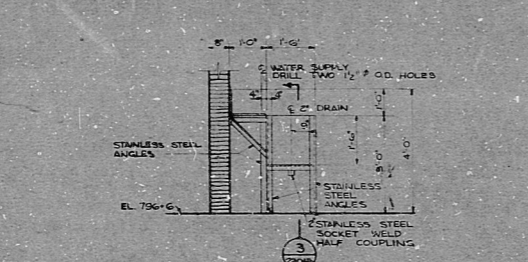
PLAN AT 796+6-UNIT 3  
SCALE 1/8" = 1'-0"



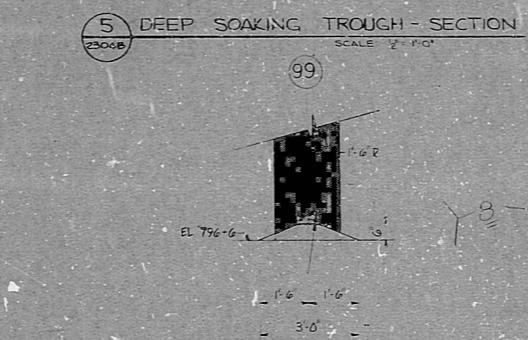
1 SECTION THRU CORRIDOR (360)  
SCALE 1/2" = 1'-0"



2 SECTION THRU CORRIDOR (350) & (360)  
SCALE 1/2" = 1'-0"



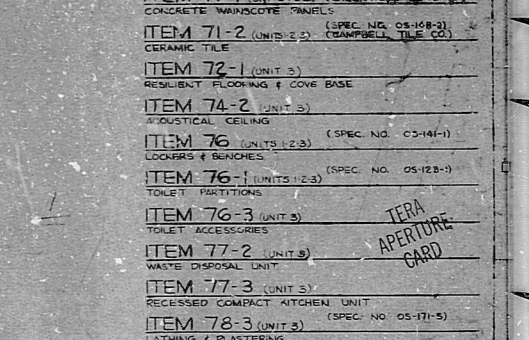
3 DEEP SOAKING TROUGH - SECTION  
SCALE 1/2" = 1'-0"



4 DEEP SOAKING TROUGH - ELEVATION  
SCALE 1/2" = 1'-0"



5 DEEP SOAKING TROUGH - SECTION  
SCALE 1/2" = 1'-0"

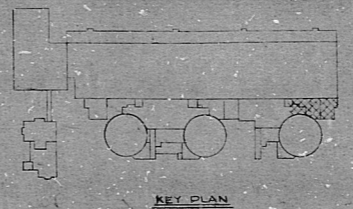


6 CURB - SECTION  
SCALE 1/2" = 1'-0"

PAINTING SCHEDULE - AUXILIARY BLDG. - EL. 796+6

MATERIAL OR EQUIPMENT TO BE PAINTED	SHERWIN WILLIAMS COLOR & NO.	DPCO COSTING SYSTEM CODE	REMARKS
EXPOSED CONCRETE COLUMNS, BEAMS & SLABS	SW 6010 COCKATUZZI	7b	
STEEL HANDRAIL (AT ALL STAIRS, PLATFORMS, FLOOR AREA)	SW 6010 COCKATUZZI	14	
CHANNEL FRAMES FOR DOORLINE (EXTERIOR)	BLACK	5b	
CHANNEL FRAMES FOR EXTERIOR PERSONNEL DOORS	BLACK	5b	
CHANNEL FRAMES FOR INTERIOR PERSONNEL DOORS	PRECAUTION BLUE 869L39	7c	
HOLLOW METAL DOOR FRAMES - INTERIOR	PRECAUTION BLUE 869L39	7c	
HOLLOW METAL DOORS - EXTERIOR	REM-GLO BONFIRE 1136	7d	
HOLLOW METAL DOORS - INTERIOR	PRECAUTION BLUE 869L39	7d	

LEGEND  
LOAD DROP AREA



KEY PLAN

- ITEM 6 (UNITS 1-2,4) (SPEC. NO. 05-11-1) ELEVATORS
- ITEM 62 (UNITS 1-2,3) (SPEC. NO. 05-11-2) CONCRETE BLOCK
- ITEM 62-1 (UNITS 1-2,3) (SPEC. NO. 05-11-2) MASONRY WALL TILES
- ITEM 62-2 (UNITS 1-2,3) (SPEC. NO. 05-11-2) CONCRETE LINTELS
- ITEM 70 (UNITS 1-2,3) (SPEC. NO. 05-11-1) POLYMER CONCRETE
- ITEM 70-2 (UNITS 1-2,3) (SPEC. NO. 05-11-1) POLYMER CONCRETE
- ITEM 70-3 (UNITS 1-2,3) (SPEC. NO. 05-11-1) POLYMER CONCRETE
- ITEM 71-1 (UNITS 1-2,3) (SPEC. NO. 05-11-1) CONCRETE WAINSCOTE PANELS
- ITEM 71-2 (UNITS 1-2,3) (SPEC. NO. 05-11-1) CERAMIC TILE
- ITEM 72-1 (UNIT 3) (SPEC. NO. 05-11-1) RESILIENT FLOORING & CONE BASE
- ITEM 74-2 (UNIT 3) (SPEC. NO. 05-11-1) ACOUSTICAL CEILING
- ITEM 76 (UNITS 1-2,3) (SPEC. NO. 05-11-1) LOCKERS & BENCHES
- ITEM 76-1 (UNITS 1-2,3) (SPEC. NO. 05-11-1) TOILET PARTITION
- ITEM 76-3 (UNIT 3) (SPEC. NO. 05-11-1) TOILET ACCESSORIES
- ITEM 77-2 (UNIT 3) (SPEC. NO. 05-11-1) WASTE DISPOSAL UNIT
- ITEM 77-3 (UNIT 3) (SPEC. NO. 05-11-1) RECESSED COMPACT KITCHEN UNIT
- ITEM 78-3 (UNIT 3) (SPEC. NO. 05-11-1) LATHING & PLASTERING
- ITEM 79 (UNIT 3) (SPEC. NO. 05-11-1) VINYL WALL COVERING
- ITEM 83 (UNITS 1-2,3) (SPEC. NO. 05-11-1) ORNEMENTS & BINS
- ITEM 165 (UNITS 1-2,3) (SPEC. NO. 05-11-1) GROUT ADHESIVE
- ITEM 80-1 (UNIT 3) (SPEC. NO. 05-11-1) TILE PARTITION

TERRA APERTURE GARD

DUKE POWER COMPANY  
OCONEE NUCLEAR STATION UNITS 1-3  
GENERAL ARRANGEMENT  
AUXILIARY BUILDING  
PLAN AT EL 796+6  
SAFE LOAD PATHS

REVISIONS

NO.	REVISIONS	CHD	APPR.	DATE	CIVIL	ELEC	MECH	INSTRUMENTED

DATE: 11/11/54  
SCALE: AS SHOWN  
DWG. NO. O-2304-B-SUP-10

RIDS

810922064-9

