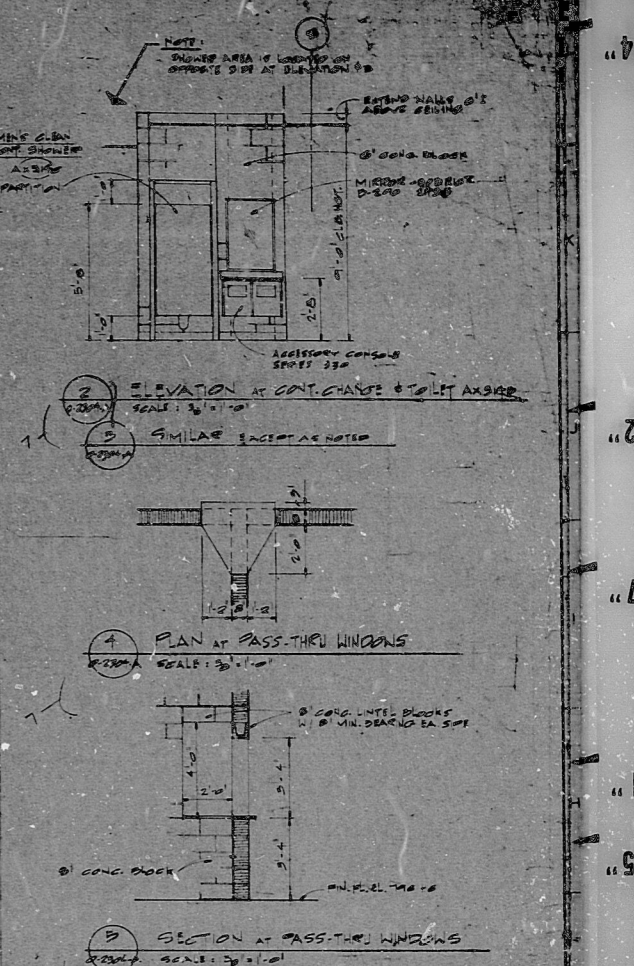
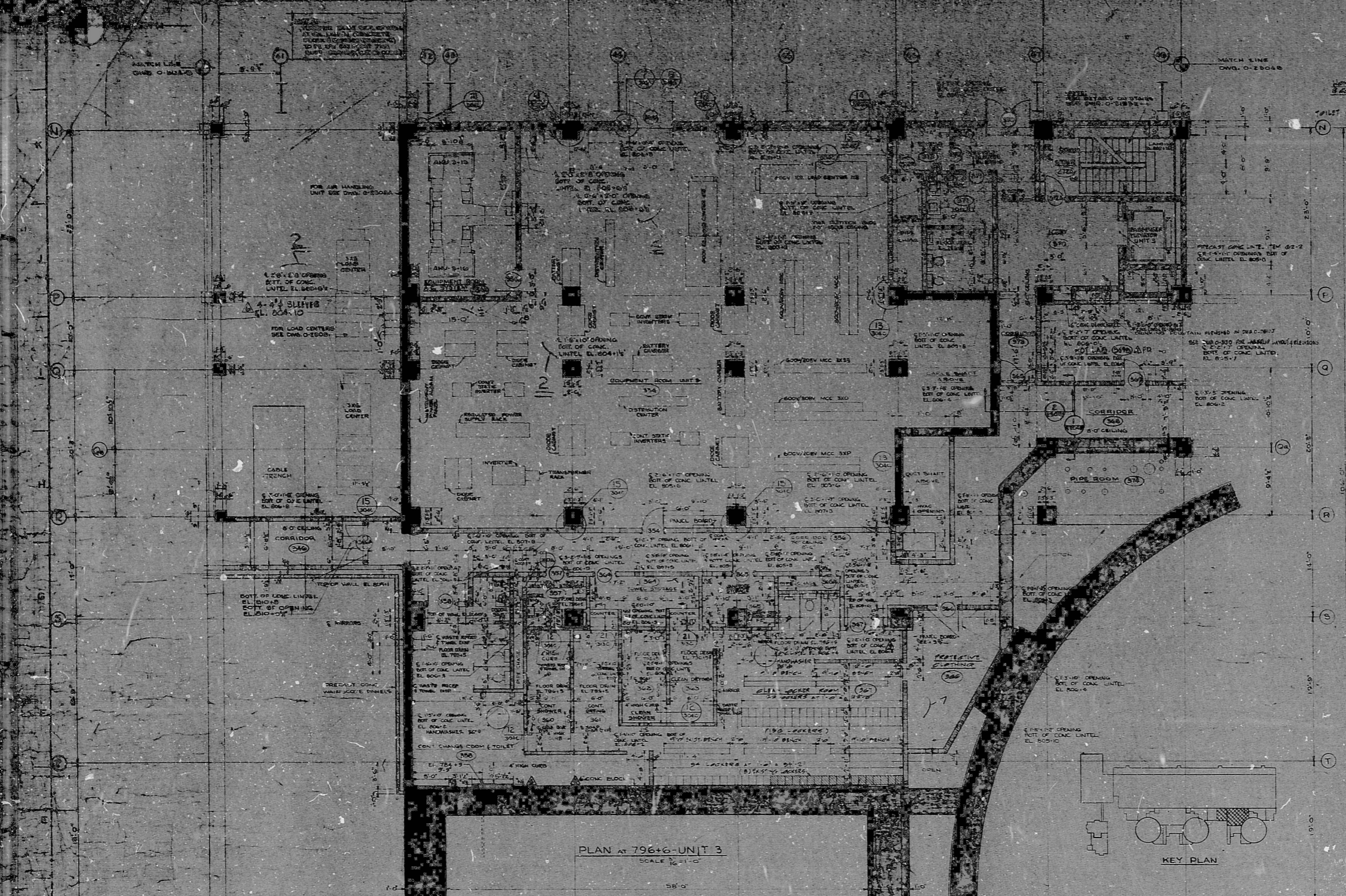


34  
22  
17  
11  
8.5  
11  
17  
22  
34



**NOTES ON CONCRETE MASONRY**

- CONCRETE MASONRY UNITS SHALL BE Laid IN COMMON RUNNING BOND. ALL JOINTS TO BE 1/2" WIDE AND TO BE TOGGLED TO AN EQUAL CONCRETE SHAPE.
- WALL REINFORCING: REINFORCING BARS SHALL BE INSTALLED WITHIN THE WALLS AT 16" O.C. VERTICALLY. REINFORCING BARS SHALL BE INSTALLED WITHIN THE WALLS AT 16" O.C. HORIZONTALLY THROUGHOUT THE CONSTRUCTION OF ALL BLOCK WALLS AT CORNERS OR PARTITION INTERSECTIONS. REINFORCING BARS SHALL BE INSTALLED STRICTLY ACCORDING TO MANUFACTURER'S INSTRUCTIONS.
- BUILDING-IN: FILL SPACES AROUND DOOR FRAMES (AND OTHER BUILDING ITEMS) SOLIDLY WITH MORTAR.
- FIRE-RATED CONCRETE BLOCK: NOTE CAREFULLY ALL BLOCKS THAT REQUIRE FIRE-RATED CONCRETE BLOCK.
- PRECAST CONCRETE UNITS: TOP SURFACE IS MARKED AND UNITS MUST BE INSTALLED WITH TOP SURFACE UP. ALL CONCRETE UNITS SHALL BE INSTALLED WITH PROTECTIVE COATING OF 1/2" ABOVE FINISH FLOOR (IN BLOCK COURSE) UNLESS OTHERWISE NOTED.
- SLIDE CLAMP DOORS: SET FIRE CLAMP DOOR FRAMES SO THAT THE FRAME HEAD OPENING IS 6" ABOVE THE FINISH FLOOR.

FINISH SCHEDULE - EL. 796+6 - AUXILIARY BUILDING

ROOM	FLOOR	BASE	WALLS	WALL FINISH AND PAINT	CEILING	CEILING HEIGHT	REMARKS	ROOM	FLOOR	BASE	WALLS	WALL FINISH AND PAINT	CEILING	CEILING HEIGHT	REMARKS
329 CORRIDOR						7'-0"		378 DECONTAMINATION AREA							
329A EQUIPMENT ROOM						7'-0"		378A STAIR							
329B CORRIDOR						7'-0"		379 STORAGE							
329C JANITORY WINGS						7'-0"		379A EQUIPMENT ROOM							
329D CONT. CHANGING ROOM & TOILET						7'-0"		379B HOT LAB							
329E CHANGING ROOM						7'-0"		379C COLD & WASTE CHEMICAL LAB							
329F CONT. SHOWER						7'-0"		379D ENVIRONMENTAL LAB							
329G CONT. DRYING						7'-0"									
329H CLEAN SHOWER						7'-0"									
329I CLEAN DRYING						7'-0"									
329J TOWEL STORAGE						7'-0"									
329K JANITORY STORAGE						7'-0"									
329L PROTECTIVE CLOTHING						7'-0"									
329M CLEAN LOCKER ROOM						7'-0"									
329N CORRIDOR						7'-0"									
329O JANITORY						7'-0"									
329P TOILET						7'-0"									
329Q TOILET						7'-0"									
329R TOILET						7'-0"									
329S TOILET						7'-0"									
329T TOILET						7'-0"									
329U TOILET						7'-0"									
329V TOILET						7'-0"									
329W TOILET						7'-0"									
329X TOILET						7'-0"									
329Y TOILET						7'-0"									
329Z TOILET						7'-0"									

- ITEMS**  
SEE DWG. 0-2304B
- PAINTING SCHEDULE**  
SEE DWG. 0-2304B
- MANUFACTURERS DWG. REFERENCE**
- HARDWARE SCHEDULE - 0-2304B
  - KEYING SCHEDULE - 0-2304B
  - ARCHITECTURAL DOOR TYPES & DETAILS - 0-2304B
  - ARCHITECTURAL WINDOW SCHEDULE - 0-2304B
  - CONCRETE - PLAN AT EL. 796+6 - 0-2304B
  - CONCRETE SECTIONS AT EL. 796+6 - 0-2304B
  - SAINTLY DRAIN & SUPPLY PIPING - 0-2304B
  - PIPING LAYOUT - PLAN AT EL. 796+6 - 0-2304B
  - PIPING LAYOUT - SECTIONS AT EL. 796+6 - 0-2304B
  - AIR CONDITIONING HEATING VENTILATION - 0-2304B
  - LIGHTING - FLOOR PLAN AT EL. 796+6 - 0-2304B
  - ELECTRICAL EQUIPMENT LAYOUT DECN. EL. 800+5 - 0-2304B
  - PIPE RISES - AUXILIARY BLDG. EL. 796+6 - 0-2304B
  - STAIR DETAILS - 0-2304B
- REFERENCE DWGS.**
- SYMBOLS**
- CONCRETE BLOCK
  - FIRE RATED CONCRETE BLOCK
  - STEEL STUD AND PLASTER PARTITION
  - CONCRETE BRICK

DUKE POWER COMPANY  
OCONEE NUCLEAR STATION UNITS 1-3  
GENERAL ARRANGEMENT  
AUXILIARY BUILDING  
PLAN AT EL. 796+6  
GAGE LOAD PATHS

REVISIONS

NO.	REVISIONS	CHKD.	APP. DATE	OVER.	SLAS.	INSTR.	INSTR. DATE

DWG. NO. 0-2304A-1

RIDS

8109220638

