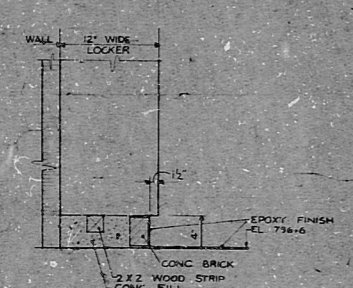
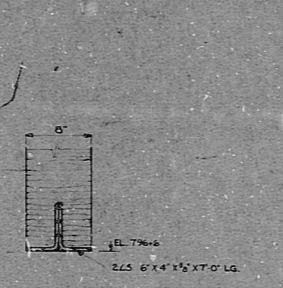




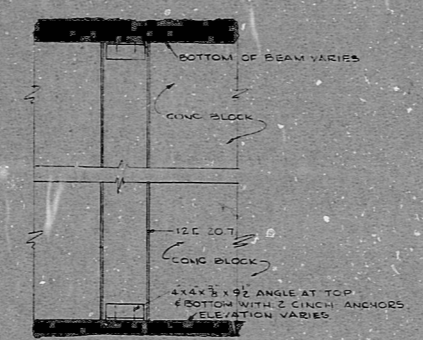
PLAN AT EL 796+6
SCALE: 1/8" = 1'-0"



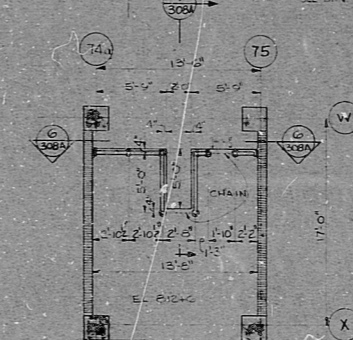
LOCKER BASE DETAIL
SCALE: 1/4" = 1'-0"



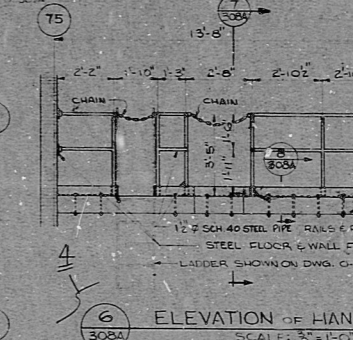
LINTEL DETAIL
SCALE: 1/4" = 1'-0"



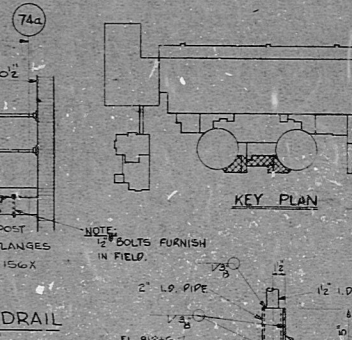
ELEVATION OF REINFORCING CHANNEL
SCALE: 3/8" = 1'-0"



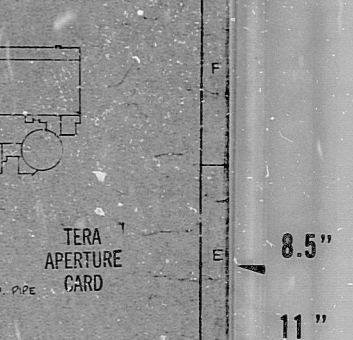
PLAN OF PLATFORM AT EL 812+6
SCALE: 3/8" = 1'-0"



ELEVATION OF HANDRAIL
SCALE: 3/8" = 1'-0"



KEY PLAN
SCALE: 1/4" = 1'-0"



SECTION
SCALE: 1/2" = 1'-0"

FINISH SCHEDULE - AUXILIARY BUILDING -							
ROOM NUMBER	ROOM	FLOOR	BASE	WALLS	WALL FINISH AND PAINT	CEILING	REMARKS
348	PUR TRENCH AREA						
349	STAIR						
349A	PUR TRENCH AREA						
350	STAIR						
350A	PUR TRENCH AREA						
351	STAIR						
351A	PUR TRENCH AREA						
352	CHAMBER ROOM						
352A	CHAMBER ROOM						
353	CHAMBER ROOM						
353A	CHAMBER ROOM						
354	CHAMBER ROOM						
354A	CHAMBER ROOM						
355	CHAMBER ROOM						
355A	CHAMBER ROOM						
356	CHAMBER ROOM						
356A	CHAMBER ROOM						
357	CHAMBER ROOM						
357A	CHAMBER ROOM						
358	CHAMBER ROOM						
358A	CHAMBER ROOM						
359	CHAMBER ROOM						
359A	CHAMBER ROOM						
360	CHAMBER ROOM						
360A	CHAMBER ROOM						
361	CHAMBER ROOM						
361A	CHAMBER ROOM						
362	CHAMBER ROOM						
362A	CHAMBER ROOM						
363	CHAMBER ROOM						
363A	CHAMBER ROOM						
364	CHAMBER ROOM						
364A	CHAMBER ROOM						
365	CHAMBER ROOM						
365A	CHAMBER ROOM						
366	CHAMBER ROOM						
366A	CHAMBER ROOM						
367	CHAMBER ROOM						
367A	CHAMBER ROOM						
368	CHAMBER ROOM						
368A	CHAMBER ROOM						
369	CHAMBER ROOM						
369A	CHAMBER ROOM						
370	CHAMBER ROOM						
370A	CHAMBER ROOM						
371	CHAMBER ROOM						
371A	CHAMBER ROOM						
372	CHAMBER ROOM						
372A	CHAMBER ROOM						
373	CHAMBER ROOM						
373A	CHAMBER ROOM						
374	CHAMBER ROOM						
374A	CHAMBER ROOM						
375	CHAMBER ROOM						
375A	CHAMBER ROOM						
376	CHAMBER ROOM						
376A	CHAMBER ROOM						
377	CHAMBER ROOM						
377A	CHAMBER ROOM						
378	CHAMBER ROOM						
378A	CHAMBER ROOM						
379	CHAMBER ROOM						
379A	CHAMBER ROOM						
380	CHAMBER ROOM						
380A	CHAMBER ROOM						
381	CHAMBER ROOM						
381A	CHAMBER ROOM						
382	CHAMBER ROOM						
382A	CHAMBER ROOM						
383	CHAMBER ROOM						
383A	CHAMBER ROOM						
384	CHAMBER ROOM						
384A	CHAMBER ROOM						
385	CHAMBER ROOM						
385A	CHAMBER ROOM						
386	CHAMBER ROOM						
386A	CHAMBER ROOM						
387	CHAMBER ROOM						
387A	CHAMBER ROOM						
388	CHAMBER ROOM						
388A	CHAMBER ROOM						
389	CHAMBER ROOM						
389A	CHAMBER ROOM						
390	CHAMBER ROOM						
390A	CHAMBER ROOM						
391	CHAMBER ROOM						
391A	CHAMBER ROOM						
392	CHAMBER ROOM						
392A	CHAMBER ROOM						
393	CHAMBER ROOM						
393A	CHAMBER ROOM						
394	CHAMBER ROOM						
394A	CHAMBER ROOM						
395	CHAMBER ROOM						
395A	CHAMBER ROOM						
396	CHAMBER ROOM						
396A	CHAMBER ROOM						
397	CHAMBER ROOM						
397A	CHAMBER ROOM						
398	CHAMBER ROOM						
398A	CHAMBER ROOM						
399	CHAMBER ROOM						
399A	CHAMBER ROOM						
400	CHAMBER ROOM						
400A	CHAMBER ROOM						
401	CHAMBER ROOM						
401A	CHAMBER ROOM						
402	CHAMBER ROOM						
402A	CHAMBER ROOM						
403	CHAMBER ROOM						
403A	CHAMBER ROOM						
404	CHAMBER ROOM						
404A	CHAMBER ROOM						
405	CHAMBER ROOM						
405A	CHAMBER ROOM						
406	CHAMBER ROOM						
406A	CHAMBER ROOM						
407	CHAMBER ROOM						
407A	CHAMBER ROOM						
408	CHAMBER ROOM						
408A	CHAMBER ROOM						
409	CHAMBER ROOM						
409A	CHAMBER ROOM						
410	CHAMBER ROOM						
410A	CHAMBER ROOM						
411	CHAMBER ROOM						
411A	CHAMBER ROOM						
412	CHAMBER ROOM						
412A	CHAMBER ROOM						
413	CHAMBER ROOM						
413A	CHAMBER ROOM						
414	CHAMBER ROOM						
414A	CHAMBER ROOM						
415	CHAMBER ROOM						
415A	CHAMBER ROOM						

PAINTING SCHEDULE - AUXILIARY BLDG. -		
MATERIAL OR EQUIPMENT TO BE PAINTED	SHERWIN WILLIAMS COLOR (10)	REMARKS
STEEL HANDRAIL (AT ALL STAIRS, PLATFORMS, FLOOR AREA, ETC.)	RED-640 ALLIGATOR	SECRET (76)
CHANNEL FRAMES FOR ROLLING DOORS (EXTERIOR)	BLACK	26
CHANNEL FRAMES FOR EXTERIOR PERSONNEL DOORS	BLACK	26
CHANNEL FRAMES FOR INTERIOR PERSONNEL DOORS (FOR LUG DOORS)	PRECATON BLUE 845/133	26
HOLLOW METAL DOOR FRAMES - INTERIOR	PRECATON BLUE 845/133	26
HOLLOW METAL DOORS - EXTERIOR	PRECATON BLUE 845/133	26
HOLLOW METAL DOORS - INTERIOR	PRECATON BLUE 845/133	26

NOTES ON CONCRETE MASONRY
1. SEE DWG. O-300A
2. ALL CONC. BLOCK 8" THICK UNLESS NOTED.

GENERAL NOTES
1. SEE DWG. O-314A AND DOOR SCHEDULE O-314A-1
THRU O-314A-15 FOR ALL DOOR CONSTRUCTION DETAILS.

MANUFACTURERS DWG. REFERENCE
HARDWARE SCHEDULE O-311
KEY SCHEDULE O-312
DOOR AND FRAME SCHEDULE O-313
TOILET PARTITIONS O-314
STAIR PARTITION O-315

REFERENCE DWGS.
GENERAL ARRANGEMENT - EL 796+6 O-300A
ARCH - HOT MACH. SHOP - SPENT FUEL POOL O-300A-C
ARCH - EXTERIOR ELEVATIONS O-300A-A
ARCH - DOOR TYPES & DETAILS O-314
ARCH - DOOR SCHEDULE O-314-1 THRU O-314-15
CONCRETE - WEST PENETRATION ROOMS O-314A
CONCRETE - FUEL LOADING O-315
CONCRETE - HOT MACHINE SHOP O-315
MACHINE LOCATIONS O-315

SYMBOLS
CONCRETE BLOCK

DUKE POWER COMPANY
OCONEE NUCLEAR STATION UNIT #3
GENERAL ARRANGEMENT
AUXILIARY BUILDING
PLAN AT EL 796+6
SAFE LOAD PATHS

34
22
17
11
8.5
11
17
22
34

34
22
17
11
8.5
11
17
22
34

RIDS

8109220604

