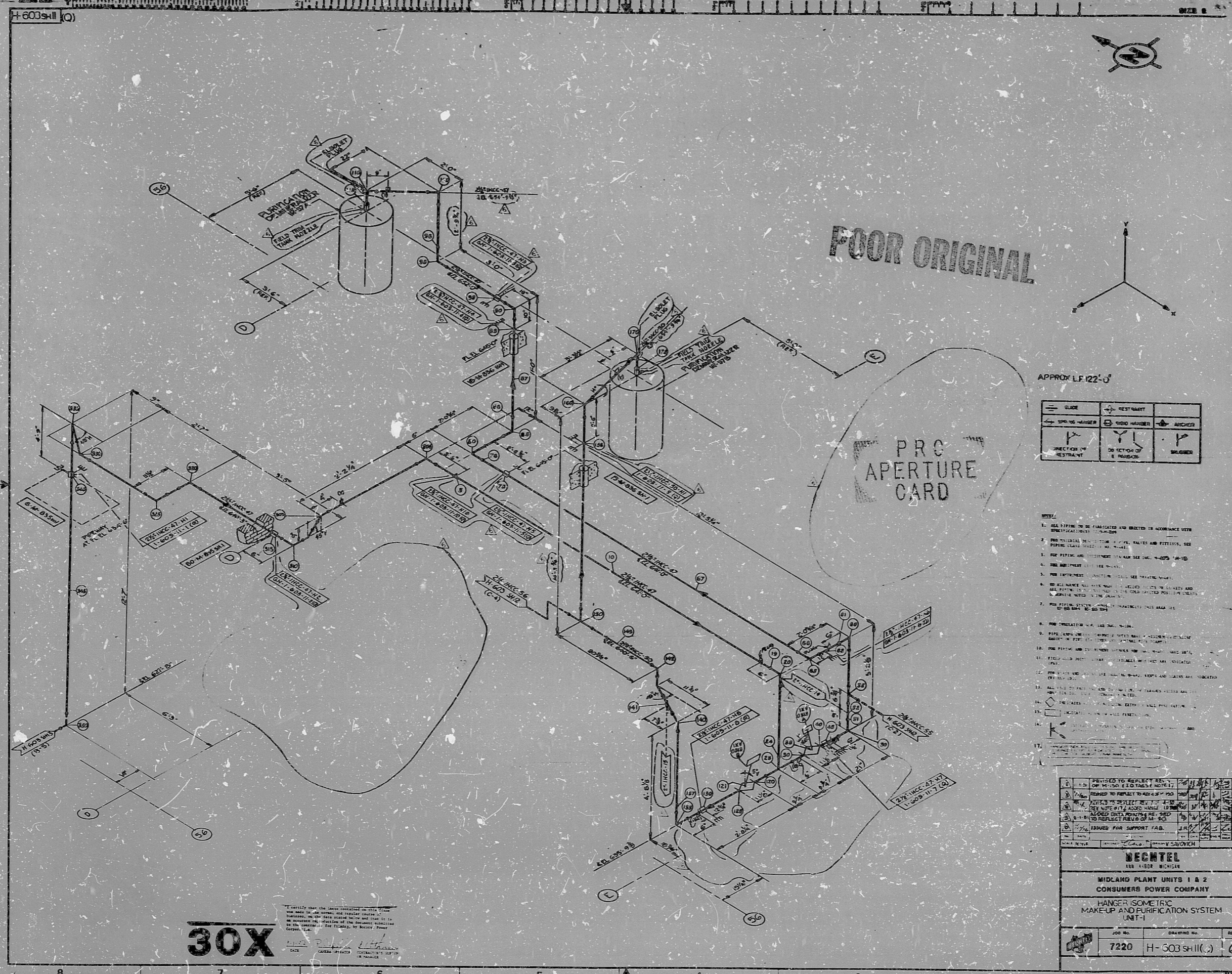


17"
11"
8.5"
8.5"
11"
17"

17"
11"
8.5"
8.5"
11"
17"



FOOR ORIGINAL

APPROX LF 122'-0"

GLUE	RESTRAINT	ANCHOR
SPONGE	WOOD MEMBER	DO SECTION OF
DIRECT RESTRAINT	DO SECTION OF	DO SECTION OF

- NOTES:
1. SEE LISTING TO BE MANUFACTURED AND INSTALLED IN ACCORDANCE WITH SPECIFICATIONS 104-109.
 2. FOR MATERIAL SPECIFICATIONS, VALUES AND FITTINGS, SEE PIPING STANDARDS 104-109.
 3. FOR PIPING AND FITTINGS, SEE PIPING STANDARDS 104-109.
 4. FOR MATERIALS, SEE LISTING.
 5. FOR DIMENSIONS, SEE LISTING.
 6. FOR ALL WELDS, SEE LISTING.
 7. FOR ALL WELDS, SEE LISTING.
 8. FOR ALL WELDS, SEE LISTING.
 9. FOR ALL WELDS, SEE LISTING.
 10. FOR PIPING AND FITTINGS, SEE LISTING.
 11. FIELD AND SHOP WELDS, SEE LISTING.
 12. FOR ALL WELDS, SEE LISTING.
 13. FOR ALL WELDS, SEE LISTING.
 14. FOR ALL WELDS, SEE LISTING.
 15. FOR ALL WELDS, SEE LISTING.
 16. FOR ALL WELDS, SEE LISTING.
 17. FOR ALL WELDS, SEE LISTING.

30X

DATE: _____
 DRAWN BY: _____
 CHECKED BY: _____
 APPROVED BY: _____

REVISED TO REFLECT REV. 104-109	REV. 1	DATE	BY
REVISED TO REFLECT REV. 104-109	REV. 2	DATE	BY
REVISED TO REFLECT REV. 104-109	REV. 3	DATE	BY
REVISED TO REFLECT REV. 104-109	REV. 4	DATE	BY
REVISED TO REFLECT REV. 104-109	REV. 5	DATE	BY
REVISED TO REFLECT REV. 104-109	REV. 6	DATE	BY

ISSUED FOR SUPPORT FAB. J.M.

DATE: _____

BY: _____

BECHTEL
 480 LEXIE MICHIGAN
 MIDLAND PLANT UNITS 1 & 2
 CONSUMERS POWER COMPANY
 HANGER ISOMETRIC
 MAKE-UP AND PURIFICATION SYSTEM
 (INT.)

JOB NO. 7220 DRAWING NO. H-503 SHII(C) REV. 6

RIDS

8302140217

