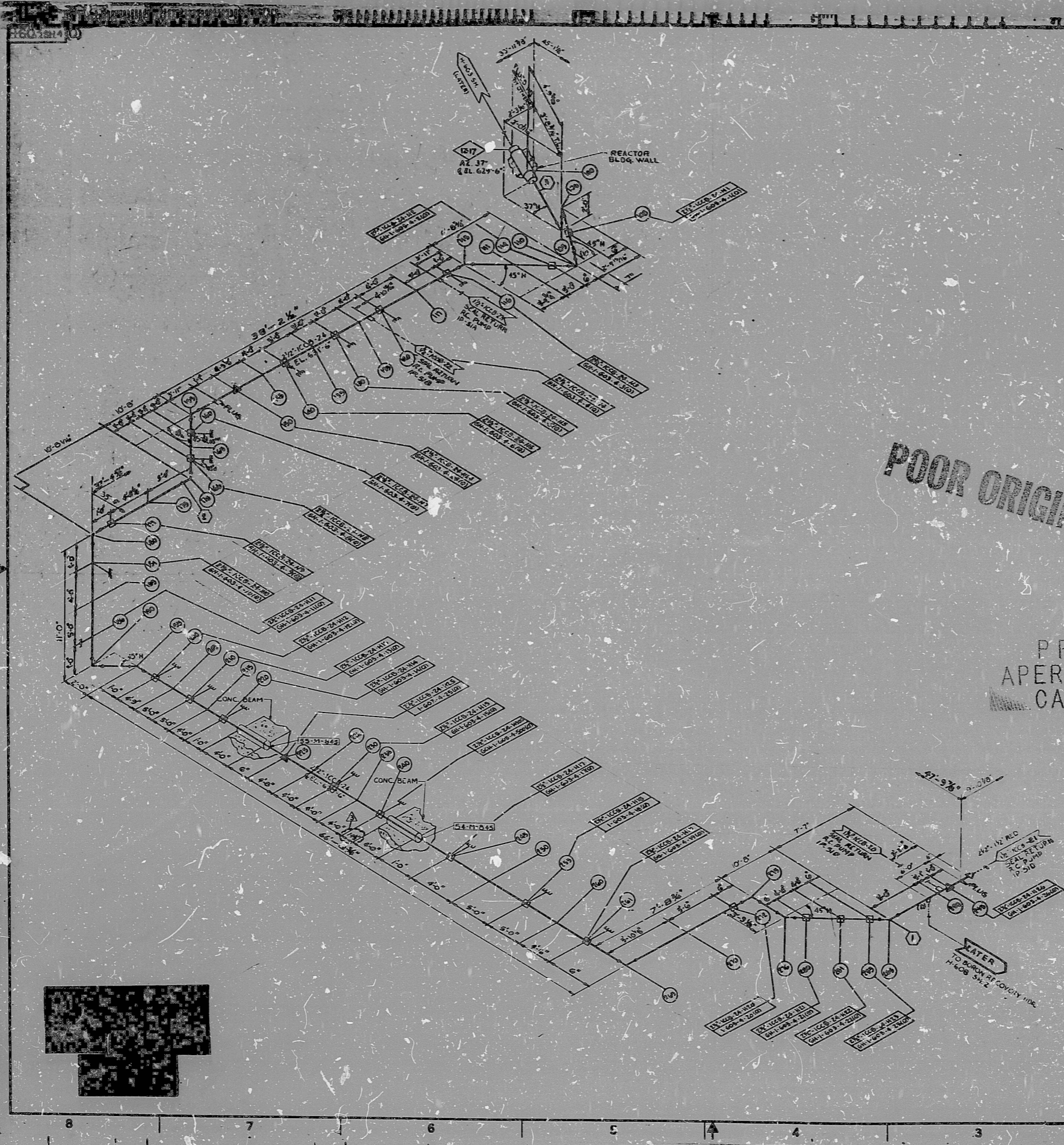


17"  
11"  
8.5"  
8.5"  
11"  
17"

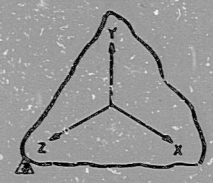
17"  
11"  
8.5"  
8.5"  
11"  
17"



POOR ORIGINAL

PRC APERTURE CARD

APPROX. L.F. 198'



- NOTE:
1. ALL PIPING IS TO BE FABRICATED AND INSTALLED IN ACCORDANCE WITH SPECIFICATIONS 1200-2-2.4
  2. FOR MATERIAL SPECIFICATIONS OF PIPE, VALVES AND FITTINGS, SEE PIPING CLASS SPECIFICATIONS IN D. OF J. AND D. OF J. 11.
  3. ALL PIPING AND EQUIPMENT SHALL BE IN ACCORDANCE WITH THE P-403 SM. 2.
  4. FOR EQUIPMENT LIST SEE M-403.
  5. FOR EQUIPMENT CONNECTIONS SEE M-403.
  6. ALL ALUMINUM AND BRASS SHALL BE ANNEALED AFTER FABRICATION AND ALL FITTINGS TO BE WORKED TO THE CORRECT POSITION BEFORE INSTALLATION IN THE REACTOR.
  7. FOR PIPING SYSTEM COMPLETE DRAWINGS SEE M-403 AND M-404.
  8. FOR EQUIPMENT LIST, SEE M-403.
  9. PIPE SHALL BE SUPPORTED WITH RIGID AND FLEXIBLE CONNECTIONS AT SPACES OF FIVE (5) FEET THE MAXIMUM PIPE SPACING.
  10. PIPE VERTICAL AND HORIZONTAL SPACING SHALL BE M-403 THESE NOTES.
  11. FLEXIBLE SUPPORTS WHERE SPECIFICALLY REQUIRED ARE INDICATED BY (F).
  12. FOR WEIGHTS AND DIMENSIONS SEE M-403. WEIGHTS AND DIMENSIONS ARE INDICATED BY (W) AND (D).
  13. ALL PIPING TO BE INSTALLED TO THE TOP OF REACTOR WALLS AND TO THE TOP OF ALL TANKS TO BE INSTALLED IN THE REACTOR.
  14. INDICATES REACTOR BUILDING PENETRATION.
  15. INDICATES FLOOR OR WALL PENETRATION.
  16. INDICATES PENETRATION TO REACTOR BLDG. SOUTH-SOUTH AND SOUTH-NORTH WALL.

REFERENCE DWG'S:

- M-300 - TYPES OF FLUED HEAD FITTINGS FOR COMPARTMENT PIPING PENETRATIONS.
- M-301 - REACTOR BLDG. MECHANICAL PENETRATIONS SCHEDULE UNIT 1.

| NO. | DATE     | DESCRIPTION                  | BY           | CHKD.        |
|-----|----------|------------------------------|--------------|--------------|
| 1   | 11/15/54 | ISSUED FOR SUPPORT FAB.      | W. J. HARRIS | W. J. HARRIS |
| 2   | 11/15/54 | REVISIONS TO PIPING OF M-403 | W. J. HARRIS | W. J. HARRIS |
| 3   | 11/15/54 | REVISIONS TO PIPING OF M-403 | W. J. HARRIS | W. J. HARRIS |
| 4   | 11/15/54 | REVISIONS TO PIPING OF M-403 | W. J. HARRIS | W. J. HARRIS |
| 5   | 11/15/54 | REVISIONS TO PIPING OF M-403 | W. J. HARRIS | W. J. HARRIS |
| 6   | 11/15/54 | REVISIONS TO PIPING OF M-403 | W. J. HARRIS | W. J. HARRIS |
| 7   | 11/15/54 | REVISIONS TO PIPING OF M-403 | W. J. HARRIS | W. J. HARRIS |
| 8   | 11/15/54 | REVISIONS TO PIPING OF M-403 | W. J. HARRIS | W. J. HARRIS |

**OSCENTEL**  
 AND ASSOC. ENGINEERS  
 MIDLAND PLANT UNITS 1 & 2  
 COMBUSTION POWER COMPANY  
 HANGER SECTION  
 MAKE-UP AND PURIFICATION  
 SYSTEM UNIT-1  
 PUMP SEAL DE. 10.11

|      |               |
|------|---------------|
| 7220 | H-603 SH4Q. 3 |
|------|---------------|

RIDS

8302140210

