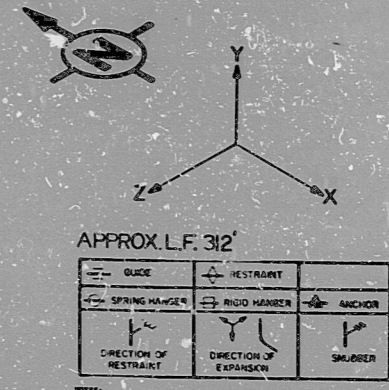
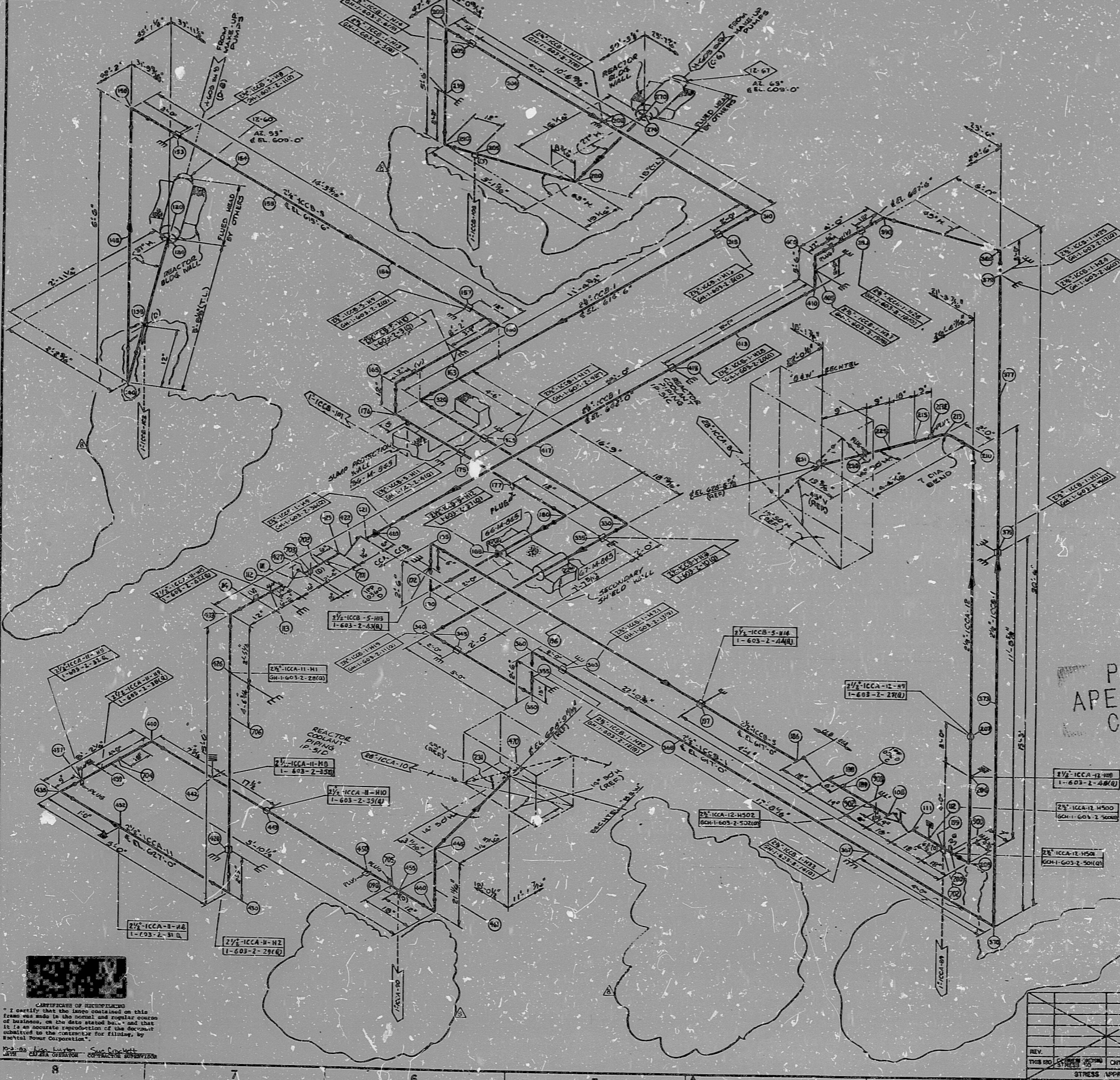


H-603 SH.2 (Q)



- NOTES:
1. ALL PIPING TO BE FABRICATED AND ERECTED IN ACCORDANCE WITH SPECIFICATIONS 7210-M-208.
 2. FOR MATERIAL SPECIFICATION OF PIPE, VALVES AND FITTINGS, SEE PIPING CLASS SPECIFICATIONS, DIVISION 5, PART 5.4.0.
 3. FOR PIPING AND FITTINGS DIMENSIONS, SEE DIVISION 5, PART 5.4.0.
 4. FOR EQUIPMENT LIST, SEE M-403.
 5. FOR INSTRUMENT CONNECTIONS, SEE DRAWING M-403.
 6. NO ALLOWANCE HAS BEEN MADE FOR WELD JOINTS OR GALVANIC AND ALL PIPING IS TO BE WELDED TO THE COLD DUCTED PORTION UNLESS OTHERWISE NOTED ON THE DRAWING.
 7. THE PIPING SYSTEM COMPLETE (EXCEPTED) SHALL BE AS SHOWN SEE M-403, M-404, M-405.
 8. PIPING IS TO BE WELDED TO THE WALL, SEE M-403.
 9. PIPE SHALL BE WELDED TO THE WALL WITH A WELDING CONTROLLING BOARD OF TYPE (3) TIMES THE NOMINAL PIPE DIAMETER.
 10. PIPING AND INSTRUMENT SYMBOLS SEE PAGE M-400 THROUGH M-402.
 11. WELD JOINTS SHALL BE SPECIFICALLY IDENTIFIED AND INDICATED (S, W).
 12. FOR WELD JOINTS SEE DRAWING M-403, WELD JOINTS AND INDICATION (S, W) AND (3).
 13. ALL PIPING TO BE WELDED TO THE WALL OF REACTOR BLDG WALL AND THE WALL SHALL BE WELDED TO THE WALL.
 14. THE REACTOR BLDG WALL SHALL BE WELDED TO THE WALL.
 15. INDICATES FLANGE OR WALL PENETRATION.
 16. INDICATES PENETRATION TO REACTOR BLDG WALL, BOTTOM-DOORS AND EAST-WEST WALL.
 17. DIMENSIONS SHOWN ON THIS DRAWING ARE TO BE USED FOR THE WALL WHICH IS TO BE CONSTRUCTED.

REFERENCES DWGS:
 M-300 TYPES OF FLUED HEAD FITTINGS FOR CONTAINMENT PIPING PENETRATIONS.
 M-501 REACTOR BLDG. MECHANICAL PENETRATION SCHEDULE.

PRC APERTURE CARD

DESIGN CALCULATION REFERENCE:

REV	NO	DESCRIPTION
1	1	SC-3603-100
2	1	SC-3603-100
3	1	SC-3603-100
4	1	SC-3603-100
5	1	SC-3603-100
6	1	SC-3603-100
7	1	SC-3603-100
8	1	SC-3603-100
9	1	SC-3603-100
10	1	SC-3603-100

POOR ORIGINAL

REV	NO	DESCRIPTION	DATE
1	1	ISSUE FOR SUPPORT FAB	11/1/52
2	1	ISSUE FOR SUPPORT FAB	11/1/52
3	1	ISSUE FOR SUPPORT FAB	11/1/52
4	1	ISSUE FOR SUPPORT FAB	11/1/52
5	1	ISSUE FOR SUPPORT FAB	11/1/52
6	1	ISSUE FOR SUPPORT FAB	11/1/52
7	1	ISSUE FOR SUPPORT FAB	11/1/52
8	1	ISSUE FOR SUPPORT FAB	11/1/52
9	1	ISSUE FOR SUPPORT FAB	11/1/52
10	1	ISSUE FOR SUPPORT FAB	11/1/52

DECHELT
 400 4000, BICHICO

WINDLAND PLANT UNITS 1 & 2
 CONSOLIDATED POWER COMPANY

HANGER SYSTEM
 MAKE UP AND PURIFICATION
 SYSTEM UNIT-1
 (REACTOR BLDG. W.P. HANGERS)

REV	NO	DESCRIPTION	DATE
1	1	ISSUE FOR SUPPORT FAB	11/1/52
2	1	ISSUE FOR SUPPORT FAB	11/1/52
3	1	ISSUE FOR SUPPORT FAB	11/1/52
4	1	ISSUE FOR SUPPORT FAB	11/1/52
5	1	ISSUE FOR SUPPORT FAB	11/1/52
6	1	ISSUE FOR SUPPORT FAB	11/1/52
7	1	ISSUE FOR SUPPORT FAB	11/1/52
8	1	ISSUE FOR SUPPORT FAB	11/1/52
9	1	ISSUE FOR SUPPORT FAB	11/1/52
10	1	ISSUE FOR SUPPORT FAB	11/1/52

CERTIFICATE OF REPRODUCTION
 I certify that the copy contained on this form was made in the normal and regular course of business, on the date stated hereon, and that it is an accurate reproduction of the document submitted to the contractor for filing, by the Nuclear Power Corporation.

17"
 11"
 8.5"
 11"
 8.5"
 17"

17"
 11"
 8.5"
 11"
 8.5"
 17"

RIDS

8302140205

