

For General Notes, See 0-10-3-P

**LEGEND**

MECHANICAL SYSTEM

ELECTRICAL SYSTEM

LOAD DROP AREA

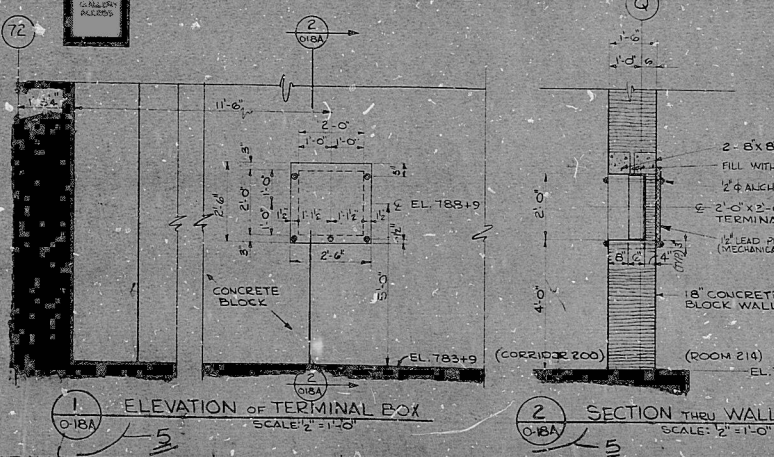
TERA APERTURE CARD

**COATING SCHEDULE-AUXILIARY BLDG. EL.783+9**

ROOM NUMBER	AREA	FLOOR	WALL	MINI-COAT	CELLING
200A	CORRIDOR	310-1	310	310-1	310
200A	STAIR	310	310	310	310
200B	STAIR	310	310	310	310
201	ROOM	310	310	---	310
202	STAIR	310	310	---	310
202A	ELEVATOR LOBBY	310	310	310	310
202A	STAIR	310	310	310	310
202B	(SEE UNIT 0-0-108)	---	---	---	---
202B	(SEE UNIT 0-0-108)	---	---	---	---
204	STORAGE	310	310	---	310
205	STAIR AREA	310-1	310	310-1	310
206	PIPE ROOM	310	310	---	310
207	CHEMICAL HANDLING / STORAGE	310-2	310	---	310
208	PIPE ROOM	310	310	---	310
209	LABS AND REAG. BUILDING	310	310	---	310
210	WASTE OIL COMPRESSORS	310	310	---	310
211	REACTOR COOLANT SYSTEM PUMP TANK	310	310	---	310
212	CORRIDOR	310-1	310	310-1	310
213	DOWN DRAIN HATCH AREA	310-1	310	---	310

**COATING SCHEDULE-AUXILIARY BLDG. EL.783+9**

ROOM NUMBER	AREA	FLOOR	WALL	MINI-COAT	CELLING
215	LET-DOWN FILTER HATCH AREA	310-1	310	---	310
216	R.B. COMPONENT COOLER	310	310	---	310
217	PIPE ROOM	310	310	---	310
218	SPENT FUEL COOLER AREA	310-2	310	---	310
219	SPENT FUEL COOLANT FILTERS	310-2	310	---	310
220	INSTRUMENT MAINTENANCE	310	310	---	310
221	REACTOR BLEED SWAP FEED TANK	310	310	---	310
222	PIPE ROOM	310	310	---	310
223	STAIR AREA	310-1	310	310-1	310
224	STORAGE	310	310	---	310
225	UNASSIGNED	310	310	---	310



2 - 6x6 CONCRETE LINTELS (FINISH IN FIELD)  
 FILL WITH GROUT BETWEEN LINTELS  
 2-4 ALUMINUM BOLT (FINISH IN FIELD)  
 2 - 2"x2"x4" G-6 TERMINAL BOX  
 1/2\"/>

**REFERENCE DWGS.**

CONCRETE PLAN AT EL. 783+9 0-155A & 0-155B  
 FLOOR BEAM LAYOUT 0-151  
 PIPING LAYOUT PLAN 0-157A & 0-157B  
 LIGHTING LAYOUT 0-161  
 ELECTRICAL EQUIPMENT LAYOUT 0-164 & 0-165A

**O.A. CONDITION 1**  
 BLOCK WALL TYPE F ONLY

**NOTES:**  
 1. WORK THIS DWG. WITH DWG. 0-18B  
 2. SYMBOL TRUSS ( ) INDICATES BLOCK WALL  
 THESE REFER TO DWG. 0-201B FOR WALL TYPE DESIGNATIONS.

DUKE POWER COMPANY  
 OCONEE NUCLEAR STATION UNITS 1&2  
 GENERAL ARRANGEMENT  
 AUXILIARY BUILDING  
 PLAN-EL. 783+9  
 SAFE LOAD PATHS

NO.	REVISION	DATE



RIDS

8109220550

