

HP MAGNETIC FILTER OF-80	LP MAGNETIC FILTER OF-81A	LP MAGNETIC FILTER OF-81B	LP MAGNETIC FILTER OF-81C	LP MAGNETIC FILTER OF-81D
OC-9281A	OC-9281A	OC-9281B	OC-9281C	OC-9281D
OC-9282A	OC-9282A	OC-9282B	OC-9282C	OC-9282D
OC-9283A	OC-9283A	OC-9283B	OC-9283C	OC-9283D
OC-9284A	OC-9284A	OC-9284B	OC-9284C	OC-9284D
OC-9285A	OC-9285A	OC-9285B	OC-9285C	OC-9285D
OC-9286A	OC-9286A	OC-9286B	OC-9286C	OC-9286D
OC-9287A	OC-9287A	OC-9287B	OC-9287C	OC-9287D
OC-9288A	OC-9288A	OC-9288B	OC-9288C	OC-9288D
OC-9289A	OC-9289A	OC-9289B	OC-9289C	OC-9289D
OC-9290A	OC-9290A	OC-9290B	OC-9290C	OC-9290D
OC-9291A	OC-9291A	OC-9291B	OC-9291C	OC-9291D
OC-9292A	OC-9292A	OC-9292B	OC-9292C	OC-9292D
OC-9293A	OC-9293A	OC-9293B	OC-9293C	OC-9293D
OC-9294A	OC-9294A	OC-9294B	OC-9294C	OC-9294D
OC-9295A	OC-9295A	OC-9295B	OC-9295C	OC-9295D
OC-9296A	OC-9296A	OC-9296B	OC-9296C	OC-9296D
OC-9297A	OC-9297A	OC-9297B	OC-9297C	OC-9297D
OC-9298A	OC-9298A	OC-9298B	OC-9298C	OC-9298D
OC-9299A	OC-9299A	OC-9299B	OC-9299C	OC-9299D
OC-9300A	OC-9300A	OC-9300B	OC-9300C	OC-9300D

- NOTES:
1. STAGGS FOR MAGNETIC COIL.
 2. MAGNETIC COIL COOLING SYSTEM: INSTRUMENT TANKS SHOULD BE IN SYSTEM IS TYPICAL FOR ALL G MAGNETIC FILTER COILS & COOLING JETS AND IS TYPICAL. SEE VENDOR DATA FOR COOLING UNIT DETAILS.
 3. EACH MAGNETIC COIL HAS FOUR STAGGS BENCHMOUNTED TO THE COIL. BENCHMOUNTING IS USED WHILE THE OTHER THREE STAGGS ARE SPARES.
 4. STATUS LIGHTS FOR FILTER SH-READ VALVES OC-9281A & OC-9281B ARE ON OC-270.
 5. TYPICAL INSTRUMENTATION AS FOR OC-44A. SEE ADAPTER TABLE FOR INSTRUMENT NUMBERS.
 6. COMMON ALARMS FOR OC-348A & OC-348B ARE LOCATED AT CONTROL PANEL OC-470.
 7. BUTTERFLY VALVE CONTROL DETAIL TYPE FOR VALVES IN THIS SECTION SUPPLIED.

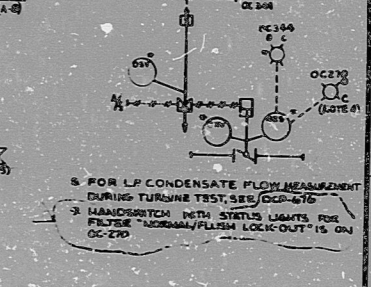
VALVE # LIGHT SOLIDLINE CONTROL

031	OV-9256	OV-9256	OV-9256	OC-344B
032	OV-9257	OV-9257	OV-9257	OC-344B
033	OV-9258	OV-9258	OV-9258	OC-344A
034	OV-9259	OV-9259	OV-9259	OC-344A
035	OV-9260	OV-9260	OV-9260	OC-344A
036	OV-9261	OV-9261	OV-9261	OC-344A
037	OV-9262	OV-9262	OV-9262	OC-344A
038	OV-9263	OV-9263	OV-9263	OC-344A
039	OV-9264	OV-9264	OV-9264	OC-344A
040	OV-9265	OV-9265	OV-9265	OC-344A
041	OV-9266	OV-9266	OV-9266	OC-344A
042	OV-9267	OV-9267	OV-9267	OC-344A
043	OV-9268	OV-9268	OV-9268	OC-344A
044	OV-9269	OV-9269	OV-9269	OC-344A
045	OV-9270	OV-9270	OV-9270	OC-344A
046	OV-9271	OV-9271	OV-9271	OC-344A
047	OV-9272	OV-9272	OV-9272	OC-344A
048	OV-9273	OV-9273	OV-9273	OC-344A
049	OV-9274	OV-9274	OV-9274	OC-344A
050	OV-9275	OV-9275	OV-9275	OC-344A

TUBING DESCRIPTION

LINE #	TUBING DESCRIPTION
VE-YDD-21	H.P. FILTER (OF-80) MAGNETIC COIL COOLING INLET TUBING
VE-YDD-22	H.P. FILTER (OF-80) MAGNETIC COIL COOLING OUTLET TUBING
VE-YDD-23	L.P. FILTER (OF-81A) MAGNETIC COIL A COOLING INLET TUBING
VE-YDD-24	L.P. FILTER (OF-81A) MAGNETIC COIL A COOLING OUTLET TUBING
VE-YDD-25	L.P. FILTER (OF-81B) MAGNETIC COIL B COOLING INLET TUBING
VE-YDD-26	L.P. FILTER (OF-81B) MAGNETIC COIL B COOLING OUTLET TUBING
VE-YDD-27	L.P. FILTER (OF-81C) MAGNETIC COIL C COOLING INLET TUBING
VE-YDD-28	L.P. FILTER (OF-81C) MAGNETIC COIL C COOLING OUTLET TUBING
VE-YDD-29	L.P. FILTER (OF-81D) MAGNETIC COIL D COOLING INLET TUBING
VE-YDD-30	L.P. FILTER (OF-81D) MAGNETIC COIL D COOLING OUTLET TUBING

PRO APERTURE CARD



BECHTEL
180 15TH AVENUE

MIDLAND PLANT UNITS 1 & 2
CONDENSERS POWER COMPANY
PIPING AND INSTRUMENT DIAGRAM
TURBINE EXTRACTION
STEAM TO EVAPORATORS

DES. NO.	7220
REVISION NO.	M-460 S44
REV.	7

DATE: 11/10/54
DRAWN BY: [Name]
CHECKED BY: [Name]
APPROVED BY: [Name]

DETAIL 1
FOR IDENTIFICATION OF COMPONENTS
SEE LIST IN ZONE A-24-A-3

CERTIFICATE OF MICROFILMING
I certify that the maps contained on this frame was made in the normal and regular course of business, on the date stated below and that it is an accurate reproduction of the document described in the certificate for filing in the Bechtel Power Corporation.

DATE: 11/10/54
OPERATOR: [Name]
CONTRACTOR SUPERVISOR: [Name]

LOCATION	(1)	(2)	(3)	(4)	(5)	(6)	(7)	(8)	(9)	(10)
A-6	182	OST-6021	-	190	OC-6022	OC-6023	OC-6024	OC-6025	OC-6026	OC-6027
A-6	183	OST-6022	-	191	OC-6023	OC-6024	OC-6025	OC-6026	OC-6027	OC-6028
A-6	184	OST-6023	-	192	OC-6024	OC-6025	OC-6026	OC-6027	OC-6028	OC-6029
A-6	185	OST-6024	-	193	OC-6025	OC-6026	OC-6027	OC-6028	OC-6029	OC-6030
A-7	187	OST-6025	-	194	OC-6026	OC-6027	OC-6028	OC-6029	OC-6030	OC-6031
A-7	188	OST-6026	-	195	OC-6027	OC-6028	OC-6029	OC-6030	OC-6031	OC-6032
A-7	189	OST-6027	-	196	OC-6028	OC-6029	OC-6030	OC-6031	OC-6032	OC-6033
A-7	190	OST-6028	-	197	OC-6029	OC-6030	OC-6031	OC-6032	OC-6033	OC-6034
A-6	189	OST-6029	-	197	OC-6030	OC-6031	OC-6032	OC-6033	OC-6034	OC-6035

RIDS

8302140138

