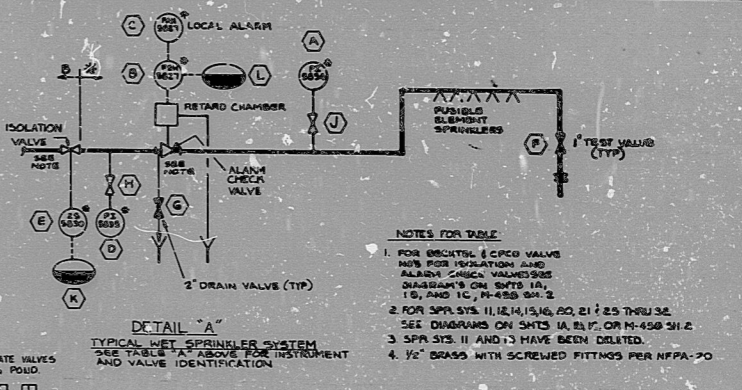


TABLE A FOR DETAIL 'A' ONLY

SPR SYS. IDENTIFICATION	VALVE IDENTIFICATION											PLANT SECURITY COMPUTER IDENTIFICATION
	A	B	C	D	E	F	G	H	J	K	L	
1	102	103	104	105	106	107	108	109	110	111	112	215
2	113	114	115	116	117	118	119	120	121	122	123	216
3	124	125	126	127	128	129	130	131	132	133	134	217
4	135	136	137	138	139	140	141	142	143	144	145	218
5	146	147	148	149	150	151	152	153	154	155	156	219
6	157	158	159	160	161	162	163	164	165	166	167	220
7	168	169	170	171	172	173	174	175	176	177	178	221
8	179	180	181	182	183	184	185	186	187	188	189	222
9	190	191	192	193	194	195	196	197	198	199	200	223
10	201	202	203	204	205	206	207	208	209	210	211	224
11	212	213	214	215	216	217	218	219	220	221	222	225
12	223	224	225	226	227	228	229	230	231	232	233	226
13	234	235	236	237	238	239	240	241	242	243	244	227
14	245	246	247	248	249	250	251	252	253	254	255	228
15	256	257	258	259	260	261	262	263	264	265	266	229
16	267	268	269	270	271	272	273	274	275	276	277	230
17	278	279	280	281	282	283	284	285	286	287	288	231
18	289	290	291	292	293	294	295	296	297	298	299	232
19	300	301	302	303	304	305	306	307	308	309	310	233
20	311	312	313	314	315	316	317	318	319	320	321	234
21	322	323	324	325	326	327	328	329	330	331	332	235
22	333	334	335	336	337	338	339	340	341	342	343	236
23	344	345	346	347	348	349	350	351	352	353	354	237
24	355	356	357	358	359	360	361	362	363	364	365	238



NOTES FOR TABLE

- FOR BRASS/STAINLESS STEEL VALVES NOT FOR ISOLATION AND ALARM CHECK VALVES SEE DIAGRAMS ON SHTS 1A, 1B, AND 1C, M-458 SH-2
- FOR SPR SYS. 11, 12, 14, 15, 20, 21, 25 THROUGH 32 SEE DIAGRAMS ON SHTS 1A, 1B, 1C, M-458 SH-2
- SPR SYS. 11 AND 13 HAVE BEEN DELETED.
- 1/2" BRASS WITH SCREWED FITTINGS PER NFPA-70

LEGEND

- RAIN CAP
- DRY PIPE VALVE
- WELL POST INDICATOR VALVE
- PLANT SECURITY COMPUTER I/O

NOTES

- THOSE REEL NOS. 301-60 ARE DELETED
- BRONZE CHECK VALVES WITH 3/8" INCH ORifice DRILLED IN 3" RAIN CAP
- REMOVED IS INDICATED ON REV. SHEET M-458 SH-2
- INCORPORATED TOSH 539
- REVISED AS SHOWN
- FOR CONSTRUCTION OF THIS SYSTEM REFER TO THE RELEVANT REVISED VENTING DRAWING AND THE RELEVANT VALVE AND PIPE SCHEDULES.

PRC APERTURE CARD
30X

BECHTEL
AND ASSOCIATES

MIDLAND PLANT UNITS 1 & 2
CONSUMERS POWER COMPANY

PIPING & INSTRUMENT DIAGRAM
FIRE PROTECTION

JOB NO.	DRAWING NO.	REV.
7220	M-458 SH-1C	6

RIDS

8302140127

