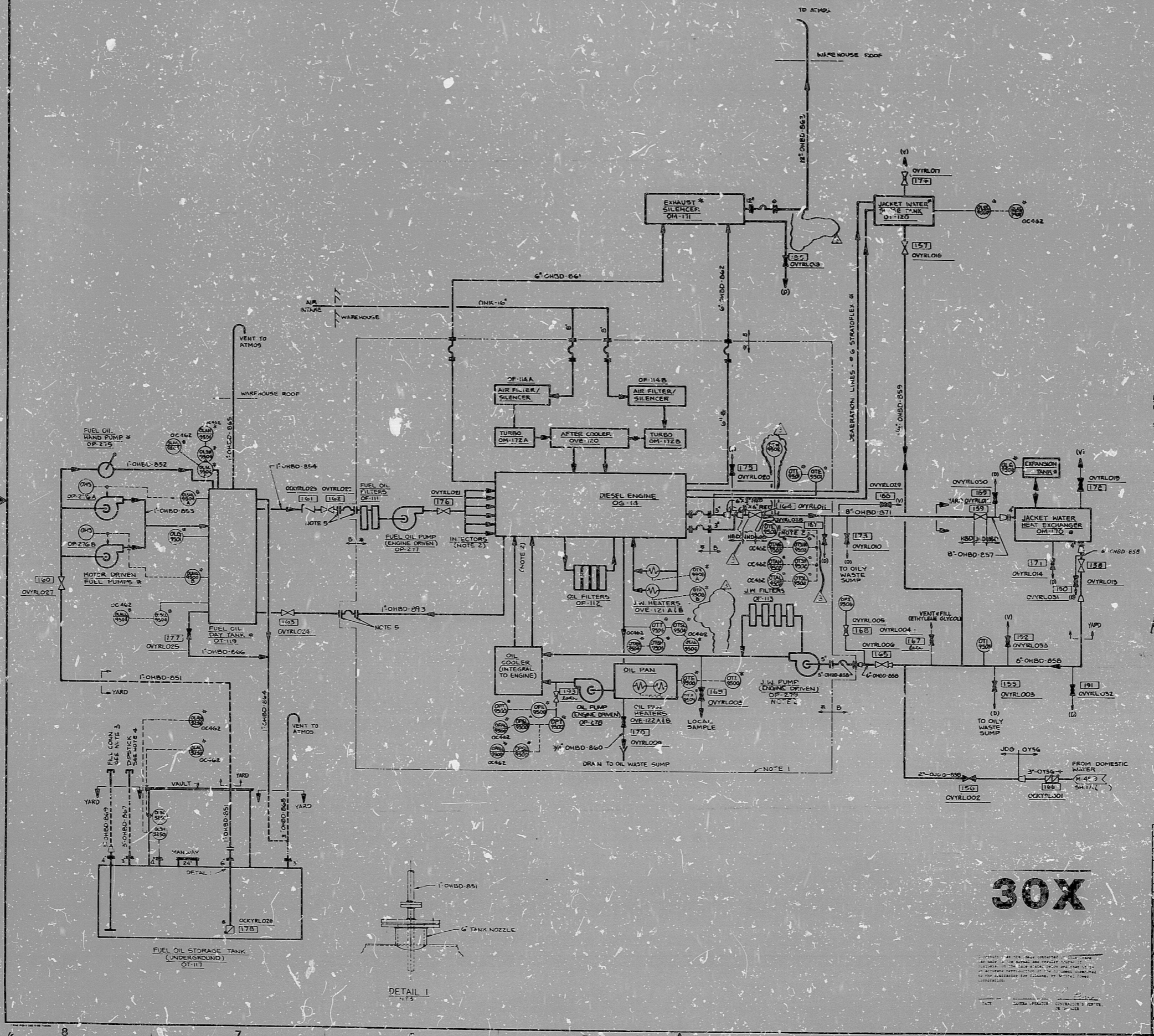


M-452 SH.2



- NOTES:
1. ALL EQUIPMENT INSIDE NOTED LINE IS ON-ENGINE AND VENDOR SUPPLIED UNLESS NOTED OTHERWISE.
  2. EQUIPMENT INTEGRAL TO ENGINE BUT SHOWN SCHEMATICALLY FOR INFORMATION.
  3. FILL CONNECTION TO BE PROVIDED WITH REMOVABLE STRAINER AND API COUPLER WITH VAPOR TIGHT LOCKABLE CAP.
  4. DIPSTICK CAP FITTING SHALL BE VAPOR TIGHT AND MAY HAVE FLANGED OR SCREWED CONNECTION.
  5. FLEXIBLE CONNECTORS HAVE SCREWED CONNECTIONS.

PRO APERTURE CARD

30X

REVISION NO.	DATE	BY	CHKD.
001	11/15/50	J. W. HARRIS	J. W. HARRIS
002	11/15/50	J. W. HARRIS	J. W. HARRIS
003	11/15/50	J. W. HARRIS	J. W. HARRIS
004	11/15/50	J. W. HARRIS	J. W. HARRIS
005	11/15/50	J. W. HARRIS	J. W. HARRIS
006	11/15/50	J. W. HARRIS	J. W. HARRIS
007	11/15/50	J. W. HARRIS	J. W. HARRIS
008	11/15/50	J. W. HARRIS	J. W. HARRIS
009	11/15/50	J. W. HARRIS	J. W. HARRIS
010	11/15/50	J. W. HARRIS	J. W. HARRIS

BECHTEL  
AND ASSOCIATES

MIDLAND PLANT UNIT 1 & 2  
CONSUMERS POWER COMPANY

PIPING & INSTRUMENT DIAGRAM  
DIESEL FUEL OIL STORAGE & TRANSFER  
YARD LIGHTING DIESEL & UPS FACILITY

REV.	DATE	BY	CHKD.
7220	M-452 SH 2	2	3

This drawing and the design it contains are the property of BECHTEL. They are loaned to you for the purpose of design and construction only. They are not to be reproduced, copied, or used in any way without the written consent of BECHTEL.

RIDS

8307100514

