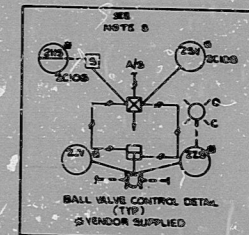


PRO APERTURE CARD



- NOTES:
1. ALL ALARMS ARE ASSOCIATED ON LOCAL CONTROL PANEL. COMMON TROUBLE ALARMS ARE RETRANSMITTED TO MAIN CONTROL BOARD ANNUNCIATOR.
 2. 2PSH-4252 INTERLOCKS WITH 2IV-4201, 4202, 4203, 4204, 4205 TO PREVENT OPENING IN THE EVENT OF HIGH SYSTEM PRESSURE. THIS PROTECTS THE LOW PRESSURE REGENERATION SYSTEM DURING THE REGENERATION PROCESS.
 3. ALL SAMPLE DRAINS COLLECTED TO A COMMON SAMPLE SINK 2K-192A.
 4. ALL SAMPLE DRAINS COLLECTED TO A COMMON SAMPLE SINK 2K-192B.
 5. 2CR-4208A, B, C, D, E, F, G, H IS A 2PEN RECORDER WITH 2 INTERNAL ALARM SWITCHES.
 6. 2CR-4214 A, B, C, D, E, F, G, H IS A 4-PEN RECORDER WITH 2 INTERNAL ALARM SWITCHES.
 7. ACTUAL MATERIAL USED FOR SAMPLE COOLERS IS 1/2" OD 4.0000 INCH NOMINAL WALL, STAINLESS STEEL TUBING.
 8. ALL DEVICES REQUIRING INSTRUMENT AIR ARE CONNECTED TO VENDOR MANIFOLDS. ALL MANIFOLDS ARE INTERCONNECTED SUCH THAT A SINGLE AIR SUPPLY WILL SERVICE ALL THE DEVICES SHOWN ON PIDS M-442A, B AND M-442A, B.

NO.	DESCRIPTION	DATE	BY
1	ISSUED FOR CONSTRUCTION	11/15/72	J. W. [unclear]
2	FOR INSTRUMENTATION	11/15/72	J. W. [unclear]
3	FOR INSTRUMENTATION	11/15/72	J. W. [unclear]
4	FOR INSTRUMENTATION	11/15/72	J. W. [unclear]
5	FOR INSTRUMENTATION	11/15/72	J. W. [unclear]
6	FOR INSTRUMENTATION	11/15/72	J. W. [unclear]
7	FOR INSTRUMENTATION	11/15/72	J. W. [unclear]
8	FOR INSTRUMENTATION	11/15/72	J. W. [unclear]
9	FOR INSTRUMENTATION	11/15/72	J. W. [unclear]
10	FOR INSTRUMENTATION	11/15/72	J. W. [unclear]

BECHTEL
 MIDLAND PLANT UNITS 1 & 2
 CONSUMERS POWER COMPANY

PIPING AND INSTRUMENT DIAGRAM
 CONDENSATE DEMINERALIZER UNIT 2

JOB NO. 7220 DRAWING NO. M 442A REV. 4

30X

RIDS

8302100494

