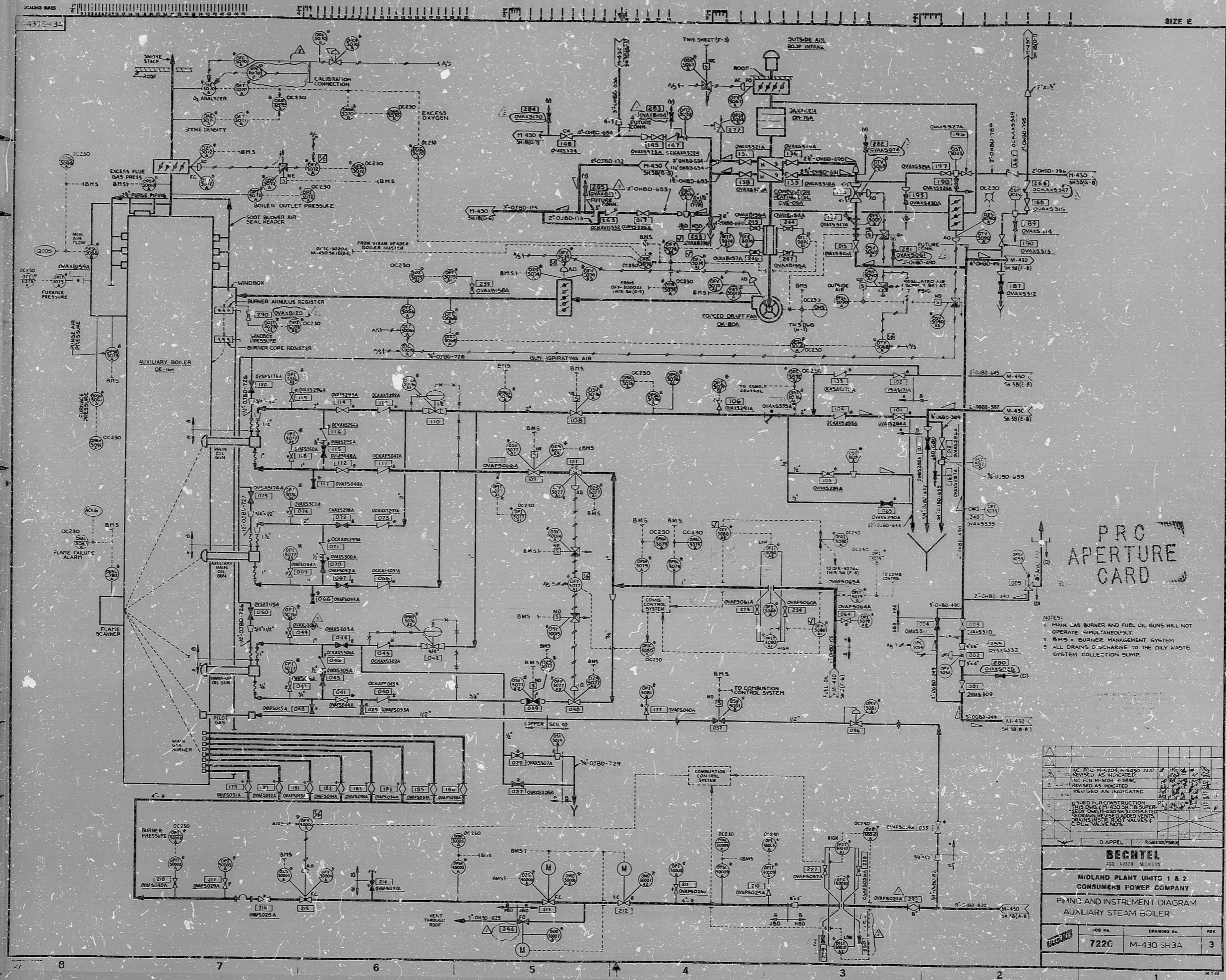


17  
11  
8.5  
8.5  
11  
17



PROC  
APERTURE  
CARD

- NOTES:
- 1. MAIN GAS BURNER AND FUEL OIL GUN WILL NOT OPERATE SIMULTANEOUSLY.
  - 2. BMS = BURNER MANAGEMENT SYSTEM
  - 3. ALL DRAINS DISCHARGE TO THE OILY WASTE SYSTEM COLLECTION SUMP.

NO.	REV.	DATE	BY	CHKD.
1				
2				
3				
4				
5				
6				
7				
8				

**BECHTEL**  
312 1802 MIAMI ST.  
MIDLAND PLANT UNITS 1 & 2  
CONSUMERS POWER COMPANY  
P&ID AND INSTRUMENT DIAGRAM  
AUXILIARY STEAM BOILER

JOB NO.	DRAWING NO.	REV.
7226	M-430 SH-3A	3

17  
11  
8.5  
8.5  
11  
17

30X



BIDS

8302090631

