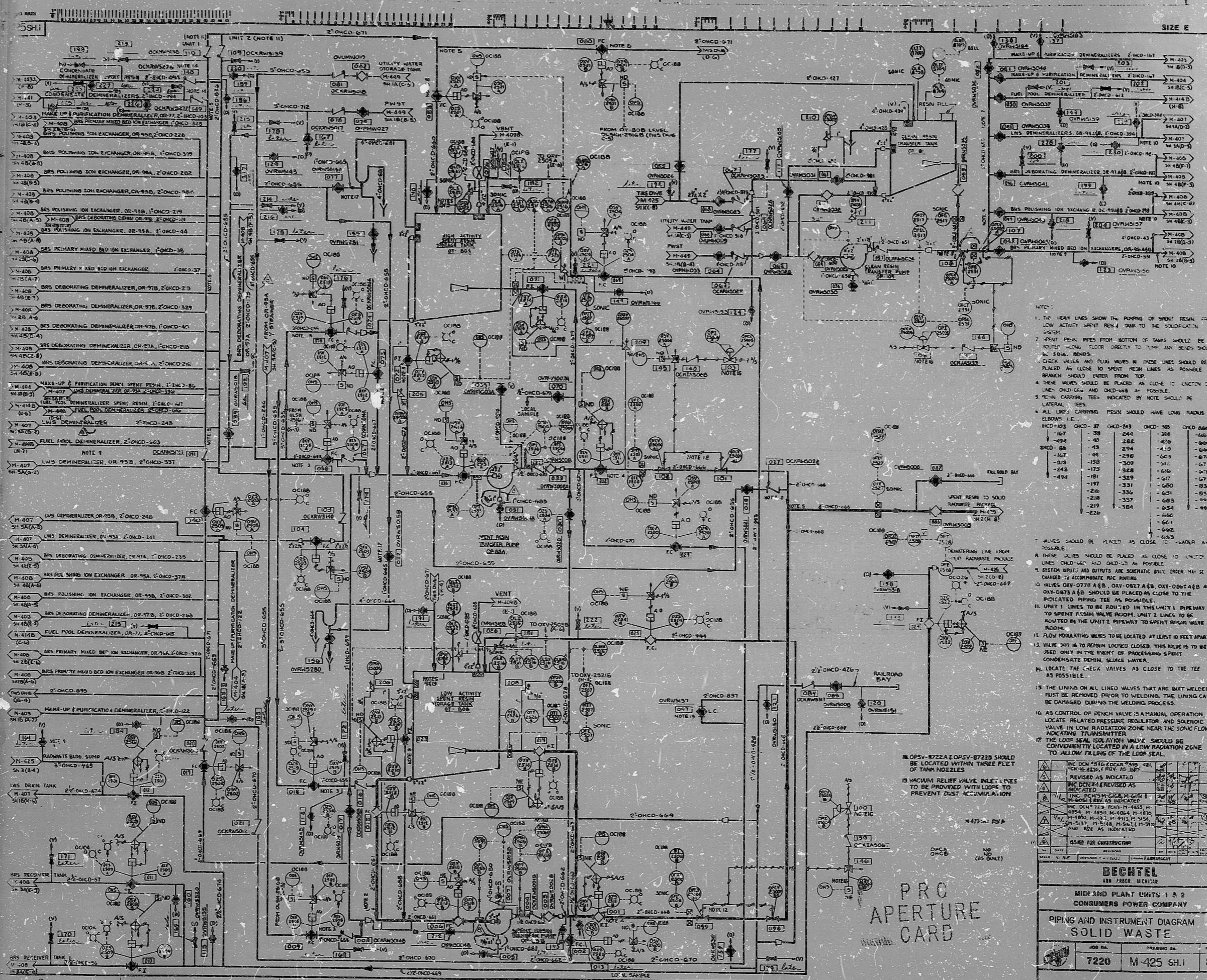


17"
11"
8.5"
8.5"
11"
17"



- NOTES:
- THE HEAVY LINES SHOW THE PLACING OF SPENT RESIN FROM LOW ACTIVITY SPENT RESIN TANK TO THE SOLIDIFICATION SYSTEM.
 - SPENT RESIN PIPES FROM BOTTOM OF TANKS SHOULD BE ROUTED ALONG FLOOR DIRECTLY TO PLANT AREA SHOULD BE IN SOLID BENCHES.
 - CHECK VALVES AND FLOW VALVES IN THESE LINES SHOULD BE PLACED AS CLOSE TO SPENT RESIN LINES AS POSSIBLE THE BRANCH SHOULD ENTER FROM TOP.
 - THESE VALVES SHOULD BE PLACED AS CLOSE TO LOCATION OF LINE ONCE-656 AND ONCE-658 AS POSSIBLE.
 - RESIN CARRYING TANKS INDICATED IN NOTE SHOULD BE LATERAL TANKS.
 - ALL LINES CARRYING RESIN SHOULD HAVE LOW RADIATION LEVELS: 1.0 R/hr
- | ONCE-656 | ONCE-657 | ONCE-658 | ONCE-659 | ONCE-660 |
|----------|----------|----------|----------|----------|
| -167 | -38 | -244 | -394 | -647 |
| -494 | -40 | -282 | -420 | -640 |
| -86 | -43 | -294 | -410 | -649 |
| -167 | -44 | -298 | -403 | -670 |
| -218 | -158 | -309 | -512 | -671 |
| -248 | -173 | -328 | -616 | -678 |
| -494 | -181 | -338 | -647 | -679 |
| | -197 | -351 | -680 | -684 |
| | -216 | -336 | -631 | -657 |
| | -218 | -337 | -683 | -693 |
| | -219 | -384 | -654 | -694 |
| | -224 | | -641 | -695 |
| | | | -642 | |
| | | | -653 | |
- VALVES SHOULD BE PLACED AS CLOSE TO LEADER AS POSSIBLE.
 - THESE VALVES SHOULD BE PLACED AS CLOSE TO LOCATION OF LINES ONCE-656 AND ONCE-658 AS POSSIBLE.
 - SYSTEM INPUT AND OUTPUTS ARE SOBERIC ONLY. OTHER INPUTS SHOULD BE ACCOMPANIED BY SOBERIC.
 - VALVES ONCE-656, ONCE-657, ONCE-658, ONCE-659, ONCE-660 AND ONCE-661 SHOULD BE PLACED AS CLOSE TO THE INDICATED PIPING AS POSSIBLE.
 - UNIT 1 LINES TO BE ROUTED IN THE UNIT 1 PIPEWAY TO SPENT RESIN WASTE ROOM. UNIT 2 LINES TO BE ROUTED IN THE UNIT 2 PIPEWAY TO SPENT RESIN WASTE ROOM.
 - FLOW MODULATING VALVES TO BE LOCATED AT LEAST 10 FEET PART.
 - VALVE 297 IS TO REMAIN LOCKED CLOSED. THIS VALVE IS TO BE USED ONLY IN THE EVENT OF PROCESSING SPENT CONDENSATE DRAIN, SLUDGE WATER.
 - LOCATE THE CHECK VALVES AS CLOSE TO THE TEE AS POSSIBLE.
 - THE LINING ON ALL LINE VALVES THAT ARE BUTT WELDED MUST BE REMOVED PRIOR TO WELDING. THE LINING CAN BE DAMAGED DURING THE WELDING PROCESS.
 - AS CONTROL OF PINCH VALVE IS A MANUAL OPERATION, LOCATE RELATED PRESSURE REGULATOR AND SOBERIC VALVE IN LOW RADIATION ZONE NEAR THE SOBERIC INDICATING TRANSMITTER.
 - THE LOOP SEAL SOLIDIFYING VALVE SHOULD BE CONVENIENTLY LOCATED IN A LOW RADIATION ZONE TO ALLOW FILLING OF THE LOOP SEAL.

REV	DATE	DESCRIPTION	BY	CHKD
1		ISSUED FOR CONSTRUCTION		

BECHTEL
ANN ARBOR, MICHIGAN

MID AND PLANT UNITS 1 & 2
CONSUMERS POWER COMPANY

PIPING AND INSTRUMENT DIAGRAM
SOLID WASTE

JOB NO.	DRAWING NO.	REV.
7220	M-425 SH.1	8

PRO
APERTURE
CARD

30X

SIZE E
H
G
F
E
D
C
B
A

17"
11"
8.5"
8.5"
11"
17"

RIDS

8302090616

