

11

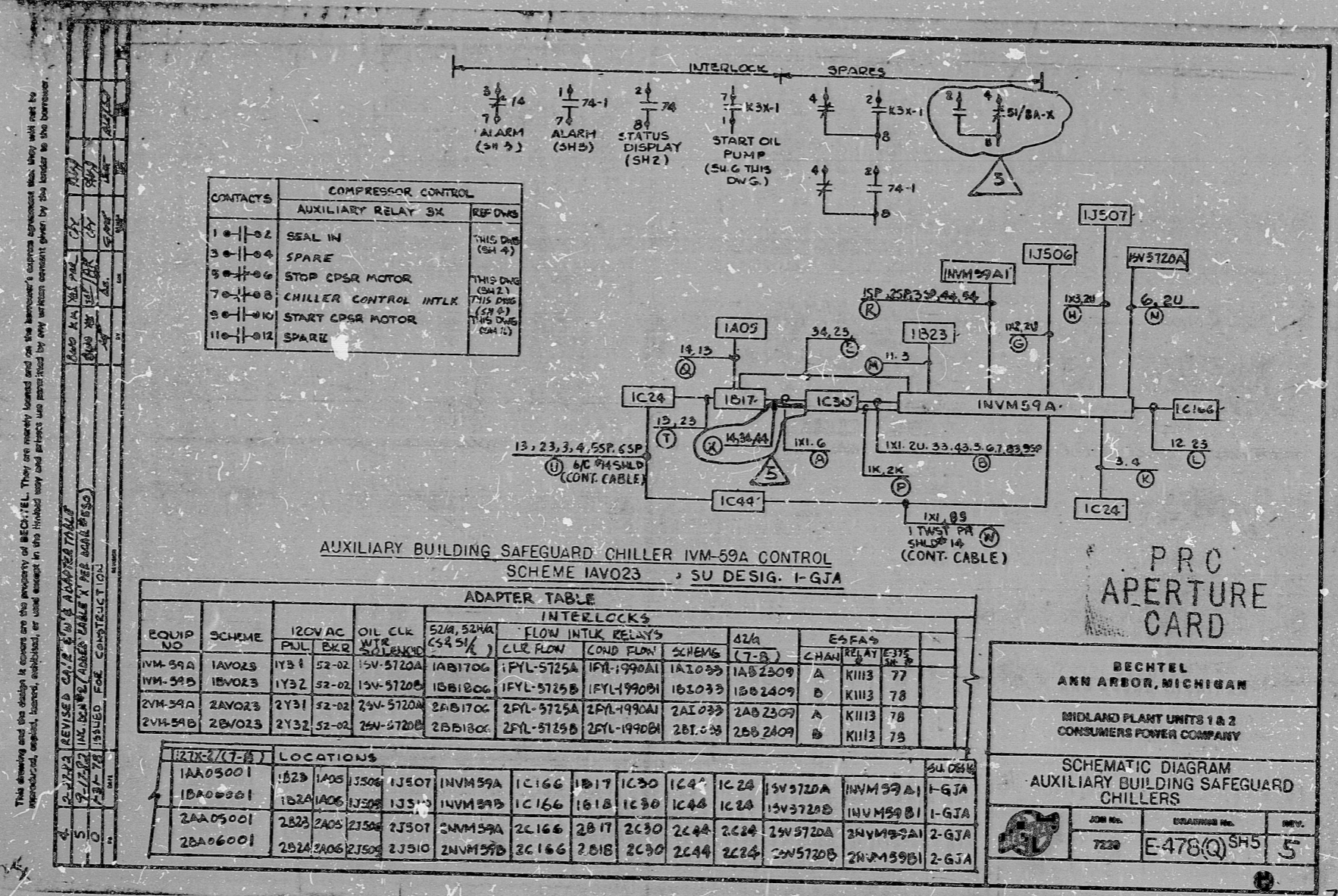
11

8.5

11

11

8.5



This drawing and the design it covers are the property of BECHTEL. They are hereby loaned and on the borrower's express agreement they will not be reproduced, copied, loaned, exhibited, or used except in the limited way and subject to any written consent given by the lender to the borrower.
 2-21-82 REVISED CHILLER ADAPTER TABLE
 2-21-82 INCL. ADAPTER TABLE X THE MAIN PAGES
 2-21-82 ISSUED FOR CONSTRUCTION

I certify that the image contained on this frame was made in the normal and regular course of business, on the date stated below and that it is an accurate reproduction of the document submitted to the contractor for filing, by Bechtel Power Corporation.
 7-21-82 C. Clavette
 DATE CAMERA OPERATOR CONTRACTOR'S SUPERVISOR OR MANAGER

16X

8.5

11

17

8.5

11

17

RIDS

8302090328

