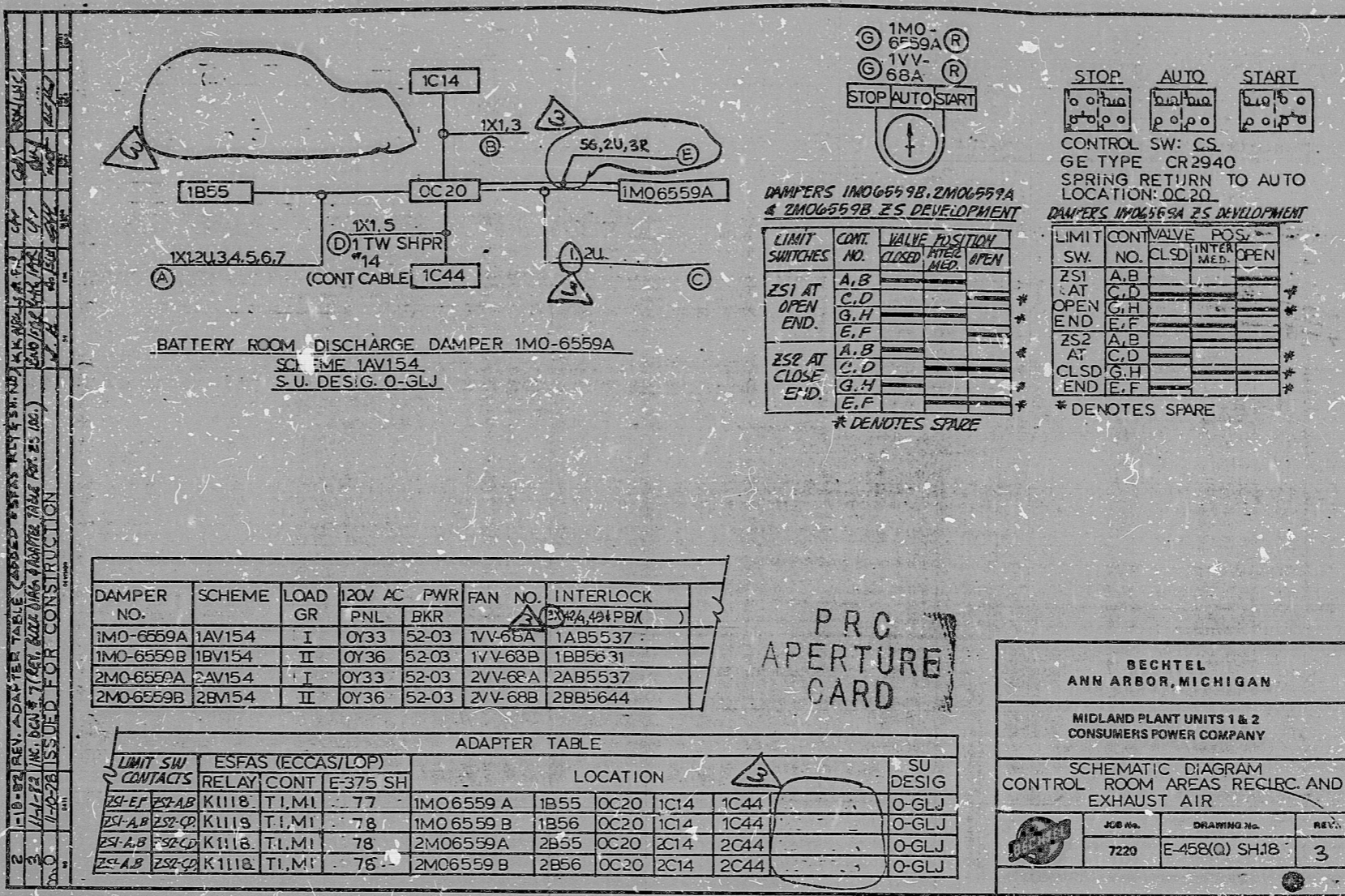


This drawing and the design it covers are the property of BECHTEL. They are loaned and on the borrower's express agreement that they will not be reproduced, copied, loaned, exhibited, or used except in the limited way and please use permitted by any written consent given by the lender to the borrower.



BATTERY ROOM DISCHARGE DAMPER 1M0-6559A
 S.U. DESIG. 1AV154
 S.U. DESIG. O-GLJ

1M0-6559A
 1V1-68A
 STOP AUTO START

STOP	AUTO	START
0 0 0 0	0 0 0 0	0 0 0 0
0 0 0 0	0 0 0 0	0 0 0 0

CONTROL SW: CS
 GE TYPE CR2940
 SPRING RETURN TO AUTO
 LOCATION: OC20

DAMPERS 1M06559B, 2M06559A & 2M06559B ZS DEVELOPMENT

LIMIT SWITCHES	CONT. NO.	VALVE POSITION	
		CLOSED	INTERMEDIATE OPEN
ZS1 AT OPEN END	A, B		
	C, D		
	G, H		
	E, F		
ZS2 AT CLOSE END	A, B		
	C, D		
	G, H		
	E, F		

* DENOTES SPARE

DAMPER NO.	SCHEME	LOAD GR	120V AC PNL	PWR BKR	FAN NO.	INTERLOCK
1M0-6559A	1AV154	I	0Y33	52-03	1V1-68A	1AB5537
1M0-6559B	1BV154	II	0Y36	52-03	1V1-68B	1BB5631
2M0-6559A	2AV154	I	0Y33	52-03	2V1-68A	2AB5537
2M0-6559B	2BV154	II	0Y36	52-03	2V1-68B	2BB5644

PRC
 APERTURE
 CARD

ADAPTER TABLE

LIMIT SW CONTACTS	ESFAS RELAY	(ECCAS/LOP) CONT	E-375 SH	LOCATION				SU DESIG		
ZS1-EF	ZS1-AB	K1118	T1, M1	77	1M06559A	1B55	OC20	1C14	1C44	O-GLJ
ZS1-AB	ZS2-CD	K1119	T1, M1	78	1M06559B	1B56	OC20	1C14	1C44	O-GLJ
ZS1-AB	ZS2-CD	K1118	T1, M1	78	2M06559A	2B55	OC20	2C14	2C44	O-GLJ
ZS1-AB	ZS2-CD	K1118	T1, M1	76	2M06559B	2B56	OC20	2C14	2C44	O-GLJ

BECHTEL
 ANN ARBOR, MICHIGAN

MIDLAND PLANT UNITS 1 & 2
 CONSUMERS POWER COMPANY

SCHEMATIC DIAGRAM
 CONTROL ROOM AREAS RECIRC AND EXHAUST AIR

JOB No.	DRAWING No.	REV.
7220	E-458(Q) SH18	3

KIDS

8302090299

