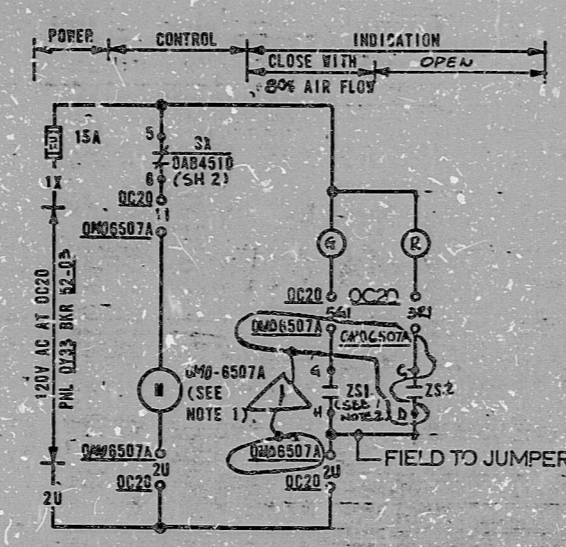


The drawings and the design of them are the property of BECHTEL. They are made, issued and on the borrower's express agreement that they will not be reproduced, copied, loaned, exhibited or otherwise used in any manner without the written consent given by the issuer to the borrower.

11-2-62	11-2-62	11-2-62	11-2-62	11-2-62	11-2-62	11-2-62	11-2-62	11-2-62	11-2-62
11-2-62	11-2-62	11-2-62	11-2-62	11-2-62	11-2-62	11-2-62	11-2-62	11-2-62	11-2-62



CONTROL ROOM RECIRCULATING AIR FILTER FAN OVVO3A BYPASS DAMPER OMO-6507A
 SCHEME 04V011
 SU DESIG O-CLH

DEVICE TABLE
 FU: FUSE (BUSS M/N, 15A)

DAMPER NO	SCHEME NO	120V AC PNL	RECIRC FAN INTLK BKR	LOAD GROUP	DAMPER CONT. ZS1 ZS2	LOCATIONS
OMO-6507A	04V011	0Y33	52-05	04B4510	I	8, H C, D QC20 OMO6507A
OMO-6507B	08V011	0Y36	52-05	08B4610	II	C, D A, B QC20 OMO6507B

PRC APERTURE CARD

LIMIT SW.	CONT. NO.	VALVE POSITION	
		CLOSED	INTER-MED OPEN
ZS1 AT OPEN END (CW)	A, B C, D G, H E, F		
ZS2 AT CLOSE END (CCW)	A, B C, D G, H E, F		

* DENOTES SPARE

LIMIT SWITCHES	CONT. NO.	VALVE POSITION	
		CLOSED	INTER-MED OPEN
ZS1 AT OPEN END (CW)	A, B C, D G, H E, F		
ZS2 AT CLOSE END (CCW)	A, B C, D G, H E, F		

* DENOTES SPARE

- NOTES
- 120V AC MOTOR OPERATOR - ENERGIZE TO FULLY OPEN DEENERGIZE TO CLOSE 20% FIELD TO ADJUST OPERATOR AND/OR DAMPER TO CLOSE POSITION ALLOWING 80% AIR FLOW.
 - POSITION CONTACT INDICATING CLOSED POSITION BUT STILL ALLOWING 80% AIR FLOW THROUGH DAMPER.
 - THE INDICATING LIGHTS FOR THE RECIRC FAN BYPASS DAMPER ARE MOUNTED ABOVE THE ASSOCIATED RECIRC FAN CS. SEE SH.2

REFERENCES:
 V.P. 7220 M347-68, 94

BECHTEL ANN ARBOR, MICHIGAN		
MIDLAND PLANT UNITS 1 & 2 CONSUMERS POWER COMPANY		
SCHEMATIC DIAGRAM CONTROL ROOM AREAS RECIRC & EXHAUST AIR		
JOB No. 7220	DRAWING No. E-4-8(Q) SH.5	REV. 1

RIDS

8302990283

