

17"

11"

8.5"

8.5"

11"

17"

17"

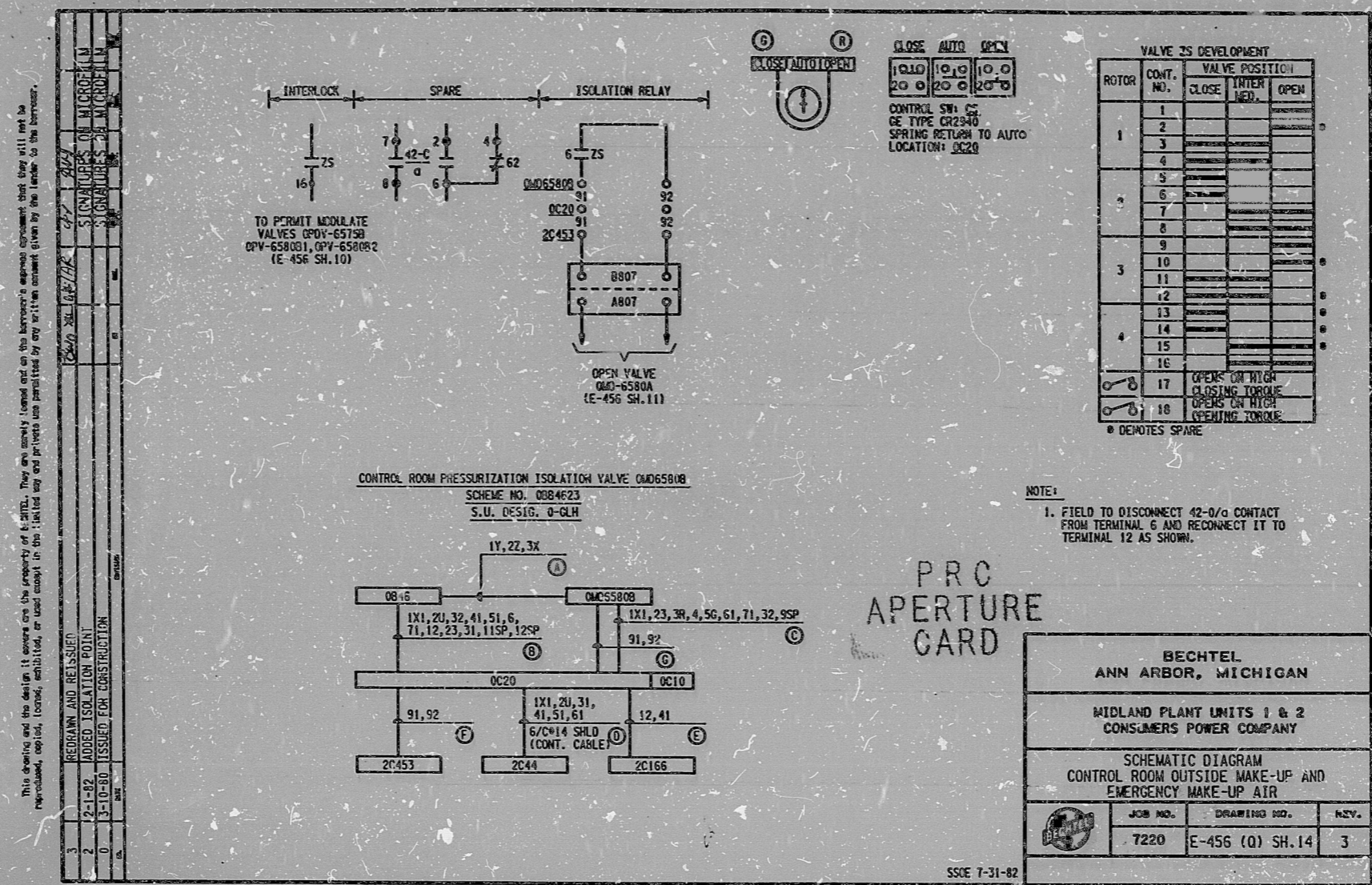
11"

8.5"

8.5"

11"

17"



This drawing and the design it covers are the property of BECHTEL. They are hereby loaned out on the borrower's express agreement that they will not be reproduced, copied, loaned, exhibited, or used in any way without the prior written consent given by the lender to the borrower.

REVISIONS

NO.	DATE	DESCRIPTION
1	11-03-82	ISSUED FOR CONSTRUCTION
2	12-1-82	ADDED ISOLATION POINT
3	3-10-80	ISSUED FOR CONSTRUCTION

DRAWN AND REISSUED  
SIGNATURES OF MICROFILM  
SIGNATURES OF WORKMEN

16X

CERTIFICATE OF MICROFILMING

"I certify that the image contained on this frame was made in the normal and regular course of business, on the date stated below and that it is an accurate reproduction of the document submitted to the contractor for filming, by Bechtel Power Corporation."

11-03-82 Rose Spires Sue Crockett  
DATE CAMERA OPERATOR CONTRACTOR SUPERVISOR



**RIDS**

8302090259

