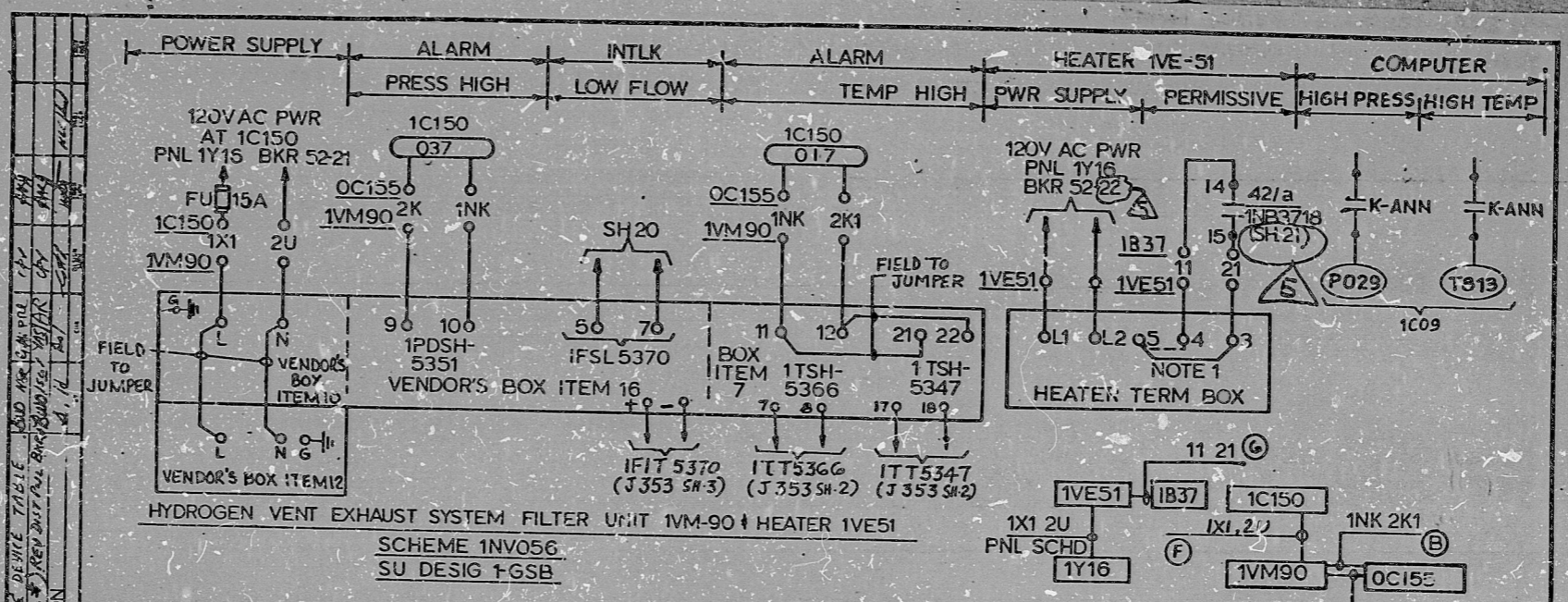


This drawing and the design it covers are the property of BECHTEL. They are hereby loaned and on the borrower's express agreement that they will not be
 reproduced, copied, loaned, exhibited or used except in the limited way and under the conditions permitted by the lender to the borrower.
 3-5-64, ADDED FIELD JUMPER U.A. REF. & DEVICE TABLE
 INC. DEN #11 (REV. 5, REF. 506, SH. 3) REV. 5/15/64
 ISSUED FOR CONSTRUCTION
 11/15/64



DEVICE TABLE:
 FU: FUSE (BUSS NON 15A)

**PRO
 APERTURE
 CARD**

NOTE:
 1. FIELD TO REMOVE EXISTING
 JUMPER BETWEEN TERM. 5
 & 4. AND INSTALL NEW JUMPER
 BETWEEN TERM 5 & 3.

REFERENCE:
 LOGIC DIAGRAM J-846
 VP 7220-M162-174,198,187-4

ADAPTER TABLE									
EQPT NO	SCHEME NO	120VAC PWR		PRESS SW	FLOW SW	TEMP SW		COMP	INTERLOCK
		PNL	BKR			LEAVING	ENTERING		
1VM-90	1NV056	1Y16	52-21	1PDSH-5351	1FSL-5370	1TSH-5347	1TSH-5366	P029 T813	1NB3718 1.7
2VM-90	2NV056	2Y16	52-21	2PDSH-6251	2FSL-6270	2TSH-6247	2TSH-6266	P029 T813	2NB3718 1.7

LOCATION		SU DESIG	ANN	120VAC PWR FOR NTR	INTERLOCK
W/CW NO.	PNL	W/CW NO.	PNL	PNL	BKR
1-1	1Y16	1-GSB	037	1Y16	52-22
2-1	2Y16	2-GSB	037	2Y16	52-23

BECHTEL
 ANN ARBOR, MICHIGAN

MIDLAND PLANT UNITS 1 & 2
 CONSUMERS POWER COMPANY

SCHEMATIC DIAGRAM
 REACTOR CONTAINMENT BUILDING
 H & V SYSTEM

JOB No.	DRAWING No.	REV.
7220	E-440 (G) SH 30	5

RID'S

8302090190

