

17"

11"

8.5"

17"

11"

8.5"

8.5"

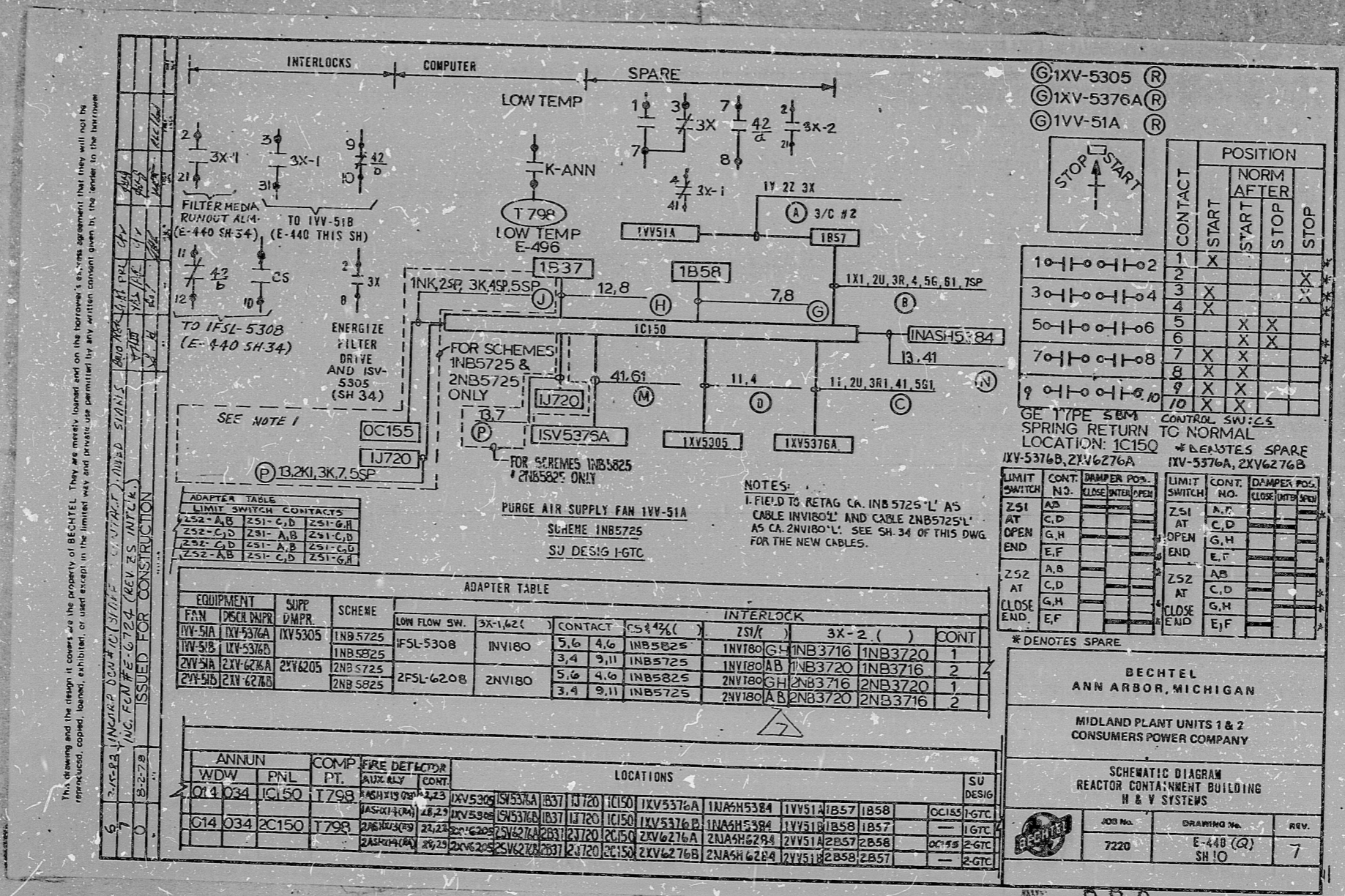
11"

17"

8.5"

11"

17"



(R) 1XV-5305
 (R) 1XV-5376A
 (R) 1VV-51A



CONTACT	POSITION				
	START	START	STOP	NORM AFTER	STOP
1-1-0-1-0-2	X				
3-1-0-1-0-4	X				
5-1-0-1-0-6		X	X		
7-1-0-1-0-8	X	X	X		
9-1-0-1-0-10	X	X	X		

GE TYPE SBM CONTROL SW:ZS
 SPRING RETURN TO NORMAL
 LOCATION: IC150

LIMIT SWITCH	CONT. NO.	DAMPEN POS.	LIMIT SWITCH	CONT. NO.	DAMPEN POS.
Z51	AB		Z51	AB	
AT	C,D		AT	C,D	
OPEN	G,H		OPEN	G,H	
END	E,F		END	E,F	
Z52	A,B		Z52	A,B	
AT	C,D		AT	C,D	
CLOSE	G,H		CLOSE	G,H	
END	E,F		END	E,F	

* DENOTES SPARE

BECHTEL
 ANN ARBOR, MICHIGAN

MIDLAND PLANT UNITS 1 & 2
 CONSUMERS POWER COMPANY

SCHEMATIC DIAGRAM
 REACTOR CONTAINMENT BUILDING
 H & V SYSTEMS

JOB No.	DRAWING No.	REV.
7220	E-440 (Q) SH 10	7

PRC
 APERTURE
 CARD

This drawing and the design it covers are the property of BECHTEL. They are hereby loaned and on the borrower's express agreement that they will not be reproduced, copied, loaned, exhibited, or used except in the limited way and through use permitted by any written consent given by the lender to the borrower.

RIDG

8302090132

