

17"

11"

8.5"

8.5"

11"

17"

17"

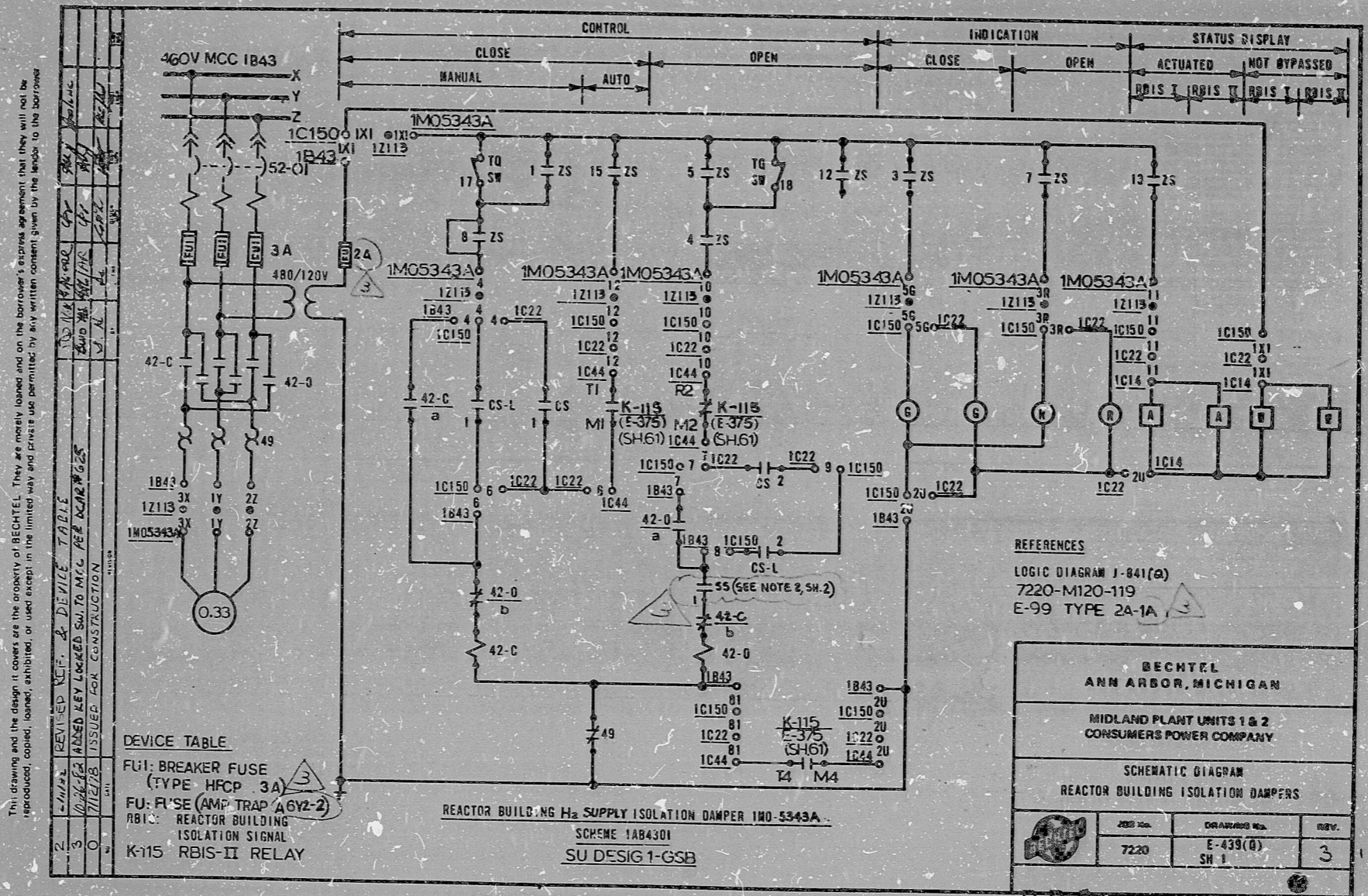
11"

8.5"

8.5"

11"

17"



"I certify that the image contained on this frame was made in the normal and regular course of business, on the date stated below and that it is an accurate reproduction of the document submitted to the contractor for filming, by Bechtel Power Corporation.

11-1-82 DATE  
 M. Ciccoy CAMERA OPERATOR  
 M. Chaney CONTRACTOR'S SUPERVISOR OR MANAGER

16X

PRC APERTURE CARD

RIDS

8302090103

