

17"

11"

8.5"

8.5"

11"

17"

17"

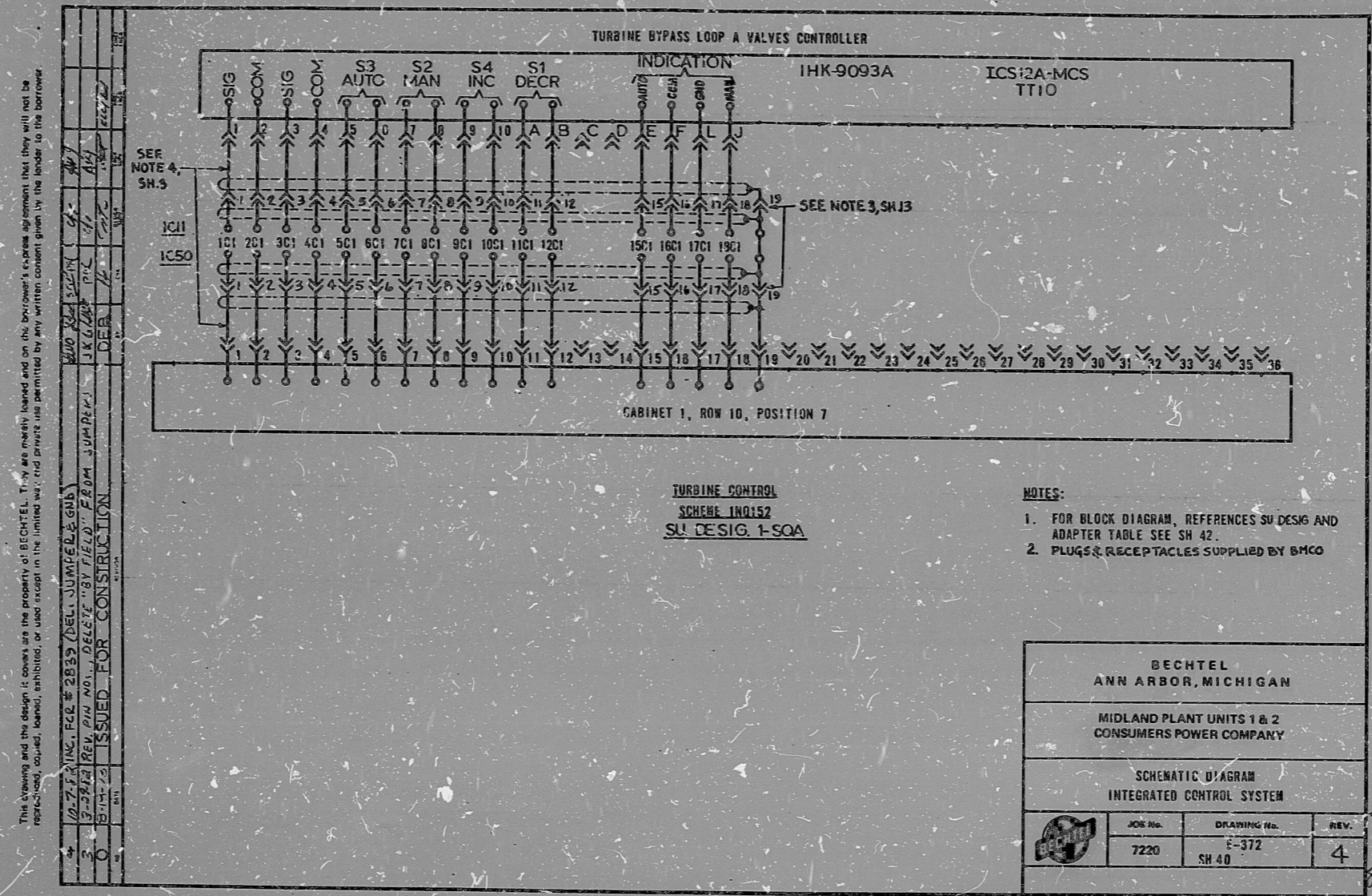
11"

8.5"

8.5"

11"

17"



This drawing and the design it covers are the property of BECHTEL, Inc. and are hereby loaned and on the borrower's express agreement that they will not be reproduced, copied, loaned, exhibited, or used except in the limited way and for the purposes permitted by any written consent given by the lender to the borrower.

10-7-77 INC. FGE # 2833 (BELL JUMPER & GUS)	JK	JK	JK
3-7-82 REV. DIM NO. 1, DELETE "BY FIELD" FROM JUMPER	JK	JK	JK
8-14-73 ISSUED FOR CONSTRUCTION	JK	JK	JK

16 X

**CERTIFICATE OF MICROFILMING**

"I certify that the image contained on this frame was made in the normal and regular course of business, on the date stated below and that it is an accurate reproduction of the document submitted to the contractor for filming, by Bechtel Power Corporation."

DATE 10-15-82 CAMERA OPERATOR Rose Spiras CONTRACTOR SUPERVISOR Sue Crockett

PRO APERTURE CARD



RIDS

8302070233

