

17"

11"

8.5"

8.5"

11"

17"

17"

11"

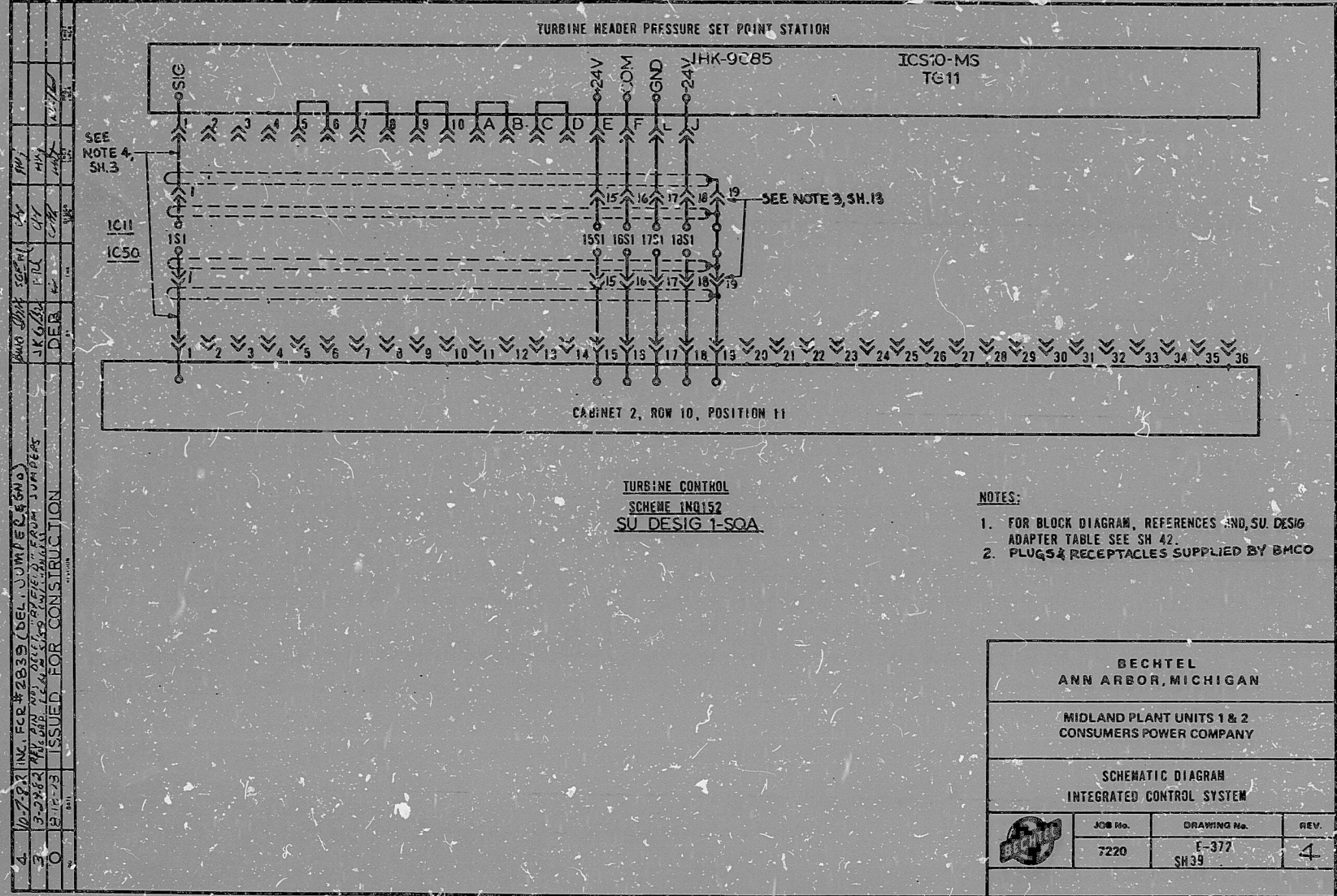
8.5"

8.5"

11"

17"

This drawing and the design it covers are the property of BECHTEL. They are loaned to you on the borrower's express agreement that they will not be reproduced, copied, loaned, exhibited, or used except in the limited way and scope permitted by any written consent given by the lender to the borrower.



16 X

78

CERTIFICATE OF MICROFILMING

" I certify that the image contained on this frame was made in the normal and regular course of business, on the date stated below and that it is an accurate reproduction of the document submitted to the contractor for filming, by Bechtel Power Corporation."

DATE 10-15-82 CAMERA OPERATOR Rose Spires CONTRACTOR SUPERVISOR Sue Crockett

PRC APERTURE CARD



RIDS

8302070230

