

17"

11"

8.5"

8.5"

11"

17"

17"

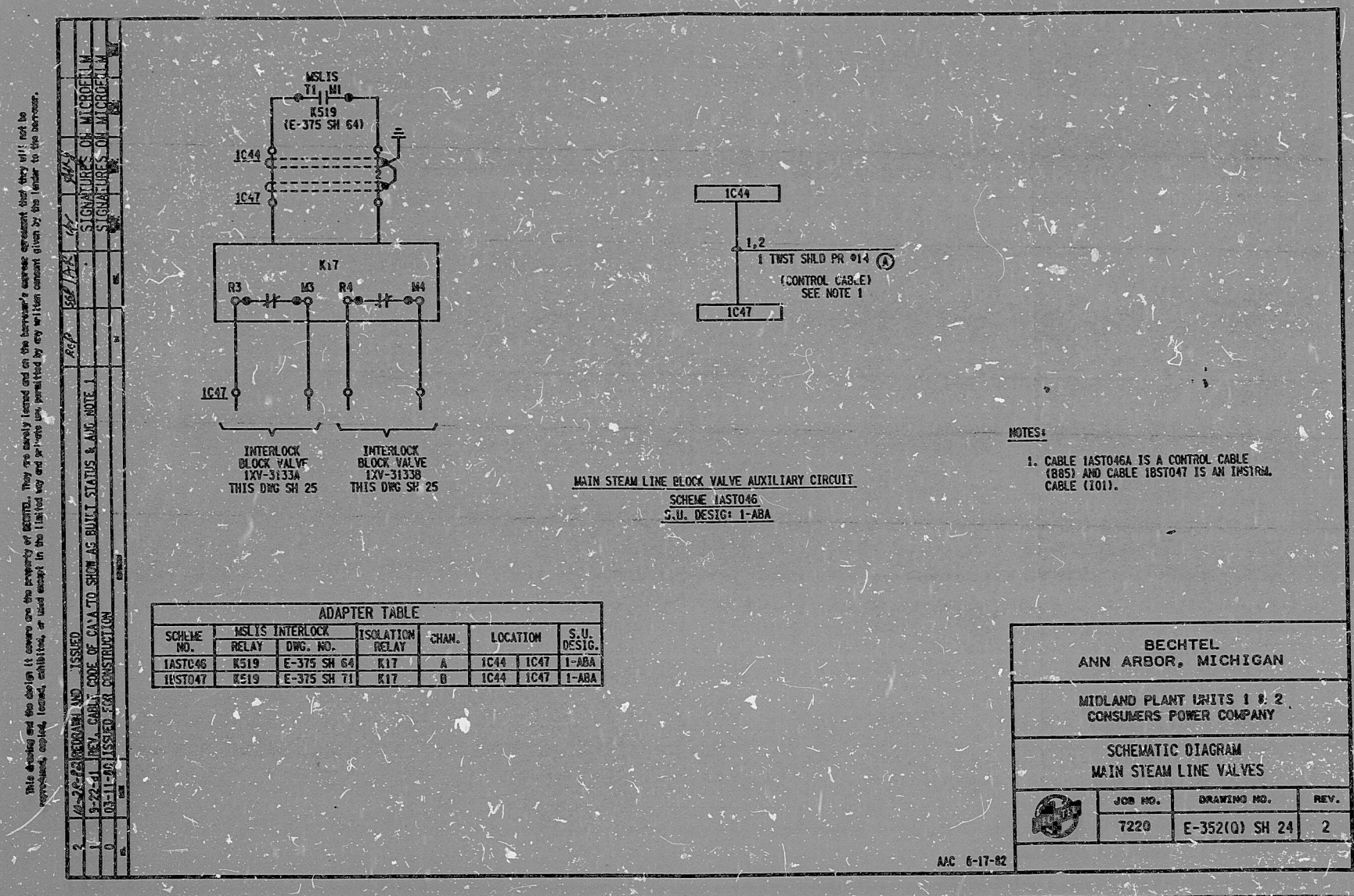
11"

8.5"

8.5"

11"

17"



This drawing and the design it covers are the property of Consumers Power Company. They are hereby loaned and on the borrower's express agreement that they will not be reproduced, copied, leased, exhibited, or used except in the limited way and for the use permitted by any written consent given by the lender to the borrower.

11-22-82 RECORDING NO. ISSUED  
3-22-81 REV. CUBBY CODE OF CVA TO SHOW AS BUILT STATUS & ADO. NOTE 1  
03-11-80 ISSUED FOR CONSTRUCTION

SIGNATURES OF MICROFILM  
SIGNATURES OF MICROFILM

I certify that the image contained on this frame was made in the normal and regular course of business, on the date stated below and that it is an accurate reproduction of the document submitted to reprographics.

11-12-82 DATE  
Teresa L. Lohrby OPERATOR  
SUPERVISOR OF REPROGRAPHICS

PRG  
APERTURE  
CARD

16X



RIDS

8302070145

