

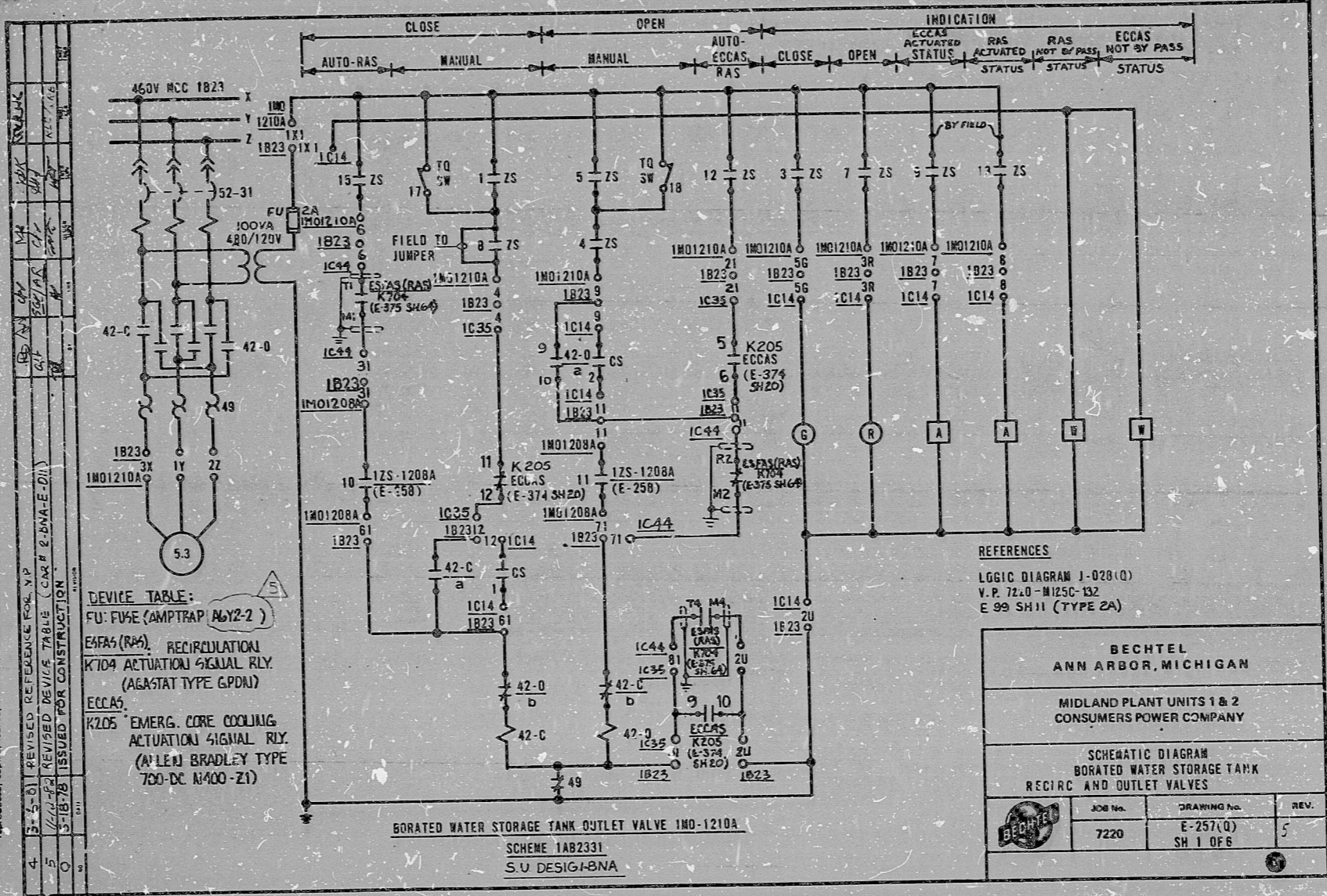
17"
11"
8.5"
8.5"
11"
17"

16X

"I certify that the image contained on this frame was made in the normal and regular course of business, on the date stated below and that it is an accurate reproduction of the document submitted to the contractor for filming, by Bechtel Power Corporation.

11-16-80
DATE
G. J. ...
CONTRACTOR'S SUP'Y.
OR 14-10-80

This drawing and the design it covers are the property of BECHTEL. They are hereby loaned, and on the borrower's express agreement that they will not be reproduced, copied, loaned, exhibited, or used except in the limited way and for the purposes permitted by the lender to the borrower.



PRC
 APERTURE
 CARD

17"
11"
8.5"
8.5"
11"
17"

RIDS

8302070109

