

17"

11"

8.5"

8.5"

11"

17"

17"

17"

11"

8.5"

8.5"

11"

17"

16X

"I certify that the image contained on this frame was made in the normal and regular course of business, on the date stated below and that it is an accurate reproduction of the document submitted to the contractor for filming, by General Power Corporation."

11-16-82 DATE
 R. Schuman OPERATOR
 J. M. ... CHIEF ENGINEER
 ... MANAGER

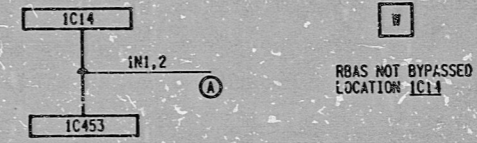
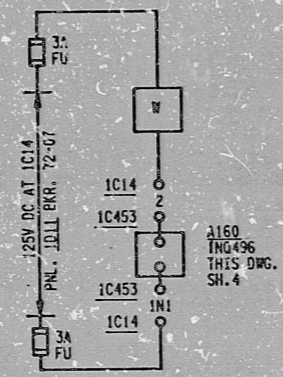
This drawing and the design it covers are the property of BECHTEL. They are hereby loaned only to the borrower's express agreement and they will not be reproduced, copied, loaned, exhibited, or used except in the limited way and purpose as permitted by any written consent given by the lender to the borrower.

REV.	DATE	DESCRIPTION	BY	CHK.
1	7/17/72	PROGRAM AND ISSUED		
2	2-27-82	REV'D. ADAPTER TABLE, INTERLOCK, DEFLT. REFERENCE		
0	7-6-81	ISSUED FOR CONSTRUCTION		

DEVICE TABLE:
 RBSAS: REACTOR BLOC. SPRAY ACTUATION SIGNAL
 FU: FUSE (BUSS 3A MIN.)

SCHEME NO.	DC POWER		ISOLATOR RELAY	LOCATIONS		S.U. DESIG.
	PNL	T BKR		IC14	IC453	
1A0494	1D	1172-07	A160/1N0496	IC14	IC453	1-BKA
1B0495	1D	2172-07	B455/1N0497	IC14	IC453	1-BKA
2A0494	2D	1172-07	A158/2N0496	2C14	2C453	2-BKA
2B0495	2D	2172-07	B455/2N0497	2C14	2C453	2-BKA

PLANT STATUS INDICATION RBSAS MANUAL VALVE
 SCHEME NO. 1A0494
 S.U. DESIG. 1-BKA



REFERENCES:

LOGIC DIAGRAM: J232 SH. 9

BECHTEL ANN ARBOR, MICHIGAN		
MIDLAND PLANT UNITS 1 & 2 CONSUMERS POWER COMPANY		
SCHEMATIC DIAGRAM REACTOR BUILDING SPRAY VALVES		
JOB NO.	DRAWING NO.	REV.
7220	E-256 (Q) SH.3	3

AAC 8-3-82

REV 542

PRO APERTURE CARD

RIDS

8302070|0|

