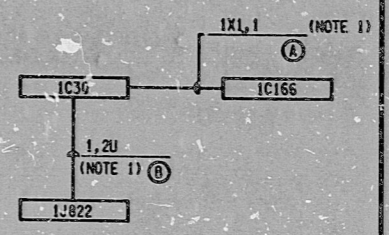
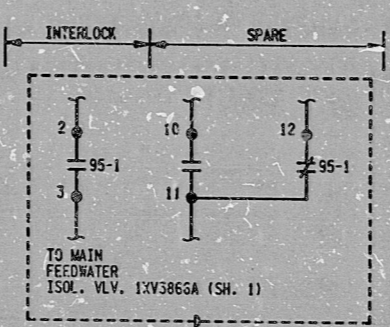
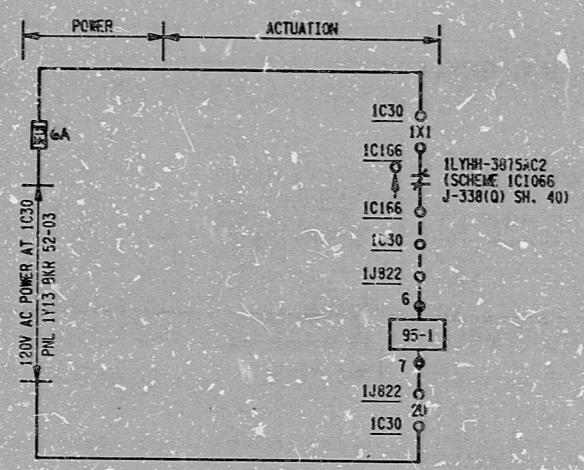


This drawing and the design it covers are the property of BECHTEL. They are hereby loaned and on the borrower's express agreement that they will not be reproduced, copied, loaned, exhibited, or used except in the limited way and for the use permitted by any written consent given by the lender to the borrower.

|          |         |                              |      |
|----------|---------|------------------------------|------|
| REVISION | DATE    | BY                           | CHKD |
| 1        | 7-30-82 | ISSUED FOR CONSTRUCTION      |      |
| 2        |         | REVISED (REV. ADAPTER TABLE) |      |
| 3        |         | REVISED (REV. ADAPTER TABLE) |      |



ISOLATION CIRCUIT FOR STEAM GEN. LEVEL SIGNAL  
SCHEME NO. 1CFW136  
S.U. DESIG. 1ACA

DEVICE TABLE:

FU: FUSE (BUSS MIN. 6A)  
95-1: LOCAL ISOLATOR RELAY  
(CCC TYPE KG431B)

| SCHEME NO. | LEVEL SIGNAL  | INTERLOCK  |                | 120V AC POWER |       | LOCATION |          | RELAY 95-1 INT'L'K |          | S.U. DESIG. |            |      |
|------------|---------------|------------|----------------|---------------|-------|----------|----------|--------------------|----------|-------------|------------|------|
|            |               | SCHEME NO. | DWG. NO.       | PANEL         | BKR.  | CONT.    | TO VALVE | SCHEME/SH.         |          |             |            |      |
| 1CFW136    | 1LYHH-3875AC2 | 1C1066     | J338(O)SH40641 | 1Y13          | 52-03 | 1J822    | 1C30     | 1C166              | (2, 3)   | 1XV-3866A   | 1AFW001/1  | 1AEA |
| 1CFW137    | 1LYHH-3875BC2 | 1C1066     | J338(O)SH40641 | 1Y13          | 52-03 | 1J823    | 1C30     | 1C166              | (2, 3)   | 1XV-3866B   | 1AFW002/1A | 1AEA |
| 1DFW134    | 1LYHH-3875AD2 | 1D1066     | J338(O)SH40641 | 1Y14          | 52-03 | 1J824    | 1C30     | 1C166              | (11, 12) | 1XV-3866A   | 1BFW123/6  | 1AEA |
| 1DFW135    | 1LYHH-3875BD2 | 1D1066     | J338(O)SH40641 | 1Y14          | 52-03 | 1J825    | 1C30     | 1C166              | (11, 12) | 1XV-3866B   | 1BFW124/8  | 1AEA |
| 2CFW136    | 2LYHH-3975AC2 | 2C1069     | J337(O)SH40641 | 2Y13          | 52-03 | 2J1099   | 2C30     | 2C166              | (2, 3)   | 2XV-3966A   | 2AFW001/1A | 2AEA |
| 2CFW137    | 2LYHH-3975BC2 | 2C1069     | J337(O)SH40641 | 2Y13          | 52-03 | 2J1100   | 2C30     | 2C166              | (2, 3)   | 2XV-3966B   | 2AFW001/1A | 2AEA |
| 2DFW134    | 2LYHH-3975AD2 | 2D1069     | J337(O)SH40641 | 2Y14          | 52-03 | 2J1101   | 2C30     | 2C166              | (11, 12) | 2XV-3966A   | 2BFW123/8  | 2AEA |
| 2DFW135    | 2LYHH-3975BD2 | 2D1069     | J337(O)SH40641 | 2Y14          | 52-03 | 2J1102   | 2C30     | 2C166              | (11, 12) | 2XV-3966B   | 2BFW124/8  | 2AEA |

NOTES

- CABLES A & B ARE TRANSFERRED FROM E-401(O)SH(9) & 10 (BLOCK DIA. AEA-2)
- ISOLATION & SEPARATION MUST BE MAINTAINED BETWEEN 95-1 RELAY COIL (CHAN. "C" OR "D") AND OUTPUT CONTACTS (CHAN. "A" OR "B")

REFERENCES

LOGIC DIAGRAM J-138(O)  
JUNCTION BOX SCHEDULE E-46

BECHTEL  
ANN ARBOR, MICHIGAN

MIDLAND PLANT UNITS 1 & 2  
CONSUMERS POWER COMPANY

SCHEMATIC DIAGRAM  
MAIN FEEDWATER & OTSG BLOWDOWN  
ISOLATION VALVES

| JOB NO. | DRAWING NO.     | REV. |
|---------|-----------------|------|
| 7220    | E-155(O) SH. 13 | 1    |

AAC 10-19-82

"I certify that the image contained on this frame was made in the normal and regular course of business, on the date stated below and that it is an accurate reproduction of the document submitted to the contractor for filing, by Bechtel Power Corporation."

11-15-82  
LATE  
C. Myrton  
CAMERA OPERATOR  
CONTRACTOR'S SUPV.  
OR MANAGER

16X

P.R.C.  
APERTURE  
CARD

RIDS

8302070045

