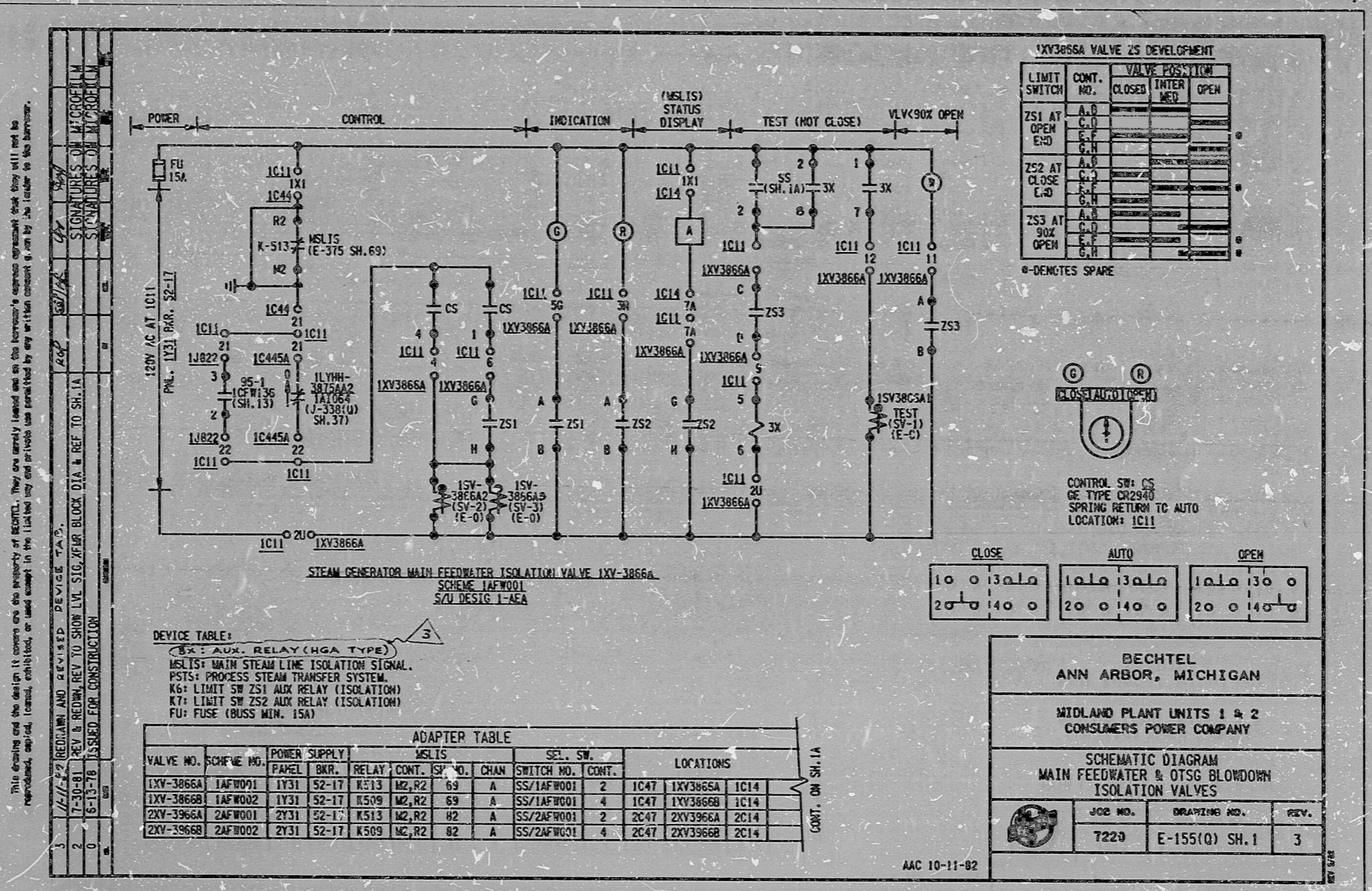


17"
11"
8.5"
8.5"
11"
17"

17"
11"
8.5"
8.5"
11"
17"



This drawing and the details it contains are the property of BECHTEL. They are hereby loaned to you on the understanding that they will not be reproduced, copied, loaned, or used except in the limited way and on the conditions set forth in the written contract or by the leader of the borrower.
 11/15/82 REVISION AND REVISED DEVICE TABLE.
 12-30-81 REV B REDW. REV TO SHOW LVL SIG. FOR BLOCK DIA. & REF TO SH. 1A
 8-13-78 ISSUED FOR CONSTRUCTION

DEVICE TABLE:
 (X): AUX. RELAY (HGA TYPE)
 MSL15: MAIN STEAM LINE ISOLATION SIGNAL.
 PSTS: PROCESS STEAM TRANSFER SYSTEM.
 K6: LIMIT SW ZS1 AUX RELAY (ISOLATION)
 K7: LIMIT SW ZS2 AUX RELAY (ISOLATION)
 FU: FUSE (BUSS MIN. 15A)

ADAPTER TABLE

VALVE NO.	SCHEM. NO.	POWER SUPPLY		MSL15		SEL. SW.		LOCATIONS				
		PANEL	BKR.	RELAY	CONT.	SP. NO.	CHAN	SWITCH NO.	CONT.	1C47	1XV3866A	1C14
1XV-3866A	1AFW001	1Y31	S2-17	K513	M2, R2	69	A	SS/1AFW001	2	1C47	1XV3866A	1C14
1XV-3866B	1AFW002	1Y31	S2-17	K509	M2, R2	69	A	SS/1AFW001	4	1C47	1XV3866B	1C14
2XV-3966A	2AFW001	2Y31	S2-17	K513	M2, R2	82	A	SS/2AFW001	2	2C47	2XV3966A	2C14
2XV-3966B	2AFW002	2Y31	S2-17	K509	M2, R2	82	A	SS/2AFW001	4	2C47	2XV3966B	2C14

I certify that the image contained on this frame was made in the normal and regular course of business, on the date stated below and that it is an accurate reproduction of the document submitted to the contractor for filming, by Bechtel Power Corporation.

11-15-82 DATE
 C. [Signature] CAMERA OPERATOR
 M. [Signature] CONTRACTOR'S SUPERVISOR OR MANAGER

16X

PRC
APERTURE
CARD

RIDS

8302070026

