

17

11

8.5

8.5

11

17

17

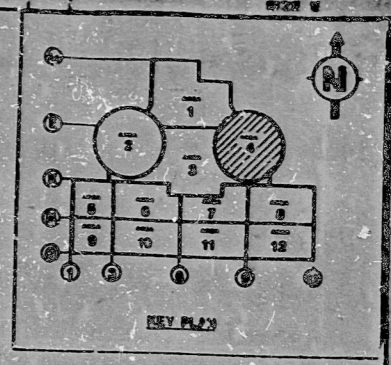
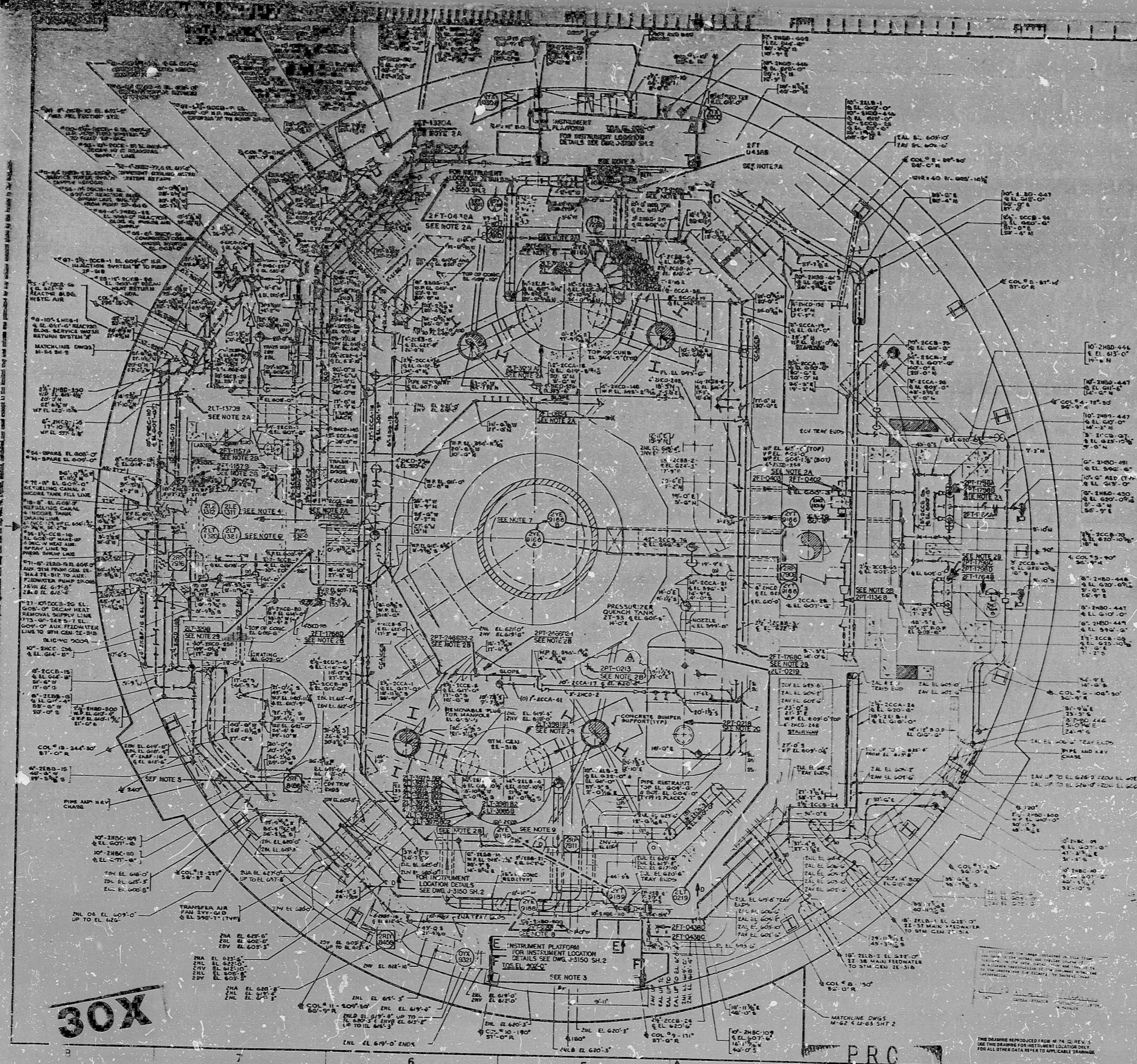
11

8.5

8.5

11

17



REVISIONS

NO.	DATE	BY	CHKD.	DESCRIPTION
1	12/10/82	J. J. [unclear]	[unclear]	ISSUED FOR CONSTRUCTION

- INSTRUMENT LOCATION DRAWING NOTES:**
1. SEE DRAWING 7220-J-310(Q) FOR ALL GENERAL NOTES.
 2. THESE ARE TAP LOCATIONS ONLY. FOR INSTRUMENT LOCATION SEE:
 - A) DWG. J-3150 SH.2 NORTH
 - B) DWG. J-3150 SH.2 SOUTH
 - C) DWG. J-3152 NORTH SITE
 3. FOR INSTRUMENT LOCATION DETAILS OF NORTH AND SOUTH INSTRUMENT PLATFORMS AND SECONDARY SHIELD WALLS, SEE DWG. J-3150(Q) SH.2
 4. THESE ARE LEVEL SENSING ELEMENTS ONLY. FOR SIGNAL PROCESSING UNIT SEE: J-3144, INSTR. 2LT-1311, 2LT-1312.
 5. THIS INSTRUMENT IS LOCATED ON TOP OF WALL.
 6. THESE TRANSMITTERS LEASURE SUMP LEVEL, VIA CAPILLARY LINE.
 7. ACCELEROMETER 2VE-988A & B AND THEIR RESPECTIVE TRANSMITTERS TO BE INSTALLED PER VENDOR: DWG. 7220-J-209-15/7220-J-209-17
 8. ACCELEROMETER LOCATION ONLY PER VENDOR DWG. 7220-J-209-17. FOR RESPECTIVE TRANSMITTER LOCATION SEE DWG. 7220-J-3151.
 9. ACCELEROMETER 2VE-989 TO BE INSTALLED PER VENDOR DWG. 7220-J-209-17

NO.	REVISION	DATE	BY	CHKD.	DESCRIPTION
1	REVISED AS INDICATED	12/10/82	J. J. [unclear]	[unclear]	ISSUED FOR CONSTRUCTION
2	REVISED AS INDICATED	12/10/82	J. J. [unclear]	[unclear]	ISSUED FOR CONSTRUCTION
3	REVISED AS INDICATED	12/10/82	J. J. [unclear]	[unclear]	ISSUED FOR CONSTRUCTION
4	REVISED AS INDICATED	12/10/82	J. J. [unclear]	[unclear]	ISSUED FOR CONSTRUCTION
5	REVISED AS INDICATED	12/10/82	J. J. [unclear]	[unclear]	ISSUED FOR CONSTRUCTION
6	REVISED AS INDICATED	12/10/82	J. J. [unclear]	[unclear]	ISSUED FOR CONSTRUCTION
7	REVISED AS INDICATED	12/10/82	J. J. [unclear]	[unclear]	ISSUED FOR CONSTRUCTION
8	REVISED AS INDICATED	12/10/82	J. J. [unclear]	[unclear]	ISSUED FOR CONSTRUCTION
9	REVISED AS INDICATED	12/10/82	J. J. [unclear]	[unclear]	ISSUED FOR CONSTRUCTION
10	REVISED AS INDICATED	12/10/82	J. J. [unclear]	[unclear]	ISSUED FOR CONSTRUCTION
11	REVISED AS INDICATED	12/10/82	J. J. [unclear]	[unclear]	ISSUED FOR CONSTRUCTION
12	REVISED AS INDICATED	12/10/82	J. J. [unclear]	[unclear]	ISSUED FOR CONSTRUCTION
13	REVISED AS INDICATED	12/10/82	J. J. [unclear]	[unclear]	ISSUED FOR CONSTRUCTION
14	REVISED AS INDICATED	12/10/82	J. J. [unclear]	[unclear]	ISSUED FOR CONSTRUCTION
15	REVISED AS INDICATED	12/10/82	J. J. [unclear]	[unclear]	ISSUED FOR CONSTRUCTION
16	REVISED AS INDICATED	12/10/82	J. J. [unclear]	[unclear]	ISSUED FOR CONSTRUCTION
17	REVISED AS INDICATED	12/10/82	J. J. [unclear]	[unclear]	ISSUED FOR CONSTRUCTION
18	REVISED AS INDICATED	12/10/82	J. J. [unclear]	[unclear]	ISSUED FOR CONSTRUCTION
19	REVISED AS INDICATED	12/10/82	J. J. [unclear]	[unclear]	ISSUED FOR CONSTRUCTION
20	REVISED AS INDICATED	12/10/82	J. J. [unclear]	[unclear]	ISSUED FOR CONSTRUCTION
21	REVISED AS INDICATED	12/10/82	J. J. [unclear]	[unclear]	ISSUED FOR CONSTRUCTION
22	REVISED AS INDICATED	12/10/82	J. J. [unclear]	[unclear]	ISSUED FOR CONSTRUCTION
23	REVISED AS INDICATED	12/10/82	J. J. [unclear]	[unclear]	ISSUED FOR CONSTRUCTION
24	REVISED AS INDICATED	12/10/82	J. J. [unclear]	[unclear]	ISSUED FOR CONSTRUCTION
25	REVISED AS INDICATED	12/10/82	J. J. [unclear]	[unclear]	ISSUED FOR CONSTRUCTION
26	REVISED AS INDICATED	12/10/82	J. J. [unclear]	[unclear]	ISSUED FOR CONSTRUCTION
27	REVISED AS INDICATED	12/10/82	J. J. [unclear]	[unclear]	ISSUED FOR CONSTRUCTION
28	REVISED AS INDICATED	12/10/82	J. J. [unclear]	[unclear]	ISSUED FOR CONSTRUCTION
29	REVISED AS INDICATED	12/10/82	J. J. [unclear]	[unclear]	ISSUED FOR CONSTRUCTION
30	REVISED AS INDICATED	12/10/82	J. J. [unclear]	[unclear]	ISSUED FOR CONSTRUCTION
31	REVISED AS INDICATED	12/10/82	J. J. [unclear]	[unclear]	ISSUED FOR CONSTRUCTION
32	REVISED AS INDICATED	12/10/82	J. J. [unclear]	[unclear]	ISSUED FOR CONSTRUCTION
33	REVISED AS INDICATED	12/10/82	J. J. [unclear]	[unclear]	ISSUED FOR CONSTRUCTION
34	REVISED AS INDICATED	12/10/82	J. J. [unclear]	[unclear]	ISSUED FOR CONSTRUCTION
35	REVISED AS INDICATED	12/10/82	J. J. [unclear]	[unclear]	ISSUED FOR CONSTRUCTION
36	REVISED AS INDICATED	12/10/82	J. J. [unclear]	[unclear]	ISSUED FOR CONSTRUCTION
37	REVISED AS INDICATED	12/10/82	J. J. [unclear]	[unclear]	ISSUED FOR CONSTRUCTION
38	REVISED AS INDICATED	12/10/82	J. J. [unclear]	[unclear]	ISSUED FOR CONSTRUCTION
39	REVISED AS INDICATED	12/10/82	J. J. [unclear]	[unclear]	ISSUED FOR CONSTRUCTION
40	REVISED AS INDICATED	12/10/82	J. J. [unclear]	[unclear]	ISSUED FOR CONSTRUCTION
41	REVISED AS INDICATED	12/10/82	J. J. [unclear]	[unclear]	ISSUED FOR CONSTRUCTION
42	REVISED AS INDICATED	12/10/82	J. J. [unclear]	[unclear]	ISSUED FOR CONSTRUCTION
43	REVISED AS INDICATED	12/10/82	J. J. [unclear]	[unclear]	ISSUED FOR CONSTRUCTION
44	REVISED AS INDICATED	12/10/82	J. J. [unclear]	[unclear]	ISSUED FOR CONSTRUCTION
45	REVISED AS INDICATED	12/10/82	J. J. [unclear]	[unclear]	ISSUED FOR CONSTRUCTION
46	REVISED AS INDICATED	12/10/82	J. J. [unclear]	[unclear]	ISSUED FOR CONSTRUCTION
47	REVISED AS INDICATED	12/10/82	J. J. [unclear]	[unclear]	ISSUED FOR CONSTRUCTION
48	REVISED AS INDICATED	12/10/82	J. J. [unclear]	[unclear]	ISSUED FOR CONSTRUCTION
49	REVISED AS INDICATED	12/10/82	J. J. [unclear]	[unclear]	ISSUED FOR CONSTRUCTION
50	REVISED AS INDICATED	12/10/82	J. J. [unclear]	[unclear]	ISSUED FOR CONSTRUCTION

BECHTEL
 MIDLAND PLANT UNITS 1 & 2
 CONSUMERS POWER COMPANY

INSTRUMENT LOCATION DRAWING
 25.50 FOR BLDG. UNIT-2
 PLAN OF FL. 553'-6"

NO.	DATE	BY	CHKD.	DESCRIPTION
7220	J-3150(Q)SH.1	8		

30X

PRC APERTURE

7220 J-3150(Q)SH.1 8

RIDS

8302040576

