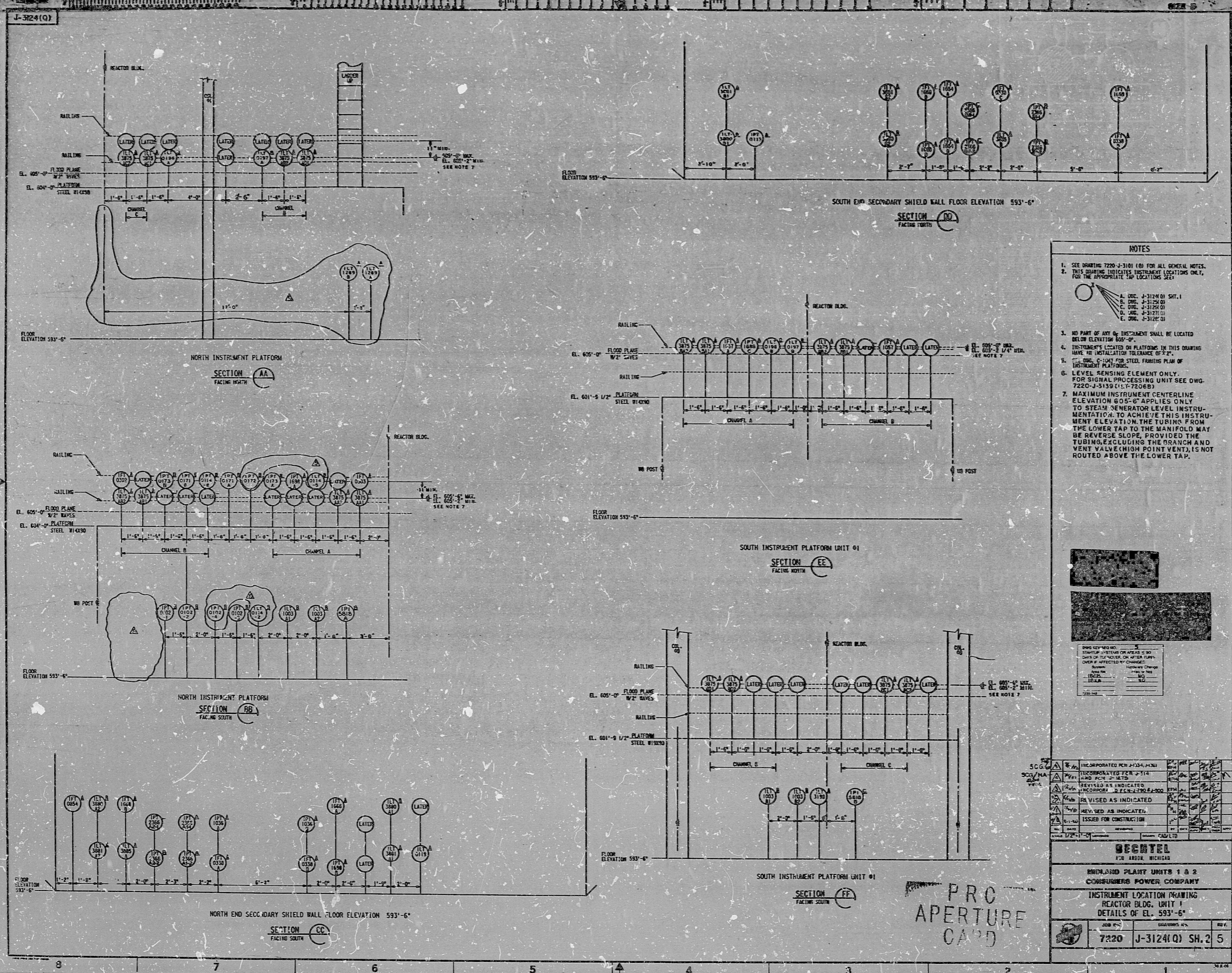


11  
8.5  
8.5  
11  
17

11  
8.5  
8.5  
11  
17

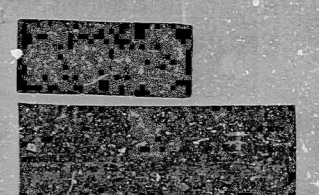


NOTES

- SEE DRAWING 7220-J-3124(Q) FOR ALL GENERAL NOTES.
- THIS DRAWING INDICATES INSTRUMENT LOCATIONS ONLY. FOR THE APPROPRIATE TAP LOCATIONS SEE:

- IEL 0054
- IEL 0055
- IEL 0056
- IEL 0057
- IEL 0058
- IEL 0059
- IEL 0060

- NO PART OF ANY INSTRUMENT SHALL BE LOCATED BELOW ELEVATION 603'-0".
- INSTRUMENTS LOCATED ON PLATFORMS IN THIS DRAWING HAVE NO INSTALLATION TOLERANCE OF ±2".
- SEE DRAWING 7220-J-3124(Q) FOR STEEL FRAMING PLAN OF INSTRUMENT PLATFORMS.
- LEVEL WELDING ELEMENT ONLY. FOR SIGNAL PROCESSING UNIT SEE DWG. 7220-J-3139 (1.1.7-7206B).
- MAXIMUM INSTRUMENT CENTERLINE ELEVATION 605'-6" APPLIES ONLY TO STEAM GENERATOR LEVEL INSTRUMENTATION. TO ACHIEVE THIS INSTRUMENT ELEVATION, THE TUBING FROM THE LOWER TAP TO THE MANIFOLD MAY BE REVERSE SLOPE, PROVIDED THE TUBING, EXCLUDING THE BRANCH AND VENT VALVE (HIGH POINT VENT), IS NOT ROUTED ABOVE THE LOWER TAP.



SCG...  
SCG/HA  
...

NO.	DESCRIPTION	DATE
1	ISSUED FOR CONSTRUCTION	

<b>SECRET</b> FCB ARBOR, MICHIGAN	
MIDLAND PLANT UNITS 1 & 2 CONSUMERS POWER COMPANY	
INSTRUMENT LOCATION DRAWING REACTOR BLDG. UNIT 1 DETAILS OF EL. 593'-6"	
7220	J-3124(Q) SH. 2 5

PRO APERTURE CARD

**RIDS**

8302040444

