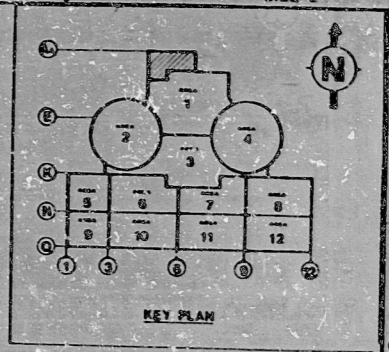
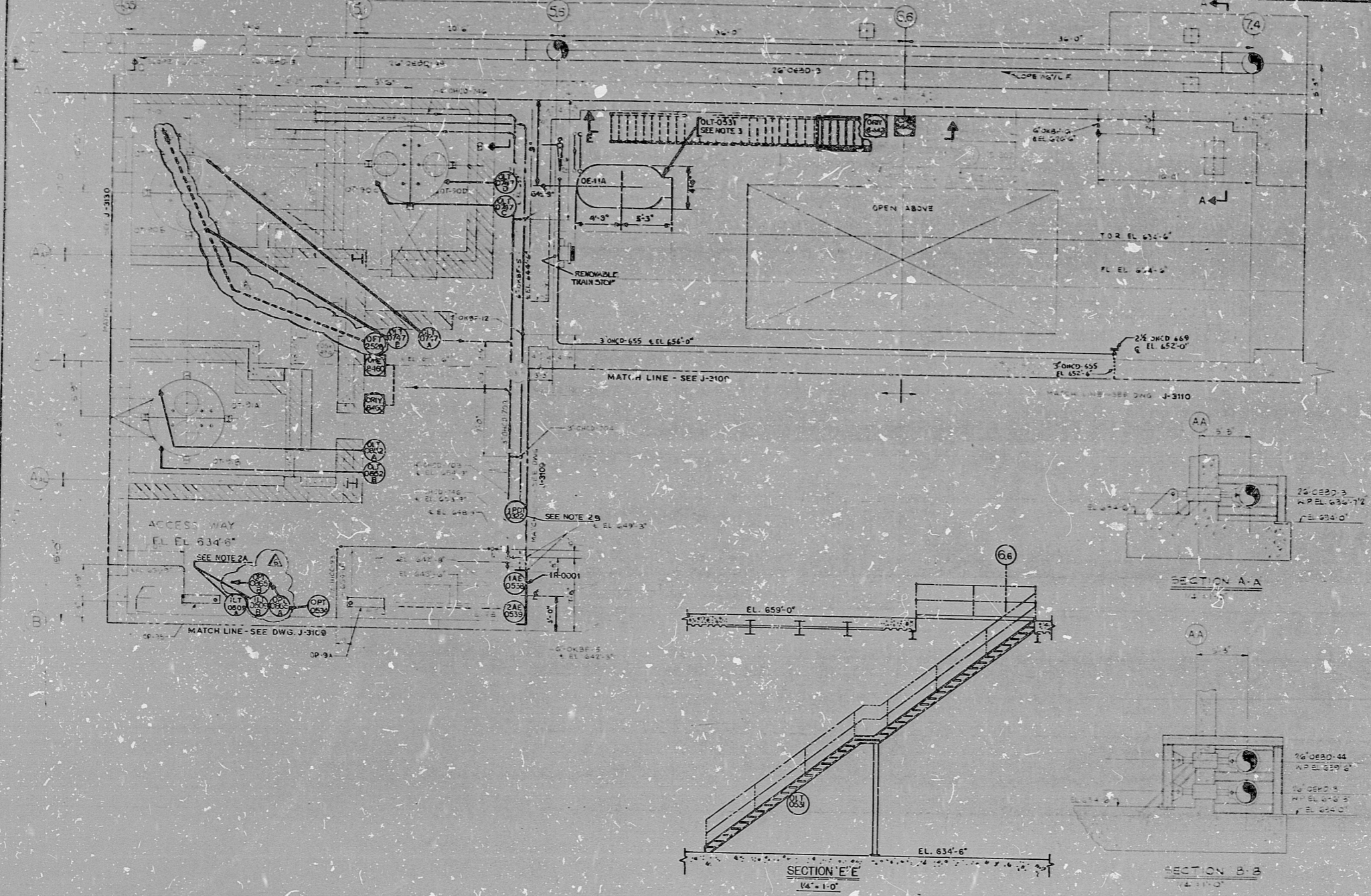


J-3111 (Q)

SIZE E



| SYSTEM STATUS LEDGER | | | |
|------------------------------------|------|---------|-----|
| SYSTEM | FR | ISSUED | CHG |
| FIRE PROTECTION SYSTEM | 2/28 | 3-2-76 | |
| DEMINERALIZED WATER SYSTEM | 2/28 | | |
| REACTOR CHEMICAL ADDITION SYSTEM | 2/28 | 7-13-76 | |
| HIGH PRESSURE PROCESS STEAM SYSTEM | 2/28 | 8-30-76 | |

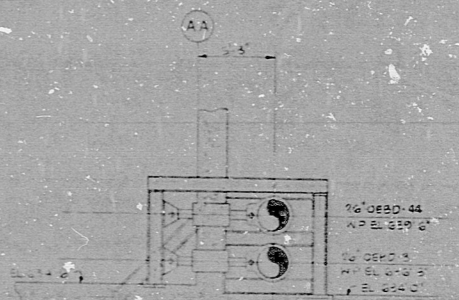
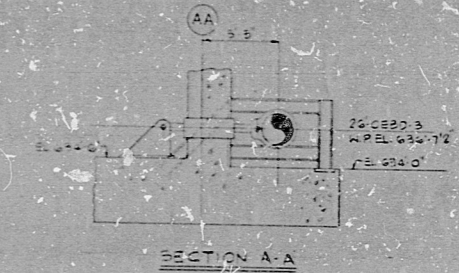
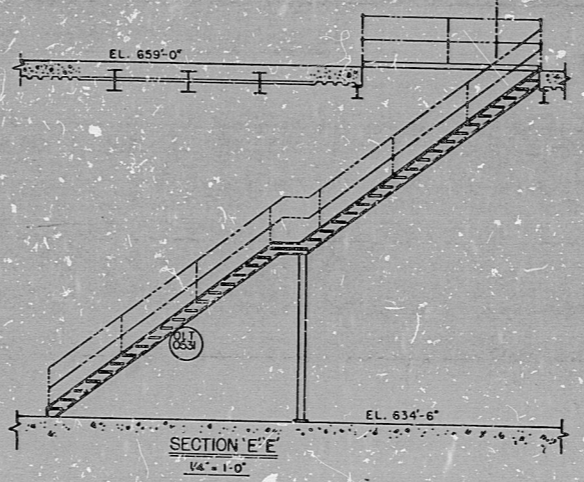
| | |
|-------------|------|
| DESIGNED BY | DATE |
| CHECKED BY | DATE |
| APPROVED BY | DATE |

INSTRUMENT LOCATION DRAWING NOTES

1. SEE DRAWING 7220-J-3101(Q) FOR ALL GENERAL NOTES.

2. TAP LOCATION FOR THESE INSTRUMENTS ARE SHOWN ON DRAWING 614-3112.

3. TAP LOCATION ONLY FOR INSTRUMENT LOCATION REFER TO SECTION E-E THIS DWG.



30X

DATE: 2/22/76
 DESIGNER: M. J. ...
 CHECKER: ...
 CONTRACTOR'S COPY

PRC APERTURE CARD

| | |
|-------------------------|------|
| REVISER'S INDICATED | DATE |
| ADDED IN TORY-3442(845) | |
| RELOCATED 01-20747A/B | |
| REMOVED AND RECORDED | |
| ISSUED FOR CONSTRUCTION | |

| | | |
|-----------------------------|------------|-----|
| BECNTEL | | |
| MIDLAND PLANT UNITS 1 & 2 | | |
| CONSUMERS POWER COMPANY | | |
| INSTRUMENT LOCATION DRAWING | | |
| AREA 1 | | |
| PLAN OF ELEV 634'-6" | | |
| DWG NO | DRAWING No | REV |
| 7220 | J-3111 (Q) | 6 |

SECTION D-D
 THIS DRAWING IS A REPRODUCTION FROM 7220-M-35-SH-3101 (REV. 6)
 USE THIS DRAWING FOR INSTRUMENT LOCATION ONLY
 FOR ALL OTHER DATA REFER TO APPLICABLE DRAWINGS

17"
11"
8.5"
8.5"
11"
17"

17"
11"
8.5"
8.5"
11"
17"

RIDS

8302040422

