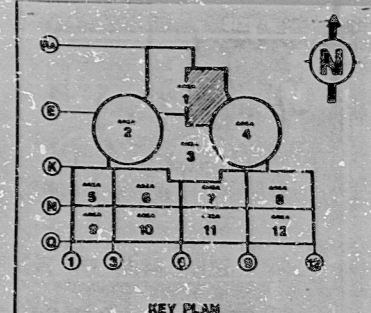
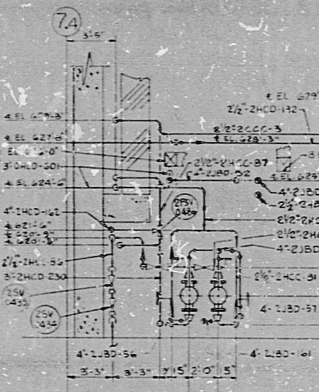
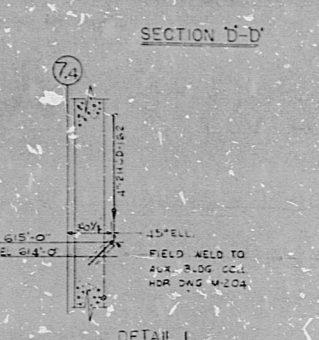
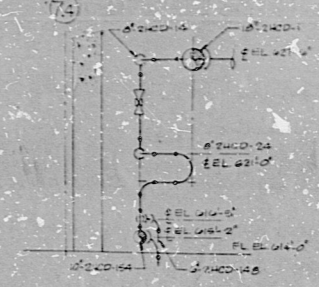
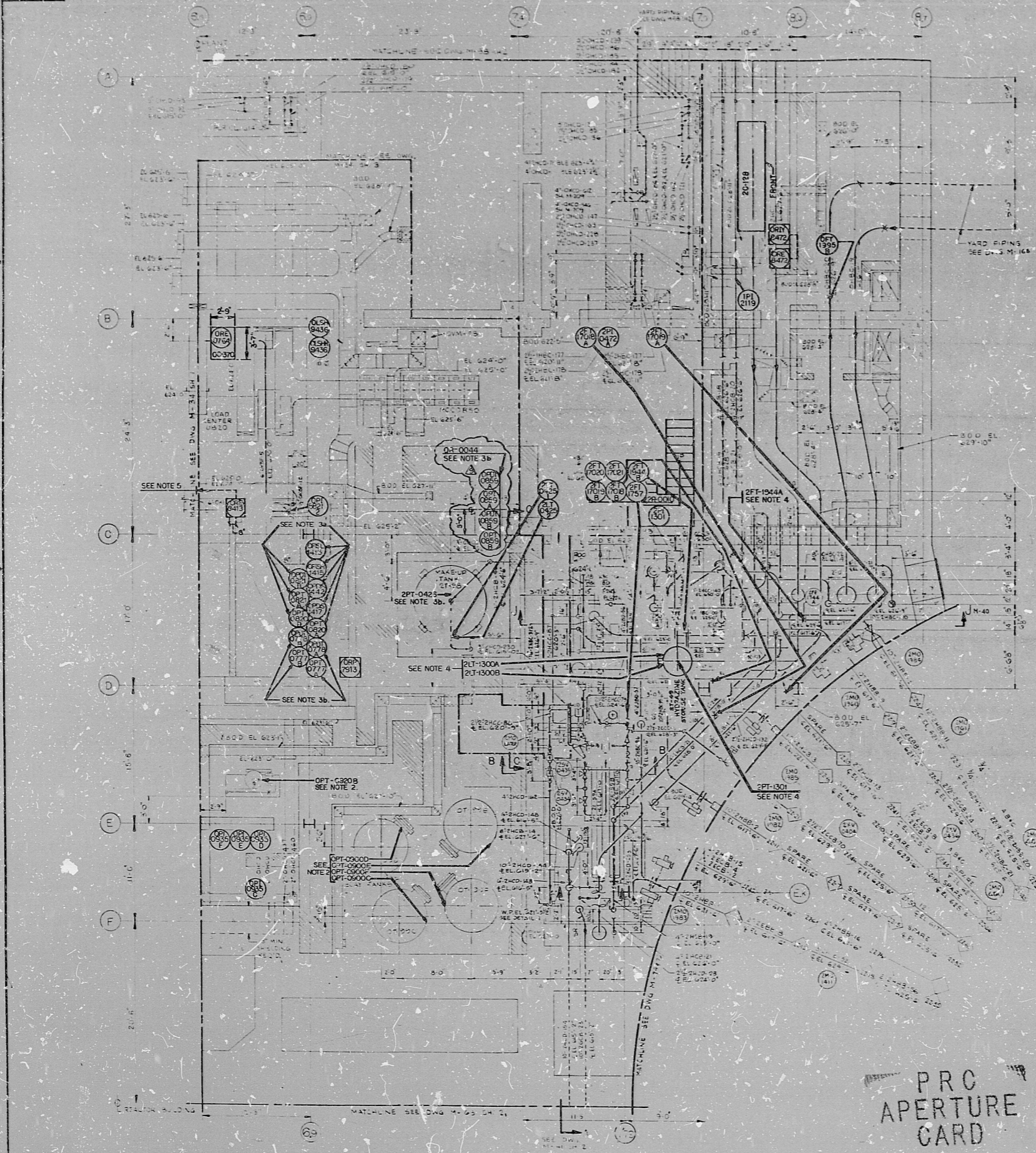


J-3107(C)



SYSTEM STATUS LOG

SYSTEM	NO.	ISSUED	REV.	DATE
FIRE PROTECTION SYSTEM	M-626-3	3	5	76
PLANT HEATING SYSTEM	M-626-4	4	10	76
MAKE-UP AND PURIFICATION SYSTEM	M-626-5	5	11	76
COMPONENT COOLING WATER SYSTEM	M-626-6	6	10	76
SERVICE WATER SYSTEM	M-626-7	7	2	77
BORON RECOVERY SYSTEM	M-626-8	8	2	77
LIQUID WASTE SYSTEM	M-626-9	9	2	77
FUEL POOL COOLING SYSTEM	M-626-10	10	2	77
BORON WATER & CHEMICAL SUPPLY SYSTEM	M-626-11	11	3	77
PLANT WATER STORAGE & TRANSFER SYSTEM	M-626-12	12	3	77
REACTOR CHEMICAL ADDITION SYSTEM	M-626-13	13	7	76
CHILLED WATER SYS. SAFETY GUARDS EQUIPMENT	M-626-14	14	13	76
DEMINERALIZED WATER SYS.	M-626-15	15	11	76

DRG REVISION NO. 15
 STARTUP SYSTEMS OR AREAS TO BE
 SHOWN ON DRAWING TO BE COMPLETED
 OVER & AFFECTED BY CHANGES
 DATE: 11/13/76
 BY: [Signature]
 CHECKED: [Signature]

- INSTRUMENT LOCATION DRAWING NOTES:**
- SEE DWG 7220-J-3107(C) FOR ALL GENERAL NOTES.
 - THESE ARE TAP LOCATIONS ONLY REFER TO DWG J-3107(C) FOR INSTRUMENT LOCATION.
 - TAP LOCATIONS FOR THESE INSTRUMENTS ARE SHOWN ON:
 a) J-3107(C)
 b) J-3107(D)
 - TAP LOCATION ONLY, FOR INSTRUMENT LOCATION SEE DWG J-3105.
 - SIGNAL TO ORIF-B413. FOR "RTY" LOCATION SEE DWG 7220-J-3105.

NO.	DATE	DESCRIPTION	BY	CHKD
1	11/13/76	REVISED AND INCORPORATED FCN J-772	[Signature]	[Signature]
2	11/13/76	REVISED AS INDICATED	[Signature]	[Signature]
3	11/13/76	REVISED AS INDICATED	[Signature]	[Signature]
4	11/13/76	INCORPORATED FCN J-1458	[Signature]	[Signature]
5	11/13/76	INCORPORATED IDCN # 3189 AND FCN J-1572	[Signature]	[Signature]
6	11/13/76	INCORPORATED FCN'S J-502 & J-503, FCN'S J-288, FCN'S J-289 & J-290	[Signature]	[Signature]
7	11/13/76	ISSUED FOR CONSTRUCTION	[Signature]	[Signature]

BECHTEL
 389 KESSLER, BIRMINGHAM

MIDLAND PLANT UNITS 1 & 2
CONSUMERS POWER COMPANY

INSTRUMENT LOCATION DRAWING
AREA 1
PLAN OF EL 614'-0"

JOB NO.	DRAWING NO.	REV.
7220	J-3107 (C)	9

PRC
 APERTURE
 CARD

THIS DRAWING REPRODUCED FROM 7220-M-34 SH 2(C) REV 11
 USE THIS DRAWING FOR INSTRUMENT LOCATION ONLY.
 FOR ALL OTHER DATA REFER TO APPLICABLE DRAWINGS.

11
 8.5"
 8.5"
 11"
 17"

17"
 11
 8.5"
 8.5"
 11"
 17"

RIDS

8302040415

