

17"

17"

11"

11"

8.5"

8.5"

8.5"

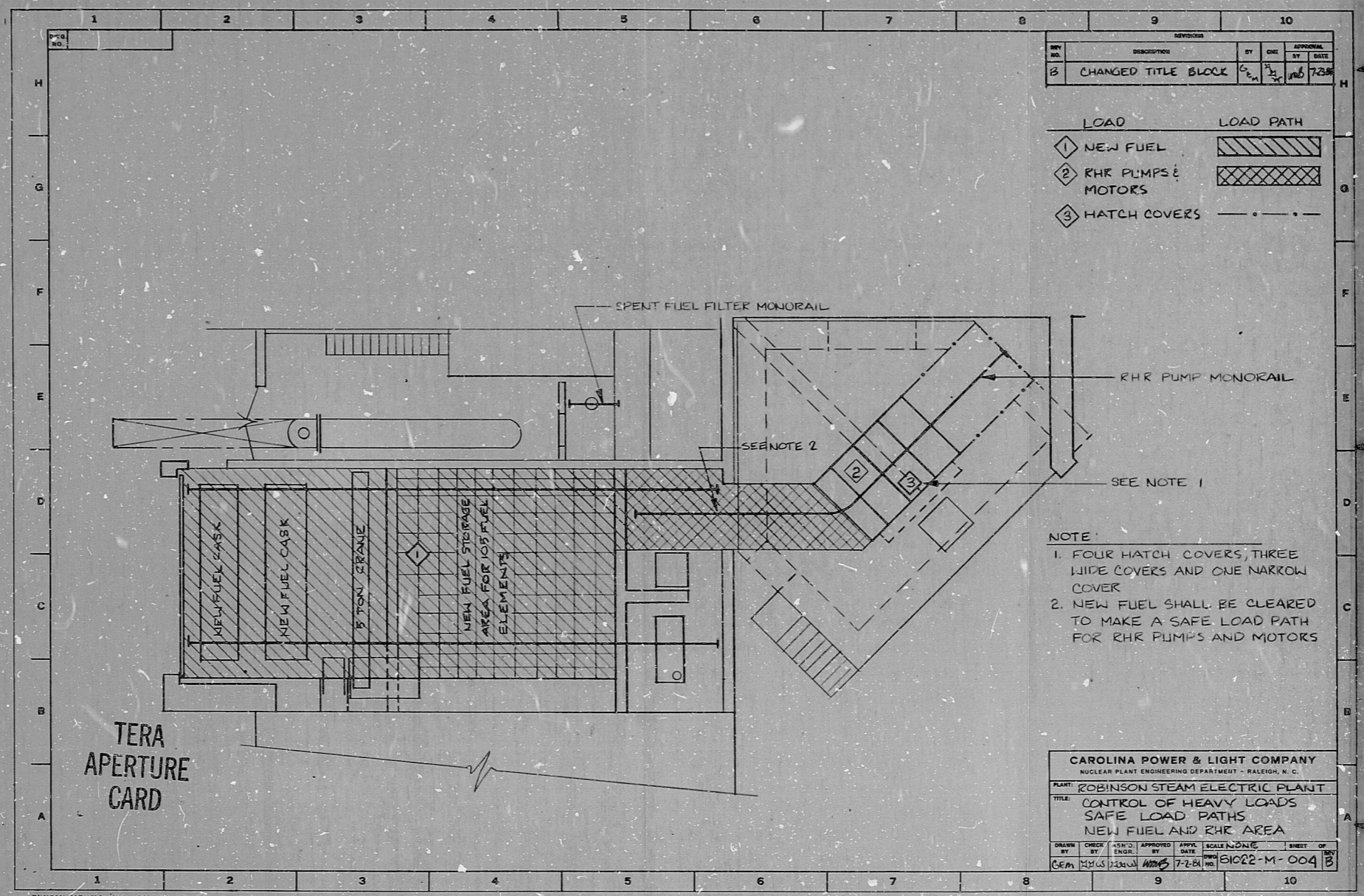
8.5"

11"

11"

17"

17"



REV	DESCRIPTION	BY	CHK	APPROVAL	DATE
3	CHANGED TITLE BLOCK	C. H.	J. C.	NO. 7238	

LOAD	LOAD PATH
1 NEW FUEL	[Diagonal Hatching]
2 RHR PUMPS & MOTORS	[Cross-hatching]
3 HATCH COVERS	[Dotted Line]

NOTE:
 1. FOUR HATCH COVERS, THREE WIDE COVERS AND ONE NARROW COVER
 2. NEW FUEL SHALL BE CLEARED TO MAKE A SAFE LOAD PATH FOR RHR PUMPS AND MOTORS

CAROLINA POWER & LIGHT COMPANY NUCLEAR PLANT ENGINEERING DEPARTMENT - RALEIGH, N. C.					
PLANT: ROBINSON STEAM ELECTRIC PLANT					
TITLE: CONTROL OF HEAVY LOADS SAFE LOAD PATHS NEW FUEL AND RHR AREA					
DRAWN BY	CHECK BY	ENGR.	APPROVED BY	SCALE	SHEET OF
Cem	HWS	JSLW	MS	17-Z-84	81022-M-004

8108170295

RIDS

81 08170295

